

HUNTERS®

HERE TO GET *you* THERE

1 Eleanor Close, Bradford, West Yorkshire, BD10 0TZ

Asking Price £425,000

Property Images



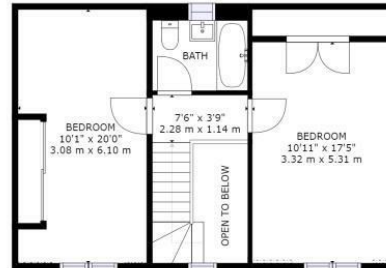
HUNTERS®

HERE TO GET *you* THERE

Property Images



Floorplan



FLOOR 3



FLOOR 1




FLOOR 2

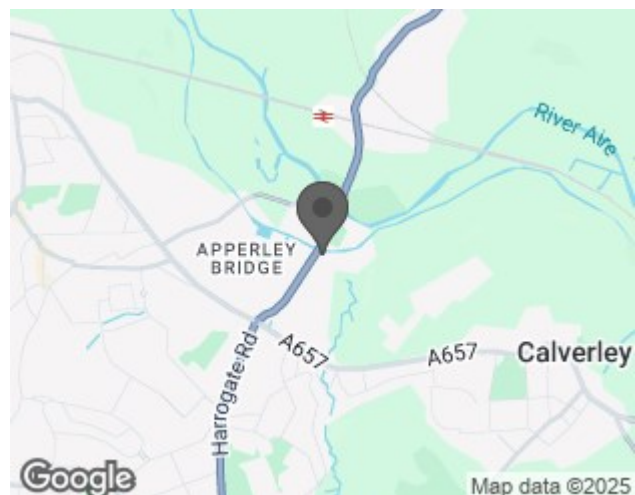
GROSS INTERNAL AREA
 FLOOR 1: 378 sq. ft, 35 m², FLOOR 2: 578 sq. ft, 54 m²
 FLOOR 3: 540 sq. ft, 50 m², EXCLUDED AREAS:
 GARAGE: 201 sq. ft, 19 m², REDUCED HEADROOM BELOW 1.5M: 1 sq. ft, 0 m²
 TOTAL: 1496 sq. ft, 139 m²
SIZES AND DIMENSIONS ARE APPROXIMATE, ACTUAL MAY VARY.



EPC

Energy Efficiency Rating		
	Current	Potential
Very energy efficient - lower running costs		
(92 plus) A	85	85
(81-91) B		
(69-80) C		
(55-68) D		
(39-54) E		
(21-38) F		
(1-20) G		
Not energy efficient - higher running costs		
England & Wales		
EU Directive 2002/91/EC		

Map



Details

Type: House - Detached Beds: 4 Bathrooms: 3 Receptions: 2
 Tenure: Freehold

****HUNTERS 360 VIRTUAL TOUR****

Backing directly onto the Leeds - Liverpool Canal and with close proximity to Woodhouse Grove school and Apperley Bridge train station this exceptional and substantial family home boasts an enviable position.

Features

- MODERN DETACHED FAMILY HOME OVER THREE FLOORS • MASTER BEDROOM WITH ENSUITE AND JULIET STYLE BALCONY • CLOSE TO HIGHLY REGARDED SCHOOLS AND TRAIN STATION • LANDSCAPED GARDENS TO REAR AND SIDE • OPEN PLAN KITCHEN / DINER WITH BI FOLD DOORS • UTILITY ROOM AND GUEST WC • BACKING ONTO THE CANAL • EPC RATING - B