

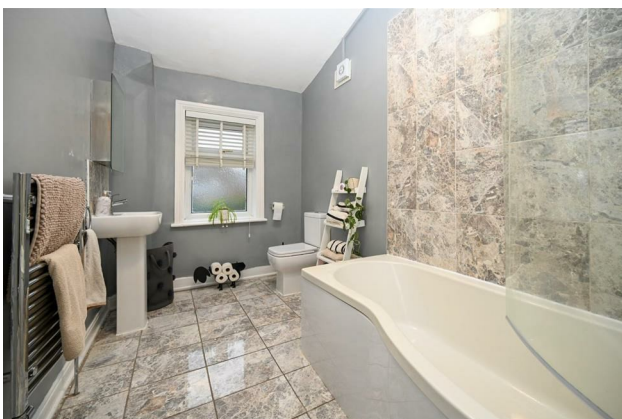
# HUNTERS®

HERE TO GET *you* THERE

**28 Ashgrove, Greengates, Bradford, BD10 0BP**

**Asking Price £190,000**

**Property Images**



# HUNTERS<sup>®</sup>

HERE TO GET *you* THERE

## Property Images



# HUNTERS<sup>®</sup>

HERE TO GET *you* THERE

Property Images



# HUNTERS®

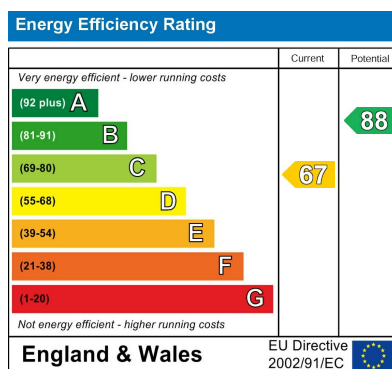
HERE TO GET *you* THERE



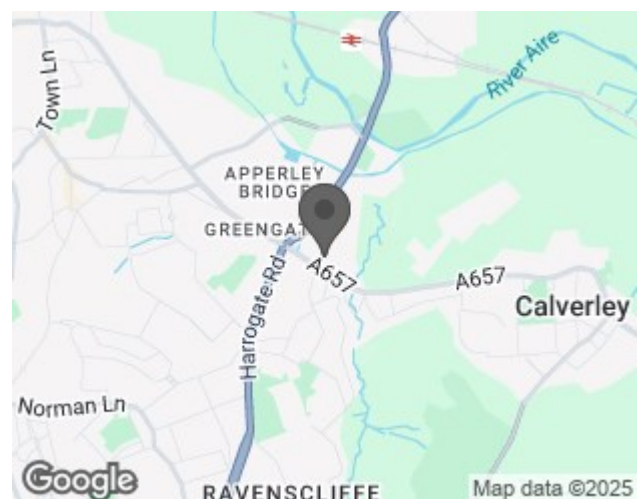
GROSS INTERNAL AREA  
FLOOR 1: 16.03 m², FLOOR 2: 40.08 m², FLOOR 3: 39.77 m²  
TOTAL: 95.88 m²

Matterport

## EPC



## Map



## Details

Type: House - Terraced Beds: 2 Bathrooms: 1 Reception: 1 Tenure: Freehold

## Summary

This spacious two-bedroom stone terraced home has been beautifully modernised and is ready to move into. Situated in a sought-after location, it's just a short walk from Apperley Bridge Train Station, offering excellent transport links to Leeds and Bradford. The property is ideal for first-time buyers, professionals, downsizers, or landlords, combining charm and practicality throughout.

The ground floor features a welcoming lounge, perfect for relaxing or entertaining, and a large dining kitchen with solid wood worktops. The kitchen has been thoughtfully updated to provide modern convenience while maintaining timeless appeal.

A useful cellar on the lower ground floor offers additional storage space, ideal for household essentials or hobbies.

Upstairs, there are two generously sized double bedrooms, each retaining charming period details such as cast iron fireplaces, adding character and warmth to the space. The modern house bathroom includes a luxurious 'P' shaped bath with a rainfall-style shower and a handheld attachment, offering a relaxing and contemporary feel.

To the rear of the property, a fully enclosed, low-maintenance garden includes a combination of pebbled and Yorkshire stone-flagged patio areas. This space is perfect for outdoor dining, relaxing, or providing a safe area for children and pets. On-street parking is available to the front of the house for added convenience.

This delightful home is sure to be popular. Arrange a viewing today to avoid missing out on this fantastic opportunity.

## Features

- LARGER STYLE TWO BED STONE TERRACE • USEFUL CELLAR • OPEN PLAN DINING KITCHEN • TASTFULLY DECORATED • TWO LARGE DOUBLE BEDROOMS • ENCLOSED GARDEN TO REAR • CLOSE TO TRAIN STATION AND AMENITIES • NO ONWARD CHAIN • IDEAL FOR FIRST TIME BUYER OR BUY TO LET INVESTOR • HUNTERS 360 TOUR