

HUNTERS®

HERE TO GET *you* THERE

3-4 Gladstone Road, Rawdon, Leeds, LS19 6HZ

Offers In The Region Of £349,950

Property Images



HUNTERS®

HERE TO GET *you* THERE

Property Images



HUNTERS[®]

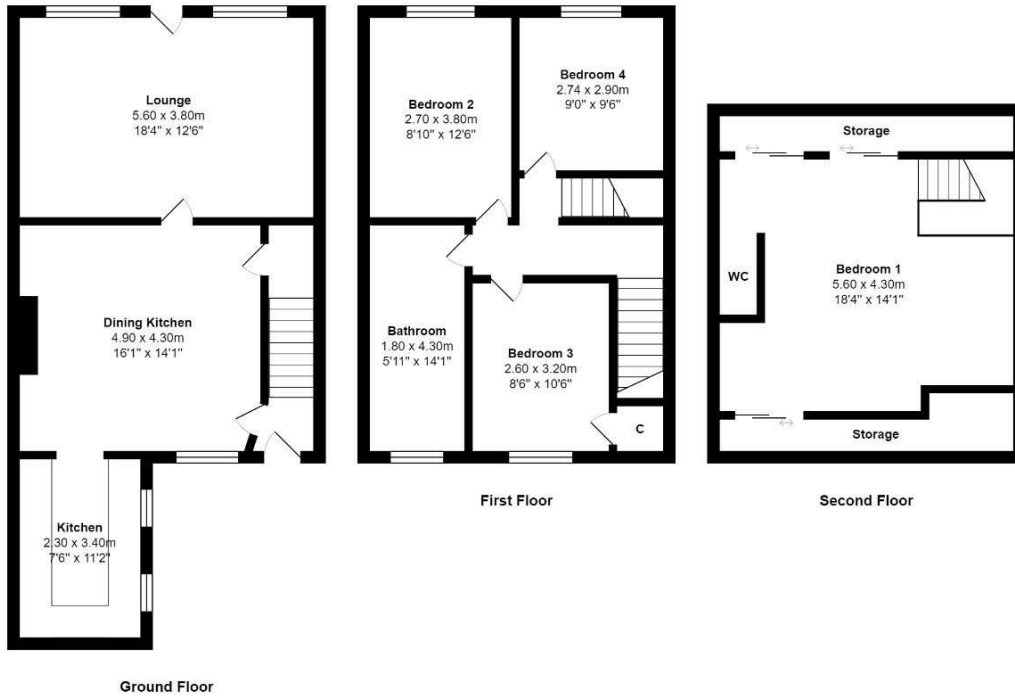
HERE TO GET *you* THERE

Property Images



HUNTERS®

HERE TO GET *you* THERE



Total Area: 143.5 m² ... 1544 ft²

All measurements are approximate and for display purposes only

EPC

Energy Efficiency Rating		Current	Potential
<i>Very energy efficient - lower running costs</i>			
(92 plus) A			82
(81-91) B			
(69-80) C			
(55-68) D		58	
(39-54) E			
(21-38) F			
(1-20) G			
<i>Not energy efficient - higher running costs</i>			
England & Wales		EU Directive 2002/91/EC	

Map



Details

Type: House - Terraced Beds: 4 Bathrooms: 2 Receptions: 2 Tenure: Freehold

Summary

Nestled in a picturesque village setting, this stunning four-bedroom stone terraced cottage is a true masterpiece, seamlessly blending modern elegance with timeless character features. As you step inside, you're greeted by a spacious and inviting atmosphere, enhanced by the harmonious fusion of contemporary design and traditional charm.

The ground floor boasts a delightful dining kitchen, adorned with a striking stone fireplace and sleek white high gloss fitted units, creating a perfect space for culinary delights. The adjacent lounge is generously sized, featuring exposed beams and a rustic fireplace, exuding warmth and sophistication.

Ascending the staircase, you'll discover three generously proportioned bedrooms, all tastefully decorated, along with a luxurious four-piece bathroom, offering a sanctuary of relaxation. The master bedroom on the second floor is a true retreat, complete with ample storage and a convenient ensuite facility.

Outside, the enchanting garden provides a serene oasis, ideal for alfresco dining and family gatherings. The property also offers the convenience of off-street and permit parking.

Perfectly located for commuters, this home offers easy access to Leeds, Bradford, Harrogate, and York, as well as nearby amenities in Horsforth, Yeadon, and Guiseley. Don't miss the opportunity to make this enchanting cottage your forever home – a place where modern living meets classic charm. Schedule a viewing today and step into the lifestyle you've always dreamed of. EPC - D

Features

- FOUR BEDROOM STONE COTTAGE • OVER THREE FLOORS PLUS CELLAR • SOUGHT AFTER LOCATION • CHARMING, PERIOD FEATURES THROUGHOUT • STUNNING KITCHEN • ENCLOSED GARDEN TO REAR • OFF-STREET PARKING • HUNTERS 360 TOUR • ENSUITE TO MASTER