

HUNTERS®

HERE TO GET *you* THERE

13 Westfield Mount, Yeadon, Leeds, LS19 7NL

Asking Price £249,950

Property Images



HUNTERS®

HERE TO GET *you* THERE

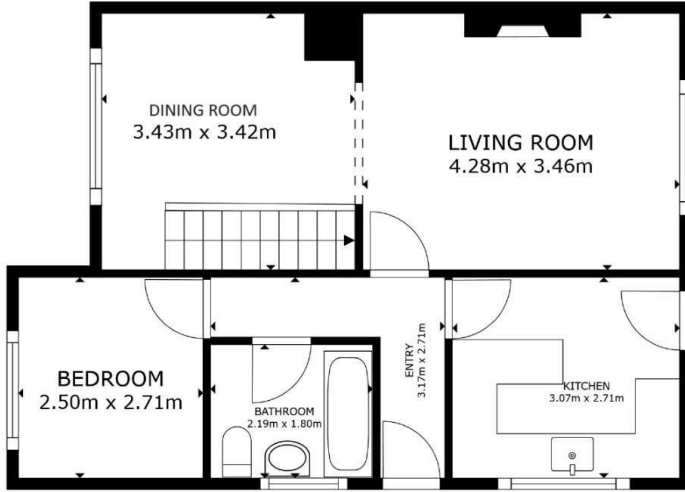
Property Images



HUNTERS[®]

HERE TO GET *you* THERE

Property Images



FLOOR 1



FLOOR 2

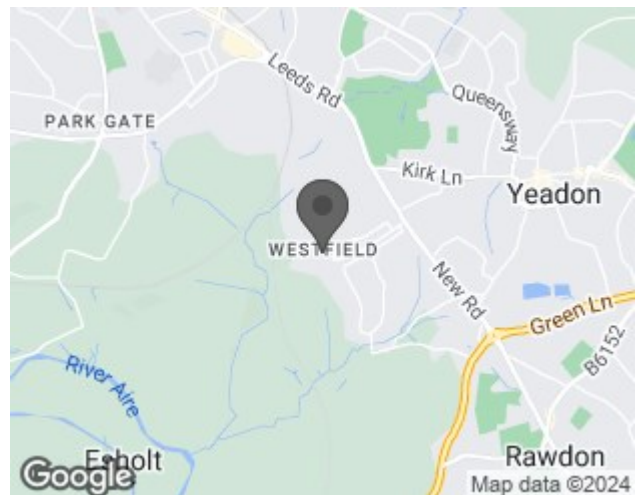
GROSS INTERNAL AREA
 FLOOR 1 52.0 m² FLOOR 2 28.0 m²
 TOTAL : 80.1 m²
SIZES AND DIMENSIONS ARE APPROXIMATE, ACTUAL MAY VARY.



EPC

Energy Efficiency Rating		Current	Potential
<i>Very energy efficient - lower running costs</i>			
(92 plus) A			
(81-91) B			80
(69-80) C			
(55-68) D		57	
(39-54) E			
(21-38) F			
(1-20) G			
<i>Not energy efficient - higher running costs</i>			
England & Wales		EU Directive 2002/91/EC	

Map



Details

Type: Bungalow - Semi Detached Beds: 3 Bathrooms: 2 Receptions: 2 Tenure: Freehold

Summary

Introducing this charming three-bedroom semi-detached dormer bungalow, offered to the market with no onward chain. This property presents an excellent opportunity for those looking to put their own stamp on a home, as it is in need of refurbishment. With spacious and versatile accommodation throughout, it offers the perfect canvas to create a personalized living space.

Upon entering, you are welcomed by an entrance hall that leads to a functional kitchen and a generously sized open plan lounge and dining room, ideal for family gatherings and entertaining. The ground floor also features a convenient bedroom and a well-proportioned bathroom.

Moving to the first floor, you will find two additional bedrooms, both offering ample space and natural light, along with a shower room to complete the accommodation.

Externally, the property boasts gardens to both the front and rear, providing outdoor space for relaxation and potential landscaping. A driveway to the side offers off-road parking and leads to a detached garage, perfect for additional storage or workshop space.

Situated in a desirable location, the bungalow is close to local shops, amenities, and public transport routes, ensuring convenience and ease of access to everything you need.

This property is a fantastic opportunity for buyers looking to refurbish and create a home tailored to their own taste. Early viewing is highly recommended to fully appreciate the potential on offer.

Features

- DORMER BUNGALOW • IN NEED OF UPDATING • GARAGE AND DRIVE • SOUGHT AFTER LOCATION • NO ONWARD CHAIN • HUNTERS 360 TOUR • CLOSE TO SHOPS AND AMENITIES