

HUNTERS®

HERE TO GET *you* THERE

3 Woodville Crescent, Horsforth, Leeds, LS18 5DQ

Price £179,950

Property Images



HUNTERS[®]

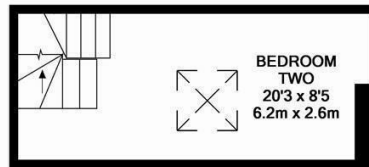
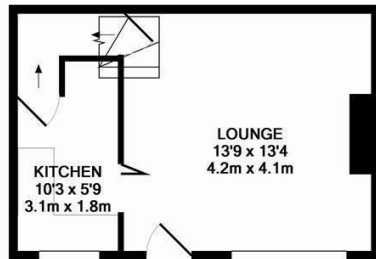
HERE TO GET *you* THERE

Property Images

HUNTERS®

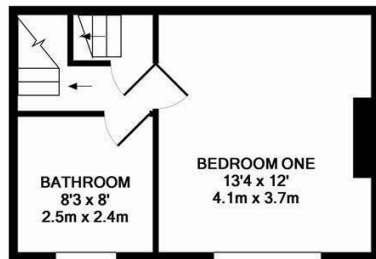
HERE TO GET *you* THERE

Floorplan



2ND FLOOR
APPROX. FLOOR
AREA 162 SQ.FT.
(15.0 SQ.M.)

GROUND FLOOR
APPROX. FLOOR
AREA 260 SQ.FT.
(24.1 SQ.M.)



1ST FLOOR
APPROX. FLOOR
AREA 261 SQ.FT.
(24.2 SQ.M.)

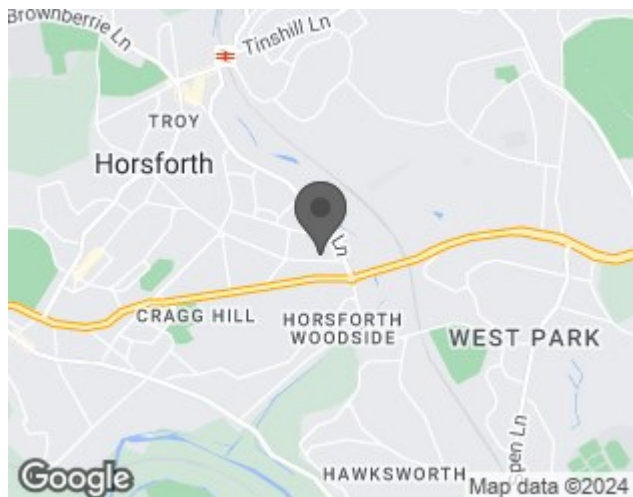
TOTAL APPROX. FLOOR AREA 683 SQ.FT. (63.4 SQ.M.)

Whilst every attempt has been made to ensure the accuracy of the floor plan contained here, measurements of doors, windows, rooms and any other items are approximate and no responsibility is taken for any error, omission, or mis-statement. This plan is for illustrative purposes only and should be used as such by any prospective purchaser. The services, systems and appliances shown have not been tested and no guarantee as to their operability or efficiency can be given.
Made with Metropix ©2016

EPC

Energy Efficiency Rating		Current	Potential
<i>Very energy efficient - lower running costs</i>			
(92 plus) A			85
(81-91) B			
(69-80) C			
(55-68) D		54	
(39-54) E			
(21-38) F			
(1-20) G			
<i>Not energy efficient - higher running costs</i>			
England & Wales		EU Directive 2002/91/EC	

Map



Details

Type: House - Terraced Beds: 2 Bathrooms: 1 Receptions: 1 Tenure: Freehold

Summary

Charming Two-Bedroom Brick Terrace in Prime Horsforth Location

Nestled in the heart of Horsforth, this charming two-bedroom mid-terrace house offers an exceptional blend of character and modern convenience. Perfectly situated close to an array of local amenities, this home is ideal for those seeking both comfort and accessibility.

Key Features:

Modern Kitchen: The sleek, contemporary kitchen is equipped with a range of high-quality appliances, ensuring an effortless cooking experience. Additional storage is provided by a convenient cellar, accessible directly from the kitchen.

Spacious Lounge: The inviting lounge area boasts beautiful exposed floorboards and a striking fire surround with a gas fire, creating a warm and welcoming atmosphere.

Features

• MODERN KITCHEN • FRONT YARD • NO ONWARD CHAIN • TWO BEDROOMS • IDEAL BUY TO LET INVESTMENT • CLOSE TO AMENITIES • CELLAR