

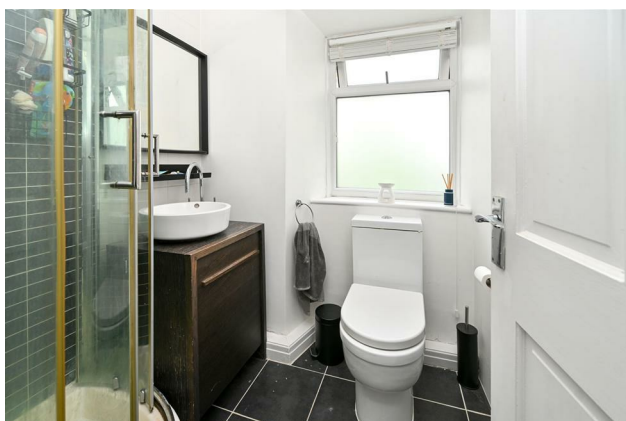
HUNTERS®

HERE TO GET *you* THERE

2 St. Wilfrids Terrace, Pool In Wharfedale, LS21 1NA

Price £199,950

Property Images



HUNTERS[®]

HERE TO GET *you* THERE

Property Images



HUNTERS[®]

HERE TO GET *you* THERE

Property Images

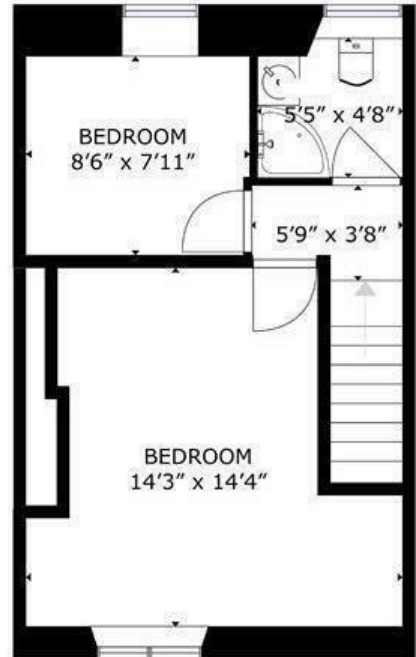
HUNTERS®

HERE TO GET *you* THERE



GROUND FLOOR

SIZES AND DIMENSIONS ARE APPROXIMATE, ACTUAL MAY VARY



FIRST FLOOR

SIZES AND DIMENSIONS ARE APPROXIMATE, ACTUAL MAY VARY

EPC

Energy Efficiency Rating		Current	Potential
<i>Very energy efficient - lower running costs</i>			
(92 plus) A			90
(81-91) B			
(69-80) C		71	
(55-68) D			
(39-54) E			
(21-38) F			
(1-20) G			
<i>Not energy efficient - higher running costs</i>			
England & Wales	EU Directive 2002/91/EC		

Map



Details

Type: House - Terraced Beds: 2 Bathrooms: 1 Receptions: 1 Tenure: Freehold

Summary

A charming two bedroom terraced cottage, located within the popular village of Pool in Wharfedale. Well presented throughout. Briefly the accommodation comprises, entrance porch, lounge and a kitchen breakfast room to the ground floor. To the first floor there is a double bedroom, single bedroom and a bathroom. Externally the property has a garden to the rear ideal for outside relaxation. EPC Rating C.

Located in the heart of Pool In Wharfedale with easy access to the post office, village pubs, church, and additional village amenities available locally with further amenities and schooling available throughout the area in neighbouring Otley, Ilkley and Guiseley. Leeds Bradford Airport is a short drive away and there is also a regular bus service as well as the nearby Weeton railway station. The towns of Leeds and Harrogate are within easy reach and the property is ideally located for access to the A1/M1.

Features

- CHARACTER STONE COTTAGE • GARDEN AND PARKING TO REAR • SOUGHT AFTER LOCATION • DINING KITCHEN • NO ONWARD CHAIN • CLOSE TO SHOPS AND AMENITIES • IDEAL FIRST TIME BUYER PROPERTY