

HUNTERS®

HERE TO GET *you* THERE

20 Edison Way, Guiseley, Leeds, LS20 9PX

Offers In The Region Of £324,950

Property Images



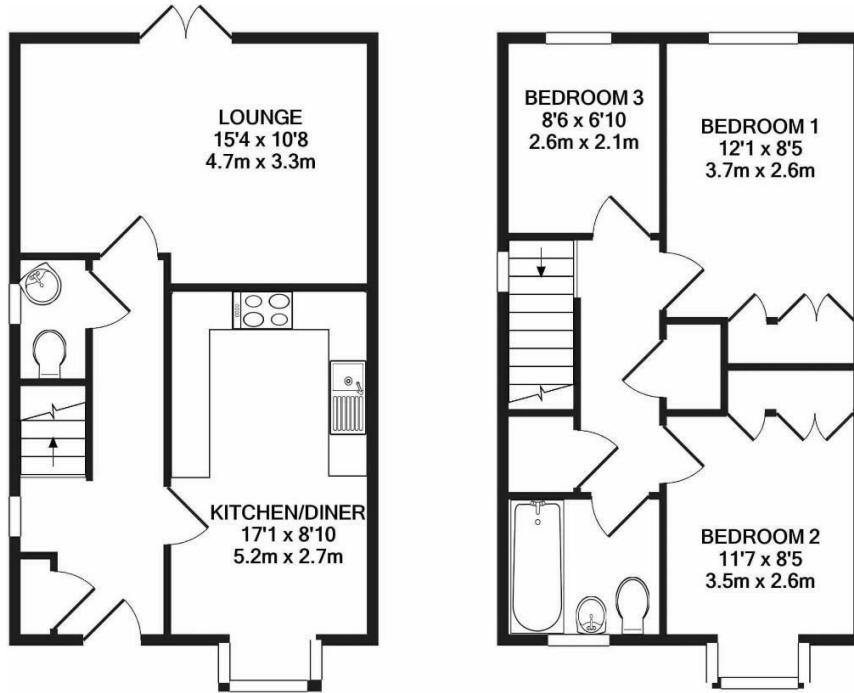
HUNTERS[®]

HERE TO GET *you* THERE

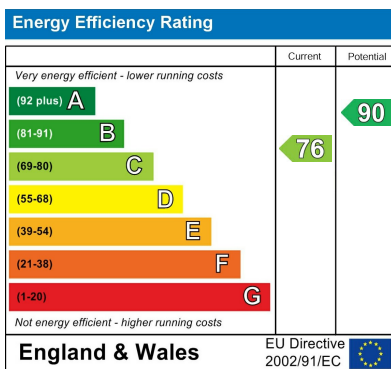
Property Images



Floorplan



EPC



Map



Details

Type: House - Semi-Detached Beds: 3 Bathrooms: 1 Receptions: 2 Tenure: Freehold

Summary

Welcome to this exceptional modern townhouse nestled within a tranquil cul-de-sac in a sought-after development near Guiseley train station. Boasting a chic neutral décor throughout, spacious rooms, and a serene enclosed garden at the rear, this property offers the perfect blend of comfort and contemporary living.

Ideal for families, this home is conveniently located within easy reach of esteemed schools, a charming play park, and scenic walking trails, with lush grasslands just a stone's throw away.

Step inside to discover the ground floor's inviting layout, featuring an entrance hallway adorned with a sleek composite entrance door. The modern dining kitchen beckons with its functional design, while a convenient cloakroom/WC offers practicality. The lounge, illuminated by natural light, welcomes relaxation and entertainment, with French doors seamlessly connecting to the rear garden, extending your living space outdoors.

Ascending to the first floor, you'll find two generously sized double bedrooms alongside a third bedroom boasting built-in wardrobes, currently utilized as a dressing room. Completing this

Features

• HIGHLY DESIRABLE LOCATION • MODERN THROUGHOUT • CLOSE TO TRAIN STATION • LARGE GARDEN TO REAR • DINING KITCHEN • IDEAL FAMILY HOME • CLOSE TO SCHOOLS AND AMENITIES • OFF-STREET PARKING FOR AT LEAST TWO CARS • EPC RATING = C • IMMACULATELY PRESENTED