

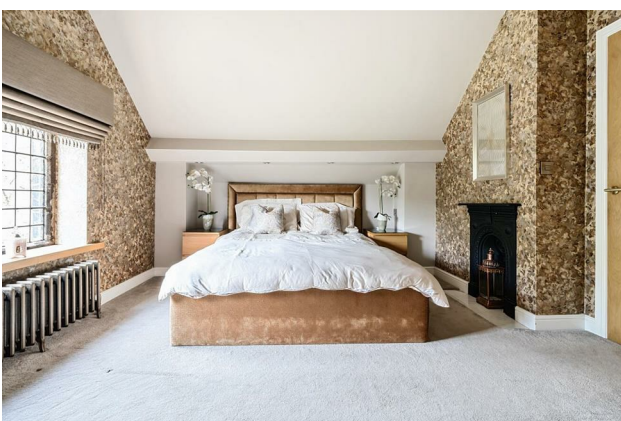
HUNTERS®

HERE TO GET *you* THERE

Roundwood Grange Roundwood Road, Baildon, BD17 7JX

Guide Price £1,200,000

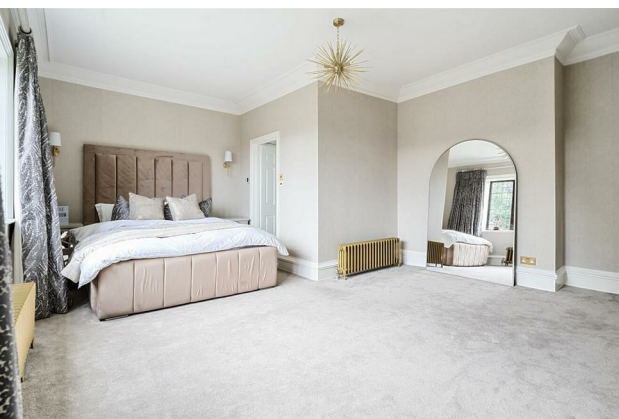
Property Images



HUNTERS®

HERE TO GET *you* THERE

Property Images



Floorplan

Roundwood Grange, Roundwood Road, Baildon, Shipley, BD17

Approximate Area = 4648 sq ft / 431.8 sq m (excludes store)

Garage = 766 sq ft / 71.1 sq m

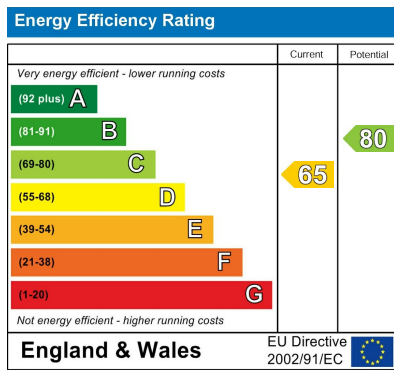
Total = 5414 sq ft / 502.9 sq m

For identification only - Not to scale

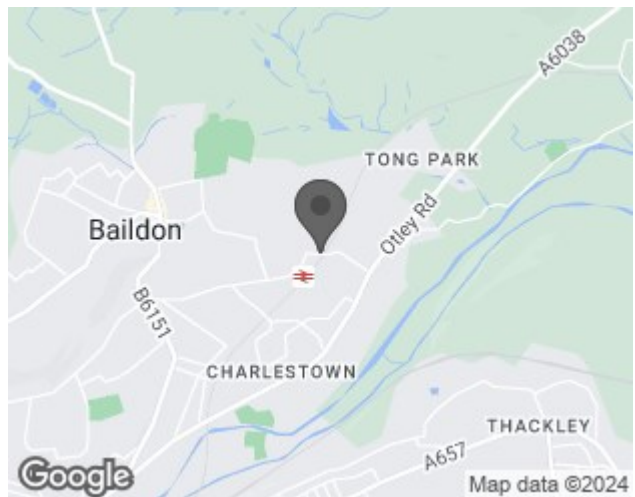


Floor plan produced in accordance with RICS Property Measurement Standards incorporating International Property Measurement Standards (IPMS2 Residential). © nichecom 2024. Produced for Hunters Property Group. REF: 1102864

EPC



Map



Details

Type: House - Detached Beds: 6 Bathrooms: 4 Receptions: 5 Tenure: Freehold

Summary

Roundwood Grange presents a rare opportunity to own a substantial period home of unparalleled beauty and elegance. With its perfect blend of traditional charm, modern amenities, and idyllic surroundings, this magnificent residence offers a lifestyle of luxury and refinement for discerning homeowners seeking the ultimate retreat in the heart of Baildon.

Features

• STUNNING PERIOD PROPERTY • ARGUBLY THE FINEST HOUSE IN BAILDON • SYMPATHETICALLY RESTORED AND UPGRADED • EXTENSIVE GROUNDS AND GARDENS ACCESSED VIA REMOTE CONTROLLED GATES • CHARACTER FEATURES THROUGHOUT • CLOSE TO TRAIN STATION AND LOCAL AMENITIES • GRAND RECEPTION HALL • MASTER SUITE • PARKING FOR MULTIPLE VEHICLES