

HUNTERS®

HERE TO GET *you* THERE

2 Town Street, Rawdon, Leeds, LS19 6PU

Offers In The Region Of £324,950

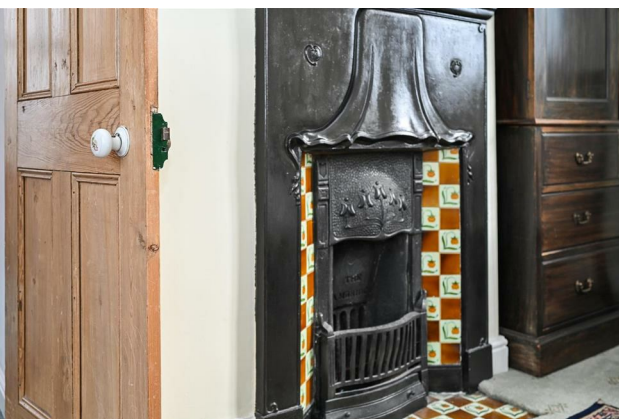
Property Images



HUNTERS®

HERE TO GET *you* THERE

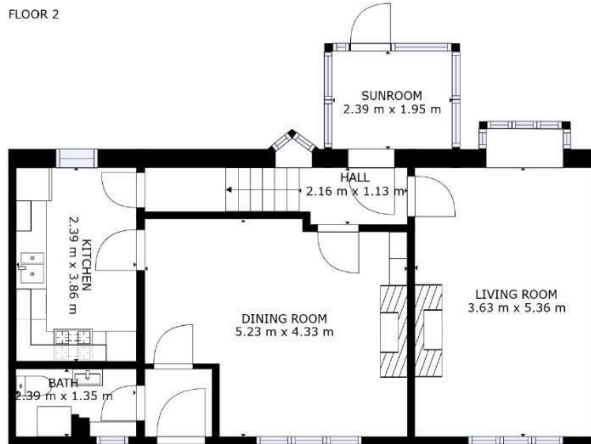
Property Images



Floorplan



FLOOR 2



FLOOR 1

TOTAL: 119 m²
FLOOR 1: 68 m², FLOOR 2: 51 m²
SIZES AND DIMENSIONS ARE APPROXIMATE, ACTUAL MAY VARY.



EPC

Energy Efficiency Rating		Current	Potential
<i>Very energy efficient - lower running costs</i>			
(92 plus) A			
(81-91) B			
(69-80) C			
(55-68) D		55	
(39-54) E			
(21-38) F			
(1-20) G			
<i>Not energy efficient - higher running costs</i>			
England & Wales		EU Directive 2002/91/EC	

Map



Details

Type: House - Terraced Beds: 3 Bathrooms: 1 Receptions: 2 Tenure: Freehold

Summary

Welcome to this delightful and traditional three-bedroom stone terraced property nestled in the heart of Rawdon Village. Brimming with character and charm, this substantial home boasts a host of appealing features and is adorned with a modern neutral theme throughout.

The fitted kitchen is a focal point, featuring 'cream shaker' units, complemented by 'beech' work surfaces, and accompanied by a separate utility room for added convenience. The property boasts two generously sized reception rooms, each offering a unique ambiance.

The large family/dining room is adorned with an attractive 'oak' fireplace, complete with an open grate and ceramic back and hearth, providing a warm and inviting focal point. Meanwhile, the spacious lounge showcases a feature living flame 'coal effect' gas stove, perfect for cozy evenings.

Upstairs, three good-sized bedrooms await, each adorned with feature 'cast iron' fireplaces and offering pleasant views to the rear of the property. The bathroom is fitted with a traditional

Features

• SOUGHT AFTER RAWDON LOCATION • PERIOD FEATURES THROUGHOUT • GARDEN WITH SOUTHERLEY ASEPCT • FAR REACHING VIEWS TO REAR • NO ONWARD CHAIN • HARD WOOD FLOORS, FITTED CUPBOARDS TO ALCOVES AND FEATURE FIREPLACE • HUNTERS 360 TOUR • OCCASIONAL PARKING TO REAR