

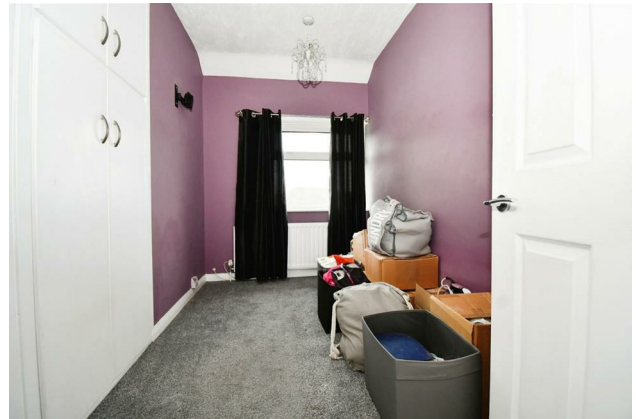
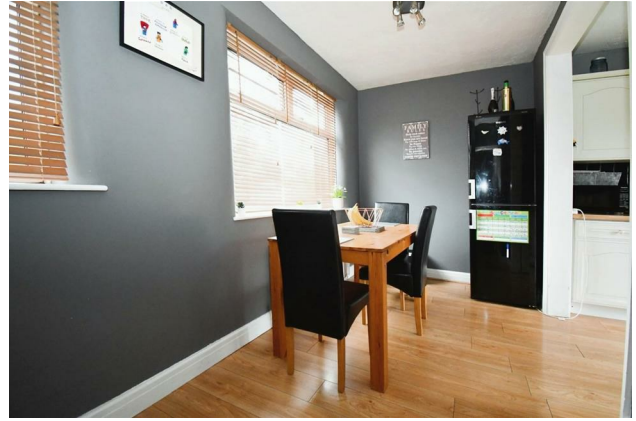
# HUNTERS®

HERE TO GET *you* THERE

**36 Markham Crescent, Rawdon, Leeds, LS19 6NG**

**Offers In The Region Of £249,950**

**Property Images**



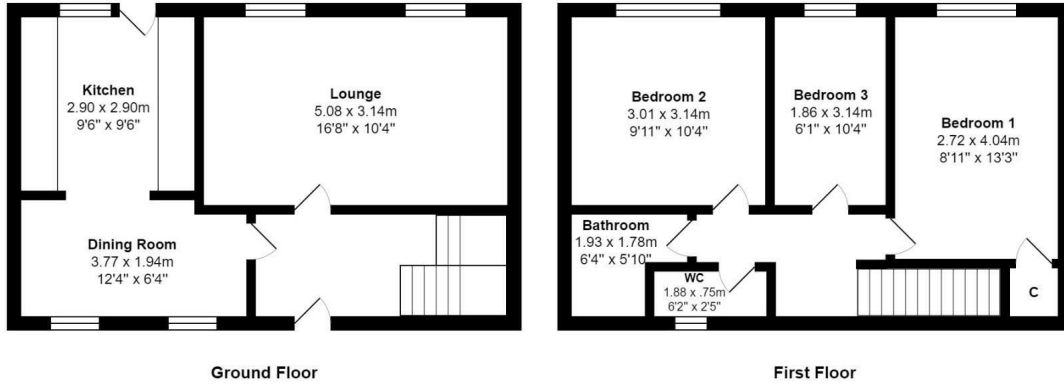
# HUNTERS®

HERE TO GET *you* THERE

## Property Images



## Floorplan



Total Area: 75.6 m<sup>2</sup> ... 814 ft<sup>2</sup>

All measurements are approximate and for display purposes only

## EPC

Energy Efficiency Rating		Current	Potential
<i>Very energy efficient - lower running costs</i>			
(92 plus) <b>A</b>			
(81-91) <b>B</b>			80
(69-80) <b>C</b>			
(55-68) <b>D</b>		52	
(39-54) <b>E</b>			
(21-38) <b>F</b>			
(1-20) <b>G</b>			
<i>Not energy efficient - higher running costs</i>			
<b>England &amp; Wales</b>	EU Directive 2002/91/EC		

## Map



## Details

Type: House - Mid Terrace Beds: 3 Bathrooms: 1 Receptions: 2

Tenure: Freehold

## Features

- SOUGHT AFTER LOCATION • MUCH LOVED FAMILY HOME • LARGE GARDEN TO REAR WITH USEFUL OUTHOUSE • THREE GOOD SIZED BEDROOMS • SCOPE TO EXTEND - SUBJECT TO PLANNING • OFF-STREET PARKING • DINING KITCHEN • CLOSE TO SCHOOLS