



Flat 7 Chatsworth Manor Ladybrook Road, Bramhall, SK7 3NB

*mosley jarman*



Flat 7 Chatsworth Manor Ladybrook Road, Bramhall, SK7 3NB

**£1,100 Per Calendar Month**

- Two double bedroom top floor apartment
- Spacious living/ dining room
- Modern kitchen
- Two bathrooms
- Garage and allocated parking
- Well presented throughout
- No onward chain
- Close to Cheadle Hulme village
- Walking distance of Bramhall Park
- EPC rating: C, Council Tax Band: D (Stockport)







Flat 7 Chatsworth Manor Ladybrook Road, Bramhall, SK7 3NB

**Per Calendar Month £1,100 Per Calendar Month**

A well presented two double bedroom top floor apartment situated in a small modern purpose built block of nine apartments in a quiet, leafy location within a short walk of Bramhall Park and Cheadle Hulme village. The property is light and spacious, close to local amenities and benefits from double glazing, gas fired central heating allocated parking and garage. The accommodation includes; communal entrance hallway, private entrance hallway (with porcelain flooring and loft access with pull down ladder- the loft is boarded with lighting), spacious living/ dining room (with large box bay window which provides pleasant views, marble flooring and built in home office), kitchen (fitted with modern matching wall and base units, granite work surfaces and space for appliances), two double bedrooms (the master benefitting from an ensuite and fitted wardrobes) and a family bathroom. Outside the property has one allocated parking space and its own garage and is situated within pleasant and well maintained communal grounds). UNFURNISHED. AVAILABLE: 12th MARCH 2025

#### IMPORTANT INFORMATION

Parking - Allocated parking space. Single garage

Heating - Gas central heating

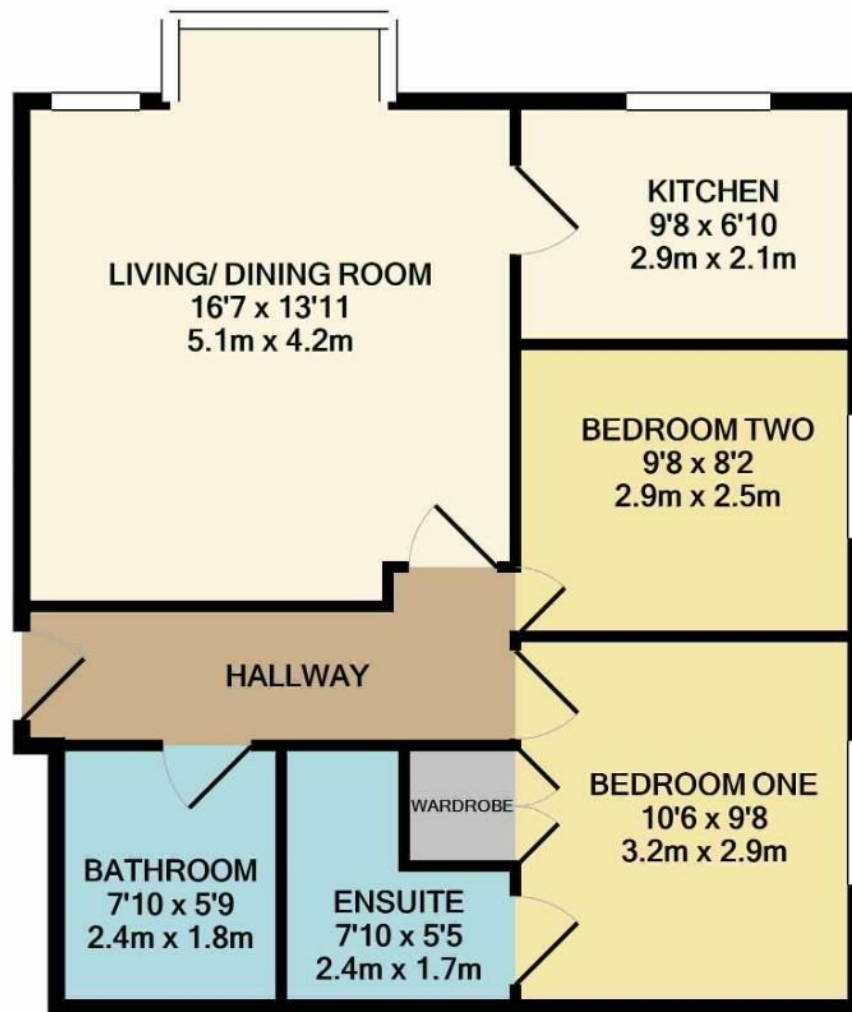
Mains - Gas, Electric and Water

Broadband providers - TBC

Mobile providers - TBC

\*Broadband and mobile providers information taken from the Ofcom mobile and broadband checker





**TOTAL APPROX. FLOOR AREA 613 SQ.FT. (56.9 SQ.M.)**

Whilst every attempt has been made to ensure the accuracy of the floor plan contained here, measurements of doors, windows, rooms and any other items are approximate and no responsibility is taken for any error, omission, or mis-statement. This plan is for illustrative purposes only and should be used as such by any prospective purchaser. The services, systems and appliances shown have not been tested and no guarantee as to their operability or efficiency can be given

Made with Metropix ©2021

226 Moss Lane, Bramhall, Cheshire, SK7 1BD  
Tel: **0161 439 5658** Email: [bramhall@mosleyjarman.co.uk](mailto:bramhall@mosleyjarman.co.uk)  
[www.mosleyjarman.co.uk](http://www.mosleyjarman.co.uk)

**PROPERTY MISDESCRIPTION ACT 1991:** The Agents has not tested any apparatus, equipment, fixtures and fittings, or services, so cannot verify that they are in working order or fit for the purpose. the buyer is advised to obtain verification from his or her Professional Buyer. References to the tenure of the proeprty are baed on information supplied by the Vendor. The agents have not had sight of the title documents. The buyer to obtain verification from their Solicitor. You are advised to check the availability of any property before travelling any distance to view.

