



Christchurch Street West, Frome

Christchurch Street West, Frome, BA11 1EB

A well-presented one-bedroom ground floor apartment is located on Christchurch Street and is within walking distance of Catherine Hill and Victoria Park. The accommodation comprises of an open plan kitchen and sitting room with a bay window, modern fitted kitchen with breakfast bar and plumbing for a washing machine. The bedroom is located to the rear and is double in size and there is a modern bathroom with p-shape shower/bath. The property is situated in an enviable location close to the independent shops, cafes and restaurants of Catherine Hill. Frome is a historic market town, just under 13 miles from Bath and surrounded by beautiful countryside. The town has many amenities, including good schools, two theatres, a cinema, and a station with rail links to Bath, Bristol and London Paddington. EPC - E, Council Tax Band - A, Services - Mains electricity, Mains water, Mains drainage.

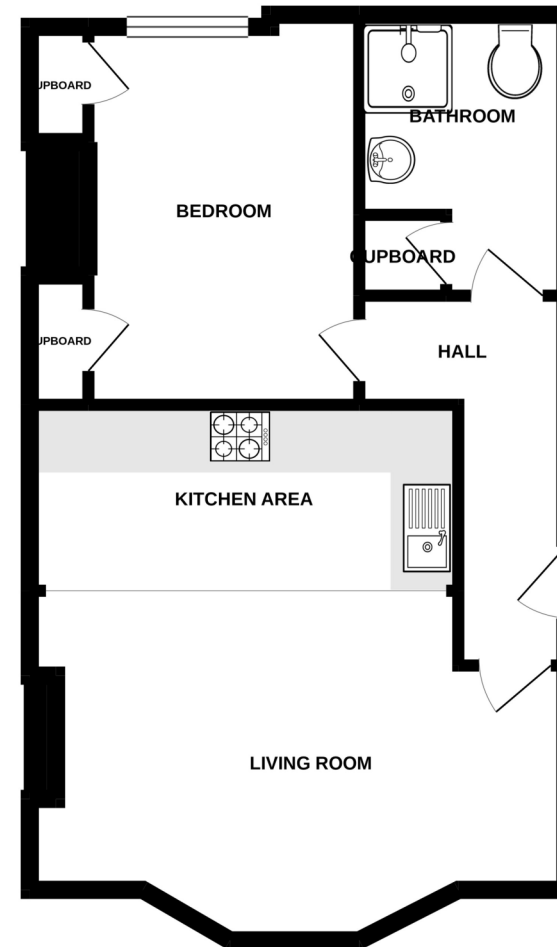
Leasehold - 976 Years Remaining. Management charge paid as and when work is required.







Score	Energy rating	Current	Potential
92+	A		
81-91	B		
69-80	C		72 C
55-68	D		
39-54	E	42 E	
21-38	F		
1-20	G		



hunter
french

3HighStreet,Corsham,WiltshireSN13 0ES
Email:corsham@hunterfrench.co.uk

19PaulStreet,Frome,Somerset,BA111DT
Email:frome@hunterfrench.co.uk

FromeOffice:01373464040 | CorshamOffice:01249715775 | AssociatedParkLane:0203688974
BathOffice:01225444454 | DevizesOffice:01380722784 | TetburyOffice:01666505068

*Bath,Devizes&TetburyareallNonGuildMemberOffices

www.hunterfrench.co.uk