



Vicarage Street, Frome

Vicarage Street, Frome, BA11 1PU

A handsome grade II listed town house located on Vicarage Street, in the heart of Frome. The property is arranged over four storeys and offers very spacious flexible accommodation with no onward chain. It has a wealth of original characterful features, including stone roof tiles and mullion windows. On the ground floor there is an entrance hall leading into a large living room with characterful beams, wooden floors and an Inglenook fireplace with a wood burner. This room then leads into the conservatory with views of the garden. The kitchen/dining room is located at the back of the house and is fitted with bespoke wooden base units and worktops. There is a butler sink, rangemaster and open shelving, with space for a dining table. One of the walls features a wooden panel from St Johns Church and a capped well. On the first floor you will find the master bedroom with en-suite bathroom. There is also a shower room on this floor and two further double bedrooms, one with a feature fireplace and one overlooking the garden.

On the second floor is one large room with a feature fireplace, this room could be a master bedroom or a second reception room. On the top floor are two further bedrooms, one large with views towards St John's Church and one small double. Externally there is an long terraced garden with stone steps leading up to seating areas with space for a table and chairs. The garden has a variety of mature shrubs and fruit trees and is extremely private. There is in addition a parking space to the front. The property is situated in an enviable location close to the independent shops, cafes and restaurants of Catherine Hill. Frome is a historic market town, just under 13 miles from Bath and surrounded by beautiful countryside. The town has many amenities, including good schools, two theatres, a cinema and a station with rail links to Bath, Bristol and London Paddington. Council tax band- D Mains gas, Mains electricity, Mains water, Mains drainage.

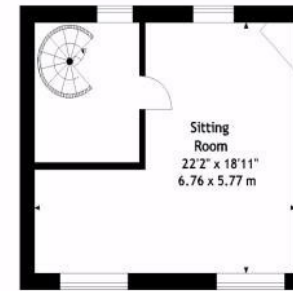




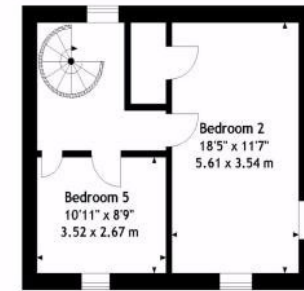


26 Vicarage Street, Frome BA11 1PU

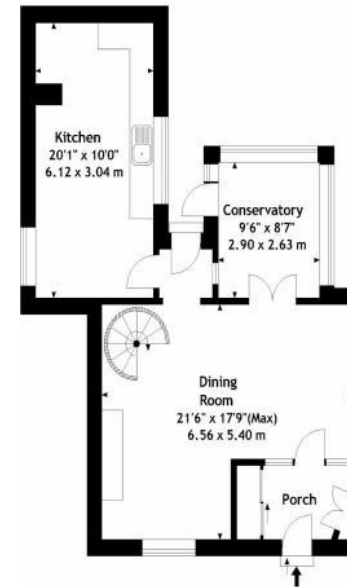
Approx. Gross Internal Area 2072.60 Sq. Ft - 192.60 Sq.M



Second Floor



Third Floor



Ground Floor



First Floor

For illustrative purposes only. Not to scale.

Whilst every attempt has been made to ensure accuracy of the floor plan all measurements are approximate and no responsibility is taken for any error, omission or measurement.

hunter
french

3HighStreet,Corsham,WiltshireSN13 0ES
Email:corsham@hunterfrench.co.uk

19PaulStreet,Frome,Somerset,BA111DT
Email:frome@hunterfrench.co.uk

FromeOffice:01373464040 | CorshamOffice:01249715775 | AssociatedParkLane:0203688974
BathOffice:01225444454 | DevizesOffice:01380722784 | TetburyOffice:01666505068

*Bath,Devizes&TetburyareallNonGuildMemberOffices

www.hunterfrench.co.uk