



Oldfield Road, Harlesden, London NW10 .| £700,000

- Charming three bedroom house
- Mid terrace period home
- Pretty rear garden
- Three bedrooms

- Opportunity to extend (STPP)
- Moments to Roundwood Park

"Vita Properties have been tremendously helpful throughout the process of securing/renting my flat. Informative about the property, prompt communication, easy to use dashboard for sharing of information, and pleasant to work with. Highly recommend!"

Kate Brookfield x Vita Properties present this wonderful three bedroom mid terrace house, located moments to the beautiful Roundwood Park NW10.

With opportunity to extend both on the ground floor and into the loft (STPP) this lovely home has been tastefully modernised allowing any buyer to move in and enjoy with the comfort of knowing that additional space could be added in the future should they wish.



The ground floor comprises a large kitchen through to dining space with double aspect, high ceilings and original period details. A generous living room is located to the rear of the home with doors directly onto a very pretty garden. A smart guest WC completes the ground floor.

The first floor offers three large bedrooms with high ceilings and a stunning bathroom.

-  House
-  Freehold
-  x 3
-  x 2
-  x 1

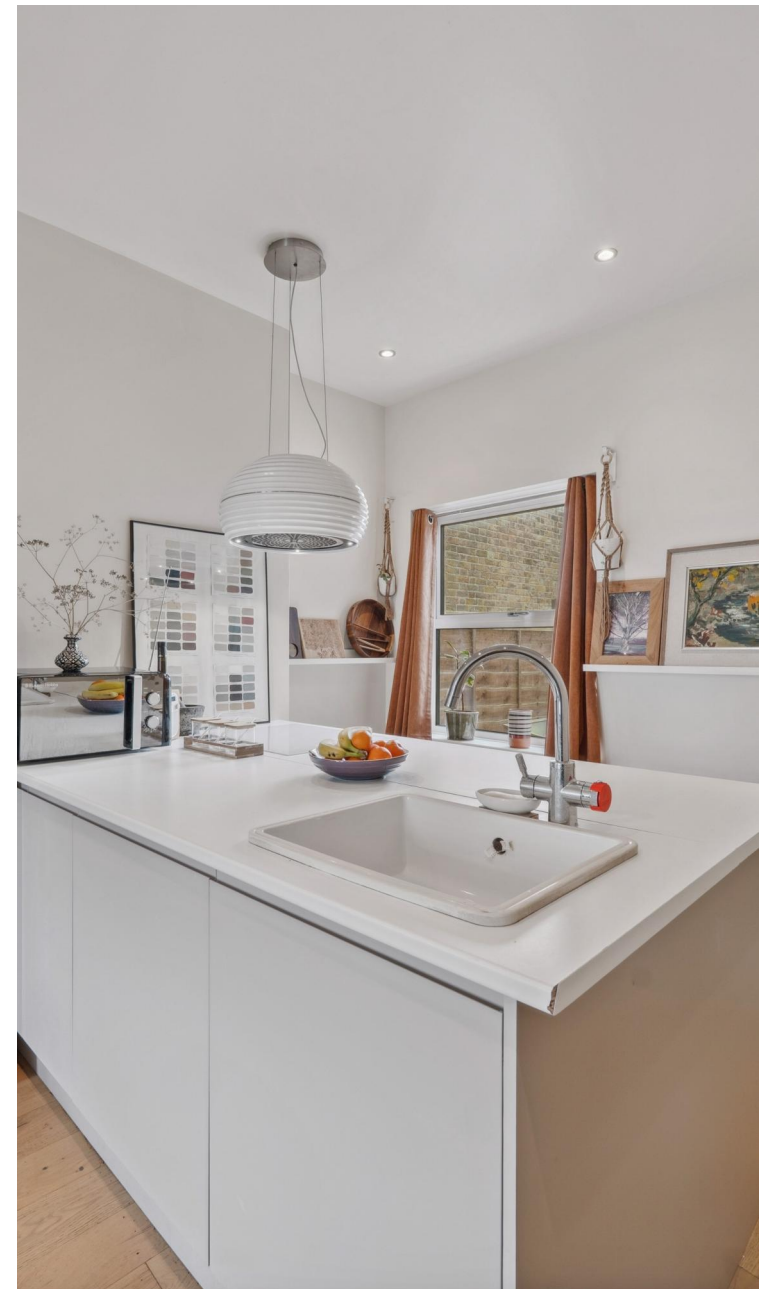


Kate Brookfield

 Kate.brookfield@vitaproperties.uk
 +4478 1365 5431



"I was very impressed with Vita and their network of buyers. When the sale of my flat fell through (twice) they worked extremely hard to find new buyers in a difficult market - thank you!"



"Working with Vita properties has been a smooth experience! No complaints at all. Our letting agent, Diana has been fantastic and very helpful throughout the whole process. I would highly recommend both Vita properties and Diana."



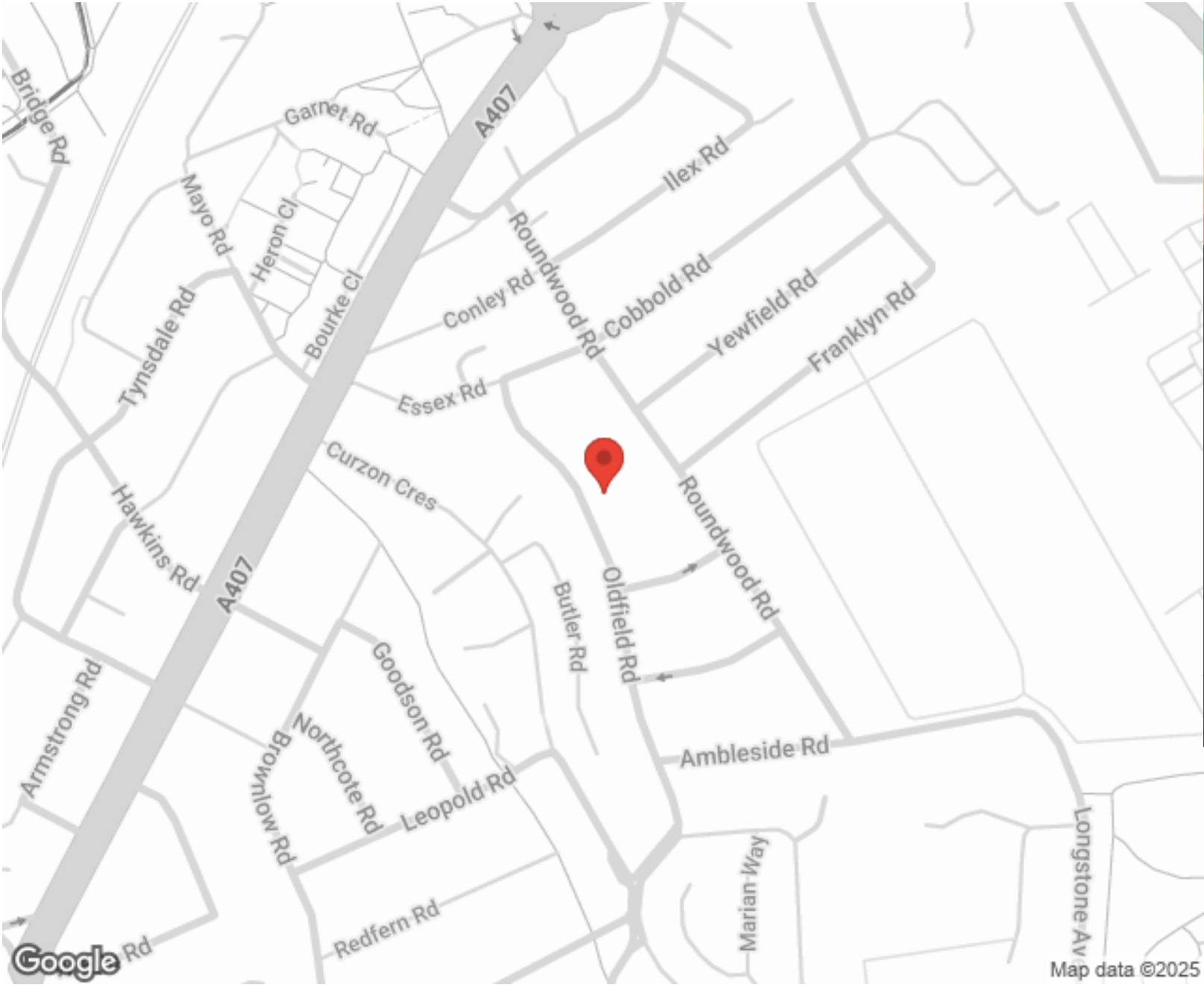
"I used Vita properties to find a flat recently and it was an overall professional, personalised and positive experience. Saira went the extra mile to accommodate to our needs and quick to help us whenever possible."



MORE INFO, PICTURES,
CONTACT ON
OUR WEBSITE



"Vita Properties is a very professional agency. My experience with them was incredible and the entire team was very helpful and kind throughout the renting process. I'd highly recommend!"



Score	Energy rating	Current	Potential
92+	A		
81-91	B		86 B
69-80	C	75 C	
55-68	D		
39-54	E		
21-38	F		
1-20	G		

SCAN FOR MORE
GOOGLE REVIEWS

Google
★★★★★
4.9 Stars | 132 Reviews

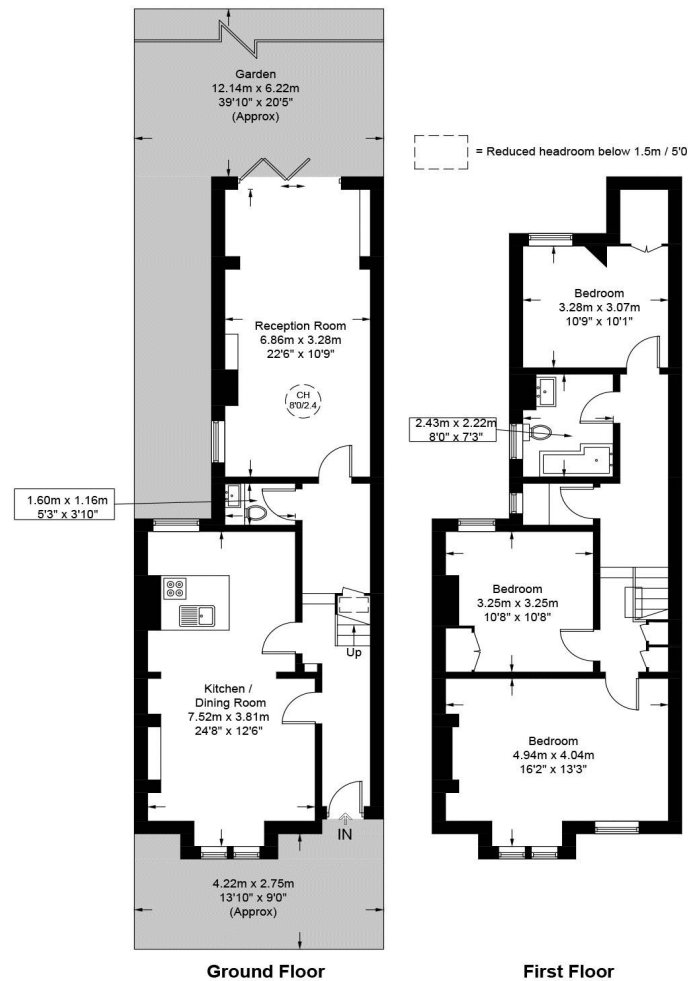
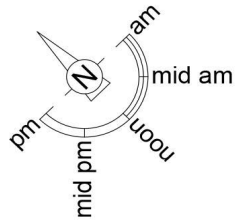
Find us on social media

vitaproperties
 VitaProperties
 VitaProperties

Oldfield Road, NW10

Approximate Gross Internal Area = 1317 sq ft / 122.4 sq m

Restricted Height = 3 sq ft / 0.3 sq m



This plan is for layout guidance only and is not drawn to scale unless stated. All dimensions, including windows, doors, and the Total Gross Internal Area (GIA), are approximate. For precise measurements, please consult a qualified architect or surveyor before making any decisions based on this plan.



**Certified
Property
Measurer**