



Glenhurst Avenue, Dartmouth Park, London NW5 .| £2,175,000

- Superb family house in highly desirable location, moments to Hampstead Heath
- Five bedrooms, four bathrooms
- Large open plan ground floor space
- Air conditioning, underfloor heating, Cat 6 cabling
- Custom made kitchen (double ovens, double wine fridge)
- End of terrace

"Vita Properties have been tremendously helpful throughout the process of securing/renting my flat. Informative about the property, prompt communication, easy to use dashboard for sharing of information, and pleasant to work with. Highly recommend!"

Kate Brookfield x Vita Properties present this wonderful five bedroom family home, located within moments of Hampstead Heath.

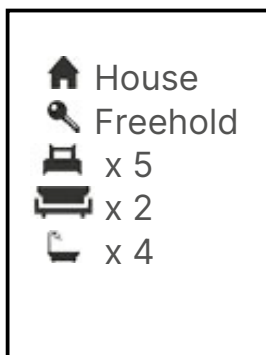
Situated on Glenhurst Avenue, a quiet residential location in Dartmouth Park NW5 and within striking distance of the Heath, Parliament Fields and Swains Lane, this end of terrace house was fully renovated and extended in 2020 and offers in close to 2500 square foot of internal space.

Beautifully designed throughout, this home meets the needs of a modern family, with four en suite bathrooms and an expansive open ground floor space, encompassing living areas, kitchen and dining space. Two sets of sliding doors open fully to create a seamless extension to the garden area, further adding to this impressive entertaining space.

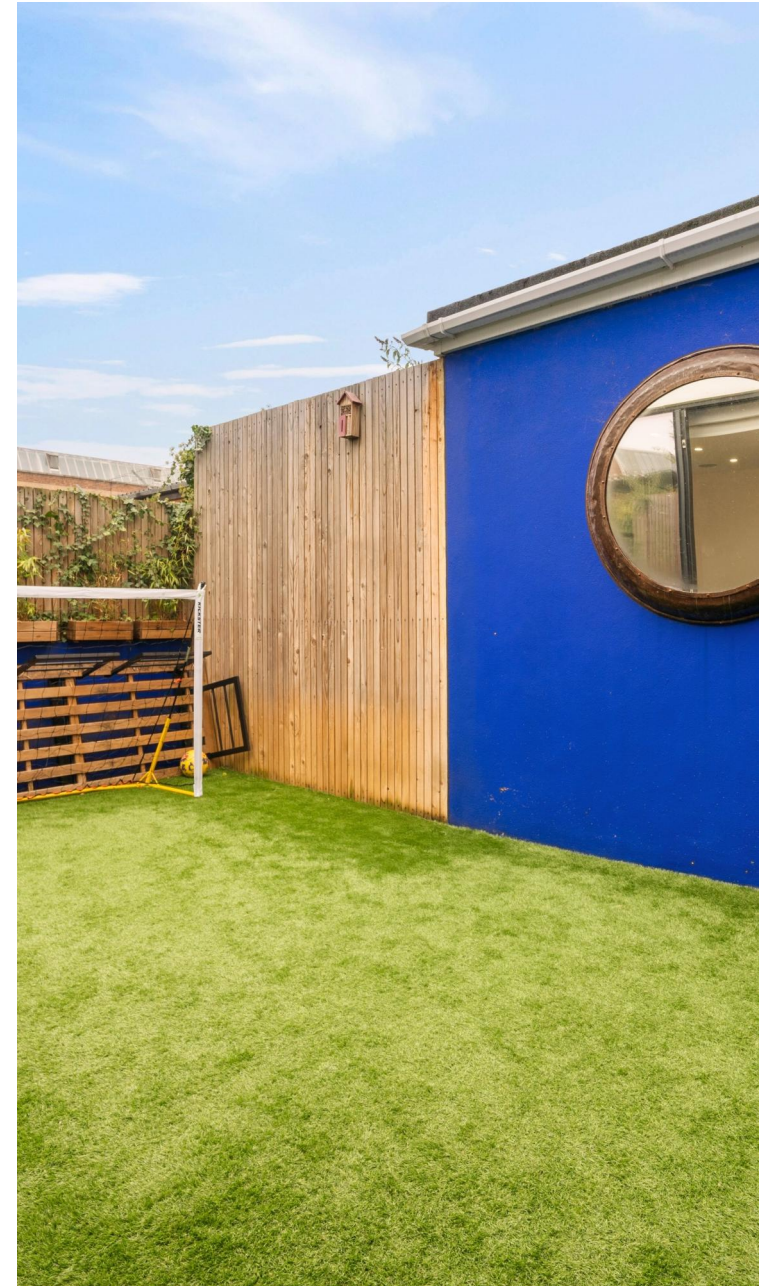


Kate Brookfield

✉ Kate.brookfield@vitaproperties.uk
☎ +4478 1365 5431



"I was very impressed with Vita and their network of buyers. When the sale of my flat fell through (twice) they worked extremely hard to find new buyers in a difficult market - thank you!"



"Working with Vita properties has been a smooth experience! No complaints at all. Our letting agent, Diana has been fantastic and very helpful throughout the whole process. I would highly recommend both Vita properties and Diana."



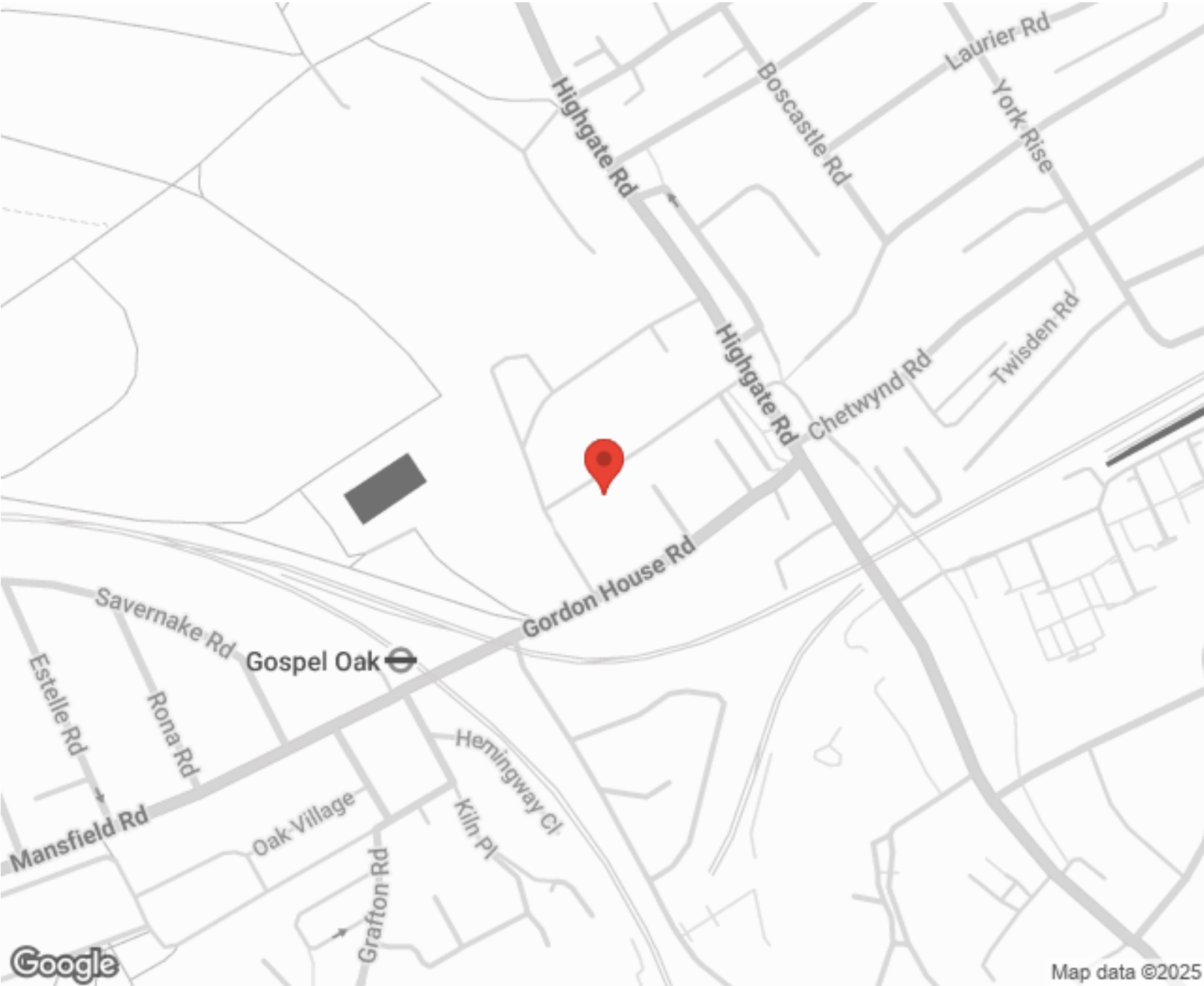
"I used Vita properties to find a flat recently and it was an overall professional, personalised and positive experience. Saira went the extra mile to accommodate to our needs and quick to help us whenever possible."



MORE INFO, PICTURES,
CONTACT ON
OUR WEBSITE



"Vita Properties is a very professional agency. My experience with them was incredible and the entire team was very helpful and kind throughout the renting process. I'd highly recommend!"



Score	Energy rating	Current	Potential
92+	A		
81-91	B		82 B
69-80	C		
55-68	D	63 D	
39-54	E		
21-38	F		
1-20	G		

SCAN FOR MORE
GOOGLE REVIEWS



Google



4.9 Stars | 132 Reviews

Find us on social media



vitaproperties



VitaProperties

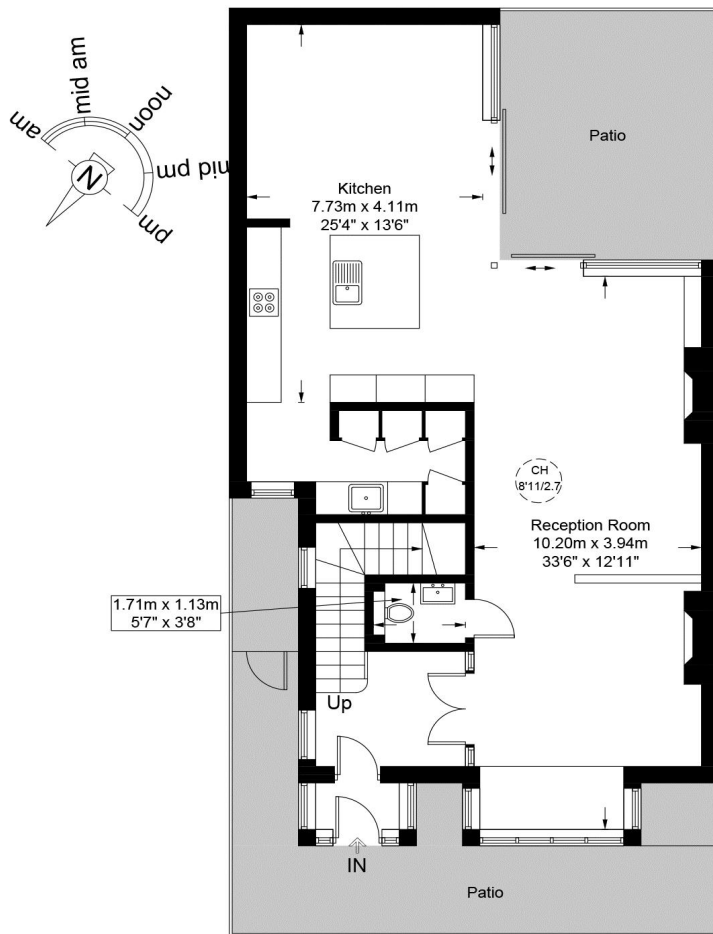


VitaProperties

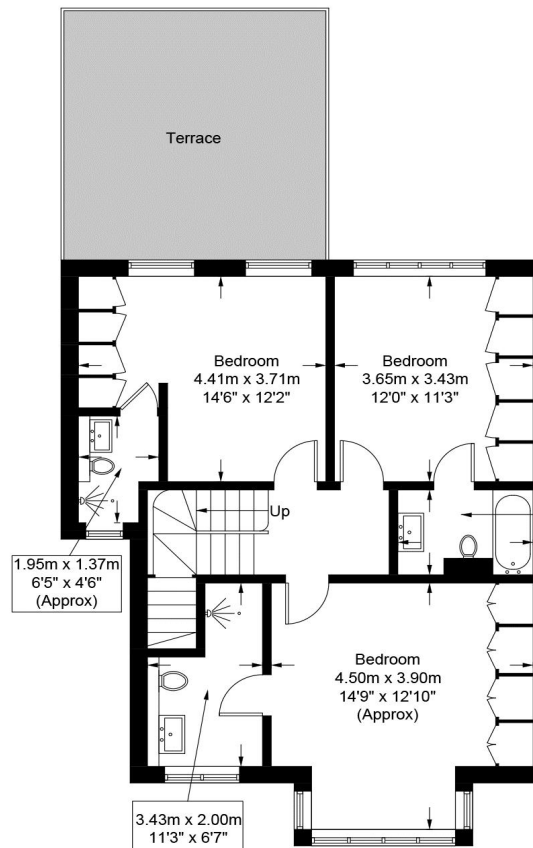
Glenhurst Avenue, NW5

Approximate Gross Internal Area = 2473 sq ft / 229.8 sq m

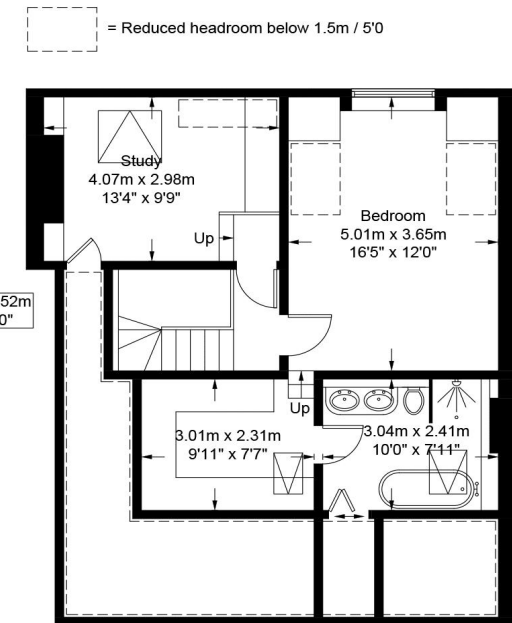
Restricted Height = 230 sq ft / 21.4 sq m



Ground Floor



First Floor



Second Floor

This plan is for layout guidance only and is not drawn to scale unless stated. All dimensions, including windows, doors, and the Total Gross Internal Area (GIA), are approximate. For precise measurements, please consult a qualified architect or surveyor before making any decisions based on this plan.



Certified
Property
Measurer