



BlueprintProperty Group

From £425,000  
Hillmount Court, Upminster, RM14



 1  
Bedroom

 1  
Bathroom

1 Oscar House, 1b Fairfield Road, Brentwood, Essex, CM14 4LR |  
management@blueprintproperties.co.uk

01277287931





One-bed apartments from £425,000 Two bed apartments from £475,000 | Move in Summer 2024 | Bespoke finishes throughout | Allocated parking for each apartment | Large balcony & gardens on ground floor apartments | Short walk from Upminster town centre | Access to Upminsters C2C Train line | Brochure available upon request

Introducing a prestigious new luxury development nestled in the heart of Upminster, offering residents an unparalleled living experience. Comprising of six exquisite apartments, including two ground-floor one-bedroom apartments, two two-bedroom apartments, and two penthouse apartments, each boasting its own private outside space and one allocated parking space.

Conveniently situated within close proximity to Upminster's C2C train station (0.4 miles) and Upminster Bridge Tube Station on the District Line (0.3 miles), commuting becomes effortless, granting residents easy access to London's bustling city centre and beyond. Additionally, the vibrant energy of Upminster's bustling high street is just a short walk away, offering an array of shops, restaurants, and amenities.

Elevating luxury living to new heights, this development showcases bespoke Rok kitchens, seamlessly blending style and functionality. Revel in the comfort of underfloor heating and the sophistication of Bosch appliances, ensuring every culinary endeavor is a delight. The bathrooms and ensuites, meticulously designed with contemporary Crosswater finishes, exude elegance with high-end porcelain tiles adorning both walls and floors with a different theme to each bathroom.

Designed to exceed expectations, all apartments boast bright and spacious interiors, creating an inviting ambiance ideal for relaxation and entertainment. Prices start from £425,000 for one-bedroom apartments and £475,000 for two-bedroom apartments. With move-in anticipated for the summer of 2024, seize the opportunity to elevate your lifestyle and be among the privileged few to call this exceptional development home.



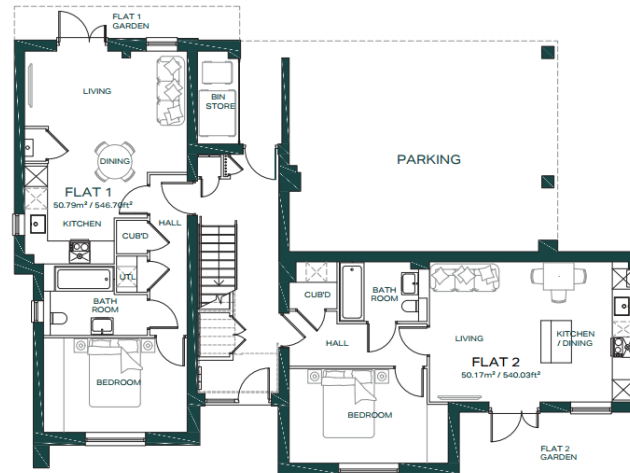
## GROUND FLOOR

### APARTMENT ONE - 546.70ft<sup>2</sup>

- One Bedroom
- Kitchen, Living, Dining
- Bathroom
- Garden

### APARTMENT TWO - 540.03ft<sup>2</sup>

- One Bedroom
- Kitchen, Living, Dining
- Bathroom
- Garden



# Coming soon

