



FOR STARTERS



PER MONTH
£1,395 Per Month

MAIN COURSE

A lovely, well-kept family home located on the south side of the River Avon, within the catchment area for well-regarded primary schools.

The ground floor offers a bright entrance hallway, two spacious and versatile reception rooms, and a modern kitchen with a handy utility area. The rear reception room opens out to a generous garden with a lawn, patio area perfect for outdoor dining, and a discreet bin store.

Upstairs, you'll find two comfortable double bedrooms – the main bedroom includes built-in wardrobes – along with a good-sized single bedroom and a smart family bathroom.

To the front, there's a neatly maintained garden, driveway parking, a carport, and a garage, providing plenty of space and practicality.

A great option for those looking to settle in a quiet, family-friendly area.

Sorry no pets.

Available from the 24th of June.



LOCATION

Please see Tenancy Information under the Lettings heading on the toolbar on our website.

KEY INGREDIENTS



Tenure



Council Tax
Band - E



EPC
Band - C



TBC



Heating system
TBC



TBC

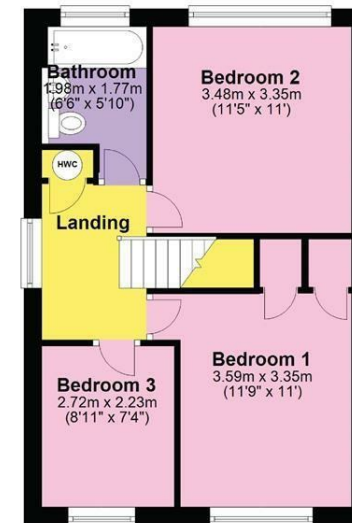
WHY NOT TAKE
A LOOK INSIDE?
GIVE US A CALL
01789 414222



Ground Floor
Approx. 65.0 sq. metres (699.4 sq. feet)



First Floor
Approx. 42.3 sq. metres (455.3 sq. feet)



Total area: approx. 107.3 sq. metres (1154.8 sq. feet)

DISCLAIMER - Floor plans shown are for general guidance only. Whilst every attempt has been made to ensure that the floorplan measurements are as accurate as possible, they are for illustrative purposes only.

**FOR MORE INFO AND
TO SEE OUR OTHER
LOVELY PROPERTIES
CHECK OUT OUR WEBSITE**

MOVEWITHEDWARDS.CO.UK

**HAVE YOU GOT
A PROPERTY
TO SELL?
WE'D LOVE TO
HAVE A CHAT
01789 414222**

**DID YOU KNOW WE ALSO
DO MORTGAGES.
FOR FREE ADVICE
SPEAK TO
ONE OF OUR
CONSULTANTS**

