



FOR STARTERS



PER CALENDAR
£1,100 Per Calendar

MAIN COURSE

****A Charming Two-Bedroom Flat Close to Town Centre****

Nestled on the second floor, this delightful two-bedroom flat offers both convenience and comfort, just a short stroll from the heart of the town centre.

Upon entering, you're welcomed by a bright and airy hallway that sets the tone for the entire property. The spacious living area, with large windows offering lots of natural light, is perfect for entertaining guests or unwinding after a long day. The modern kitchen is well-equipped with integrated appliances, making meal preparation a breeze.

The master bedroom is generously sized, featuring built-in wardrobes that provide ample storage. The second double bedroom, also with built-in storage, is versatile and ideal for guests, a home office, or additional family members. The recently refurbished family bathroom is finished to a high standard, offering a contemporary space to relax and refresh.

Externally, the property benefits from a well-maintained communal garden, ideal for enjoying some outdoor space. There is an allocated parking space conveniently located outside the garage for Flat 6, along with permission to use one of the six additional parking bays provided.

This flat is perfect for those looking for modern living with easy access to town amenities, making it an excellent choice for professionals, couples, or small families.

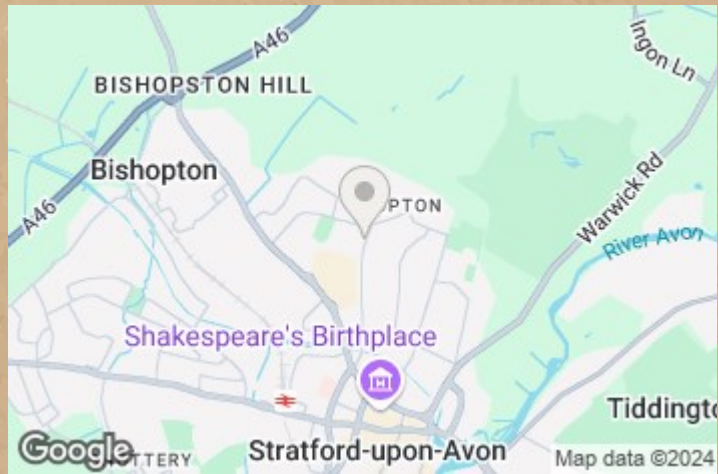
Sorry pets are not allowed in the building.

Garage not part of the let.

Available start of November.



LOCATION



KEY INGREDIENTS



Tenure
N/A



Council Tax
Band - C



EPC
Band - D



TBC

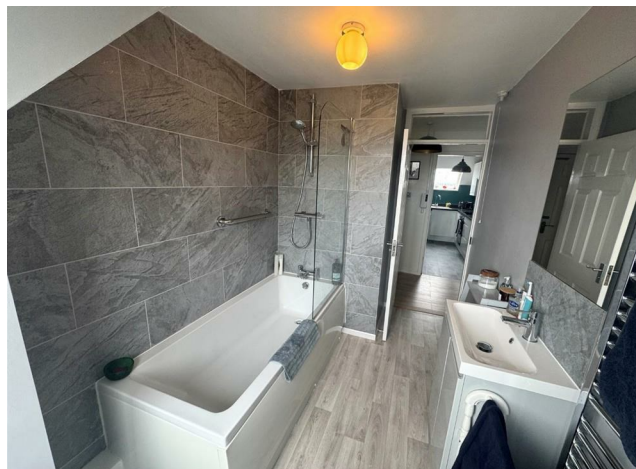
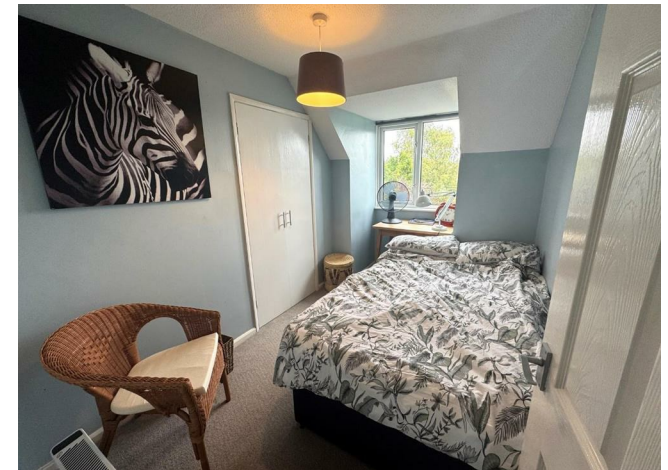


Heating system
Electric heaters



TBC

WHY NOT TAKE
A LOOK INSIDE?
GIVE US A CALL
01789 414222



**FOR MORE INFO AND
TO SEE OUR OTHER
LOVELY PROPERTIES
CHECK OUT OUR WEBSITE**

MOVEWITHEDWARDS.CO.UK

**HAVE YOU GOT
A PROPERTY
TO SELL?
WE'D LOVE TO
HAVE A CHAT
01789 414222**

**DID YOU KNOW WE ALSO
DO MORTGAGES.
FOR FREE ADVICE
SPEAK TO
ONE OF OUR
CONSULTANTS**

