



FOR STARTERS



PER MONTH
£3,500 Per Month

MAIN COURSE

A breath-taking Grade II listed barn conversion set in a picturesque rural location.

Upon entering through a spacious porch, you step into a welcoming entrance hall that doubles as a dining room, seamlessly connecting to the serene garden room. To the left, you'll discover a spacious and charming kitchen, with plenty of space to comfortably fit a large dining table. This well-appointed kitchen features a large AGA with gas rings and an integrated electric oven and hob, a fridge/freezer, and a dishwasher. Adjacent to the kitchen is a practical utility room with access to the back garden and a convenient downstairs cloakroom.

Crossing the entrance hall, you enter an impressive 22-foot living room with patio doors opening to both the front and back gardens. This cosy space boasts a feature electric log burner fireplace. From the living room, a bright hallway leads to a staircase ascending to the first floor, access to the double garage, two spacious double bedrooms, and a beautifully finished modern bathroom.

Ascending the main staircase brings you to a sunlit landing with built-in storage. Here, the master bedroom awaits, complete with a dressing area furnished with fitted furniture and an ensuite bathroom. Across the landing lies the second bedroom, also featuring an ensuite bathroom and fitted furniture. A secondary staircase near the kitchen leads to another expansive bedroom adorned with feature beams, a sixth bedroom ideal for an office, and a large bathroom equipped with a bath and separate shower.

The external area at the front of the property offers parking for five cars, two electric car charging points, and access to surrounding woods and fields, perfect for leisurely afternoon walks. The back garden features a spacious lawn, a patio for outdoor dining, a chicken coop, a play area, and a shed.

Sorry pets are not accepted



LOCATION



KEY INGREDIENTS



Tenure



Council Tax
Band - G



EPC
Band - B



TBC



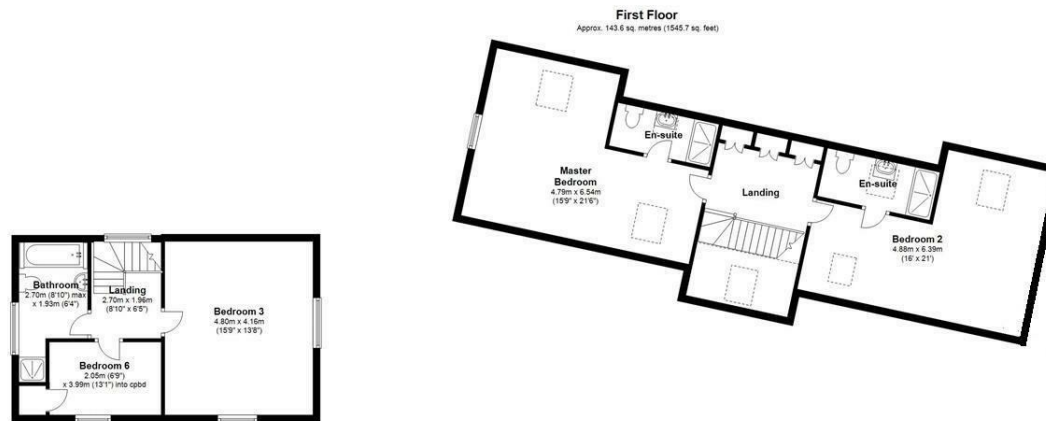
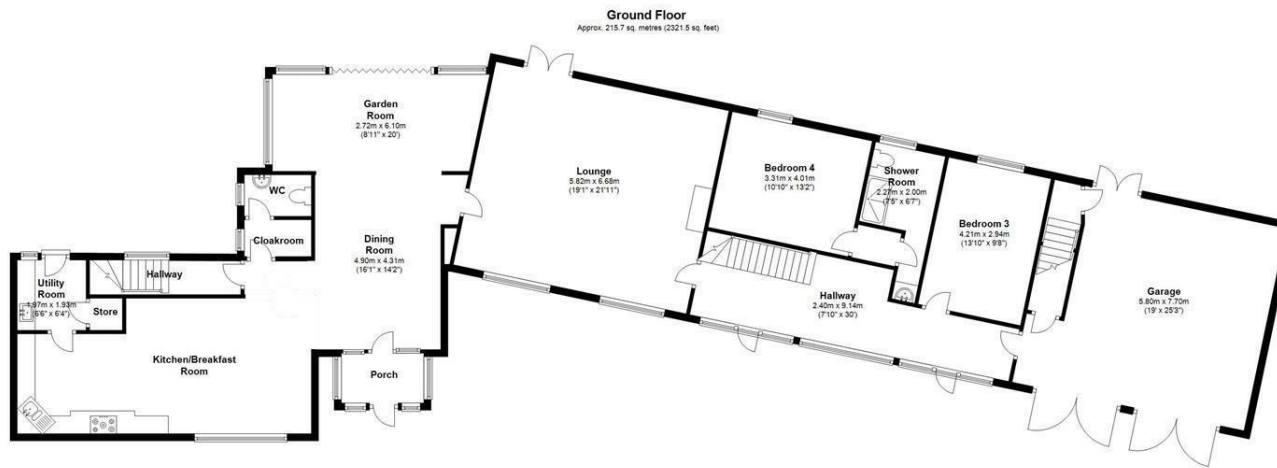
Heating system
TBC



TBC

WHY NOT TAKE
A LOOK INSIDE?
GIVE US A CALL
01789 414222





Total area: approx. 359.3 sq. metres (3867.2 sq. feet)

**FOR MORE INFO AND
TO SEE OUR OTHER
LOVELY PROPERTIES
CHECK OUT OUR WEBSITE**

MOVEWITHEDWARDS.CO.UK

**HAVE YOU GOT
A PROPERTY
TO SELL?
WE'D LOVE TO
HAVE A CHAT
01789 414222**

**DID YOU KNOW WE ALSO
DO MORTGAGES.
FOR FREE ADVICE
SPEAK TO
ONE OF OUR
CONSULTANTS**

