



FOR STARTERS



PER MONTH
£1,050 Per Month

MAIN COURSE

A well presented two double bedroom house situated within the popular Trinity Mead development.

The accommodation comprises; entrance hall with downstairs cloakroom, bright living room, kitchen/dining room with appliances including oven with four ring gas hob, fridge/freezer, dishwasher and washing machine.

Upstairs are two double bedrooms, one with fitted wardrobes and family bathroom.

The garden is enclosed and leads to the self-contained office which has heating, lighting with power and Wi-Fi connection - Ideal for working from home.

Available mid-July

Sorry no pets.

Minimum affordability is £31,500.



LOCATION

Please see Tenancy Information under the Lettings heading on the toolbar on our website.

KEY INGREDIENTS



Tenure



Council Tax
Band - C



EPC
Band - C



TBC

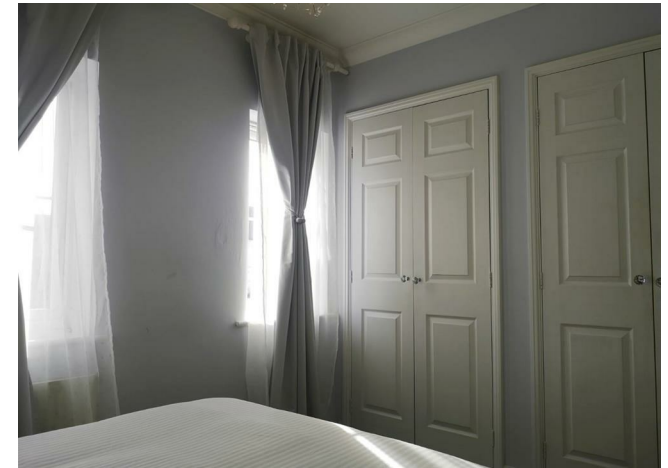
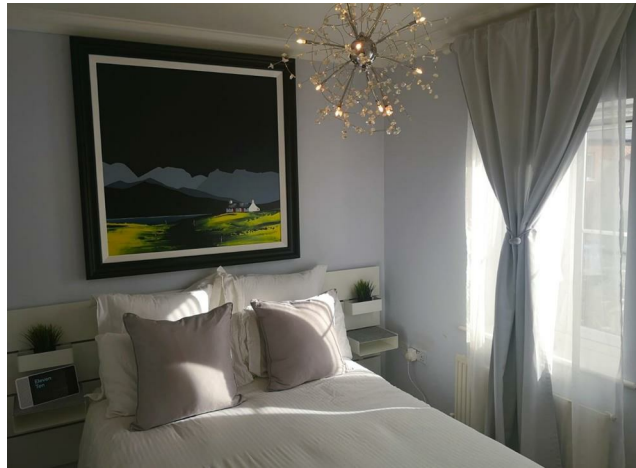


Heating system
TBC



TBC

WHY NOT TAKE
A LOOK INSIDE?
GIVE US A CALL
01789 414222



**FOR MORE INFO AND
TO SEE OUR OTHER
LOVELY PROPERTIES
CHECK OUT OUR WEBSITE**

MOVEWITHEDWARDS.CO.UK

**HAVE YOU GOT
A PROPERTY
TO SELL?
WE'D LOVE TO
HAVE A CHAT
01789 414222**

**DID YOU KNOW WE ALSO
DO MORTGAGES.
FOR FREE ADVICE
SPEAK TO
ONE OF OUR
CONSULTANTS**

