





# FOR STARTERS



£900

## MAIN COURSE

A large ground floor one bedroom flat only a short walk away from Stratford-upon-Avon town centre.

Situated on a quiet road, this flat consists of a large open plan kitchen/ living/ dining area, large double bedroom and a good sized bathroom with a shower over the bath.

Added benefits of this property are the large windows in the living area and bedroom which allow plenty of natural light into the property, its own private entrance, a parking space on the driveway at the front of the building and use of the communal gardens to the rear of the property.

Property is unfurnished.

Sorry no pets.

Available now.





# LOCATION

Please see Tenancy Information under the Lettings heading on the toolbar on our website.

## KEY INGREDIENTS



Tenure



Council Tax  
Band - C



EPC  
Band -



TBC

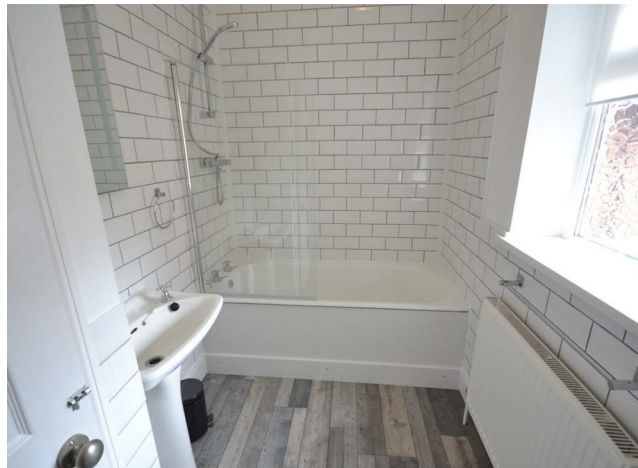


Heating system  
TBC



TBC

WHY NOT TAKE  
A LOOK INSIDE?  
GIVE US A CALL  
01789 414222



**FOR MORE INFO AND  
TO SEE OUR OTHER  
LOVELY PROPERTIES  
CHECK OUT OUR WEBSITE**

**[MOVEWITHEDWARDS.CO.UK](http://MOVEWITHEDWARDS.CO.UK)**

**HAVE YOU GOT  
A PROPERTY  
TO SELL?  
WE'D LOVE TO  
HAVE A CHAT  
01789 414222**

**DID YOU KNOW WE ALSO  
DO MORTGAGES.  
FOR FREE ADVICE  
SPEAK TO  
ONE OF OUR  
CONSULTANTS**

