



## Holloway Road

, London, N7 8DL

£330 Per Week

A collection of four En-suite bedrooms situated in a newly developed property moments walk from London Metropolitan University. The property is split over three levels with the first floor boasting a communal area with brand new kitchen facilities, and large dining table and chairs. The private bedrooms (all doubles) are located on the first, second and third floors, each bedroom room is fully furnished with bed, bedside tables etc... All of the rooms have a private en-suite shower room. The rent is inclusive of Council Tax, Water and Wi-fi, as these costs are covered by the Landlord, The tenant is responsible to pay for the electricity in their own room. The property is within 5 mins walk to both Holloway Road station and Highbury & Islington Station. The property will be ready for occupation from early January 2026.

\*\* Bedroom 3, is a double bedroom with large storage cupboard located on the second floor facing the front of the building, it is fully furnished\*\*

### Viewing

Please contact our Messila Residential Office on 020 7586 6699 if you wish to arrange a viewing appointment for this property or require further information.

- Double Bedrom
- En-suite Bathroom
- Second Floor Floor
- Communal Space
- Shared Kitchen
- Minutes to tube
- 1 min walk to London Metropolitan University



1



1



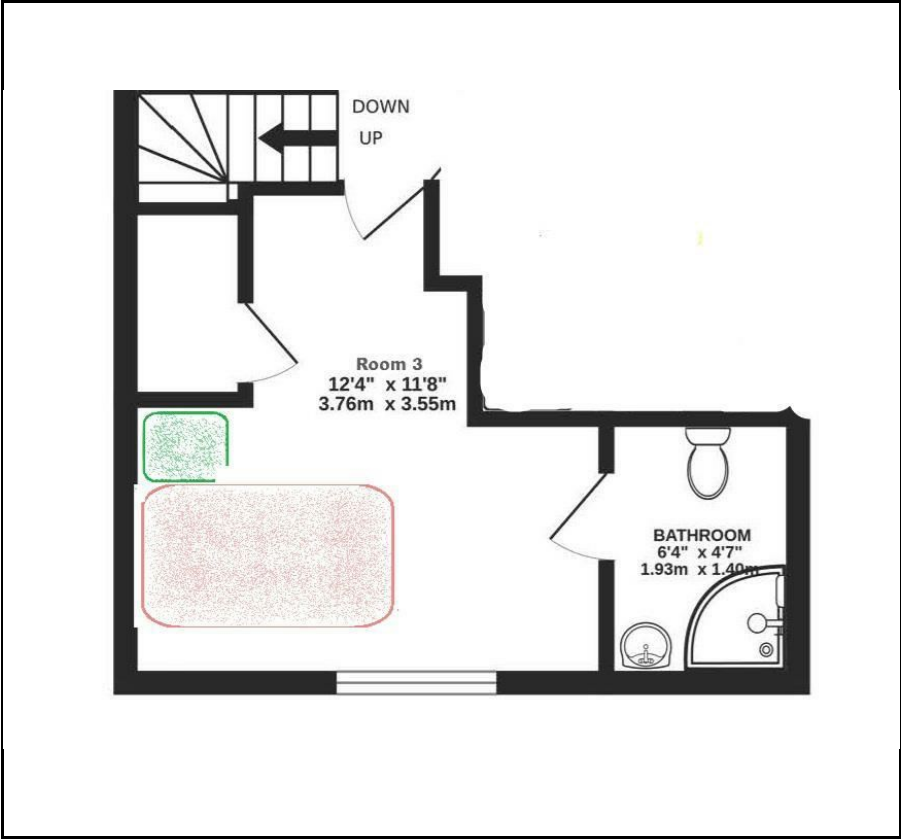
0



E



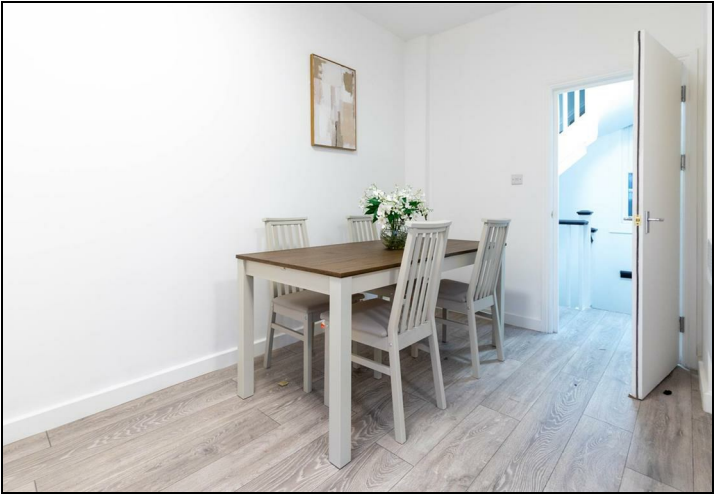
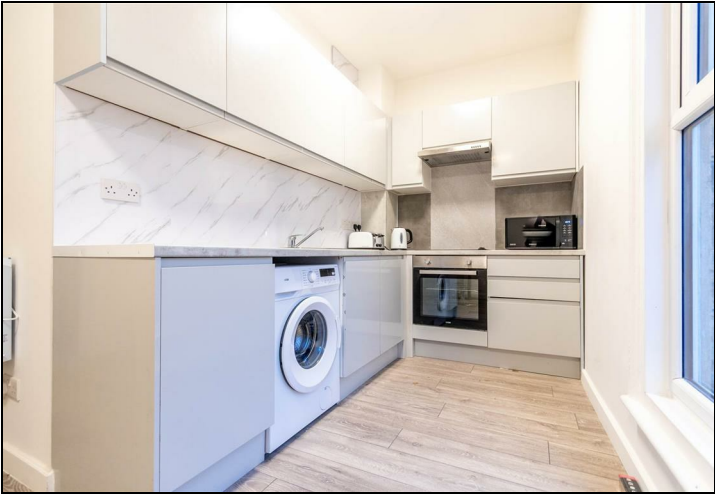
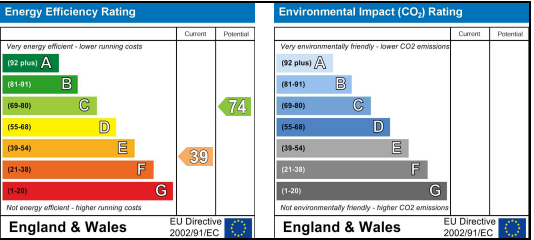
Floor Plan



Area Map



Energy Efficiency Graph



These particulars, whilst believed to be accurate are set out as a general outline only for guidance and do not constitute any part of an offer or contract. Intending purchasers should not rely on them as statements of representation of fact, but must satisfy themselves by inspection or otherwise as to their accuracy. No person in this firms employment has the authority to make or give any representation or warranty in respect of the property.