



Kensington High Street

, Kensington, W8 6SU

£475 Per Week

** Landlord to pay for the Gas central heating/hotwater plus Wifi , Tenant is responsible to pay for the Council Tax, Thames water and electricity used in flat **

This amazingly located, spacious studio apartment (the largest self contained unit in the Building) is situated on the second floor (NO lift) of a well refurbished building, right in the heart of Kensington High Street, minutes from the underground station.

The property has a spacious living area (3 large sash windows facing eastside - away from Kensington high street), with sofa, dining table and chairs, bedroom with plenty of storage, double bed and large shower/WC. It also benefits from being located to the quieter rear of the building and has wooden flooring throughout and secure entry.

The property is offered fully furnished and is available for long let only from early JULY 2025.

- Extra Large Studio
- second floor
- wooden flooring
- perfect location
- 2 minutes to the underground

Viewing

Please contact our Messila Residential Office on 020 7586 6699 if you wish to arrange a viewing appointment for this property or require further information.



0



1

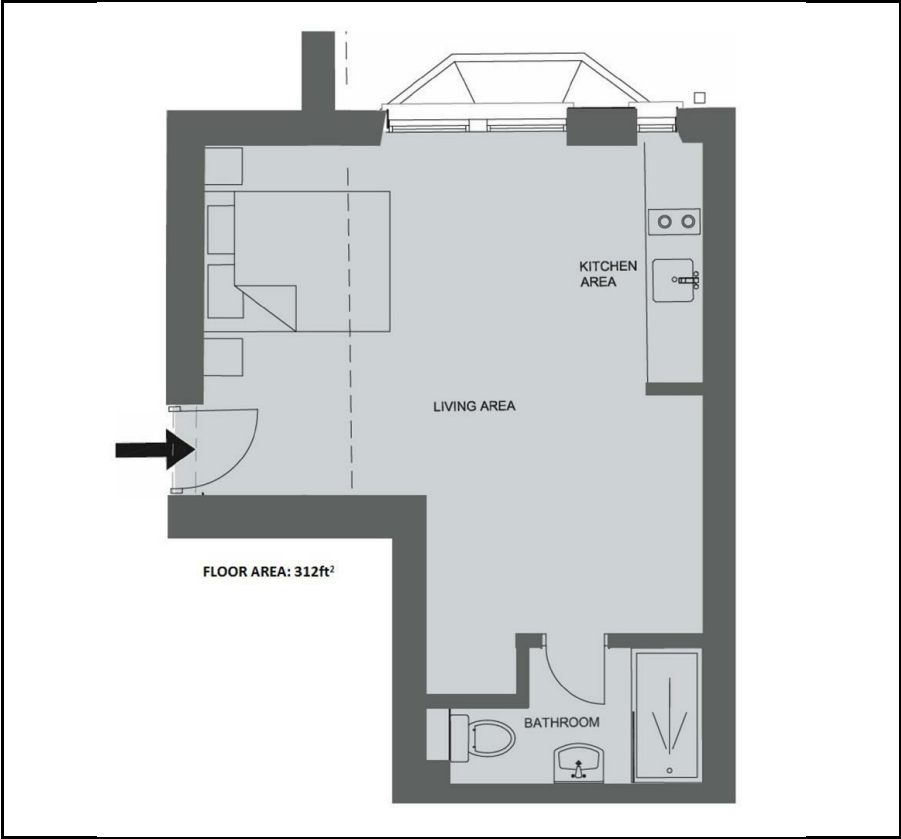


1



C

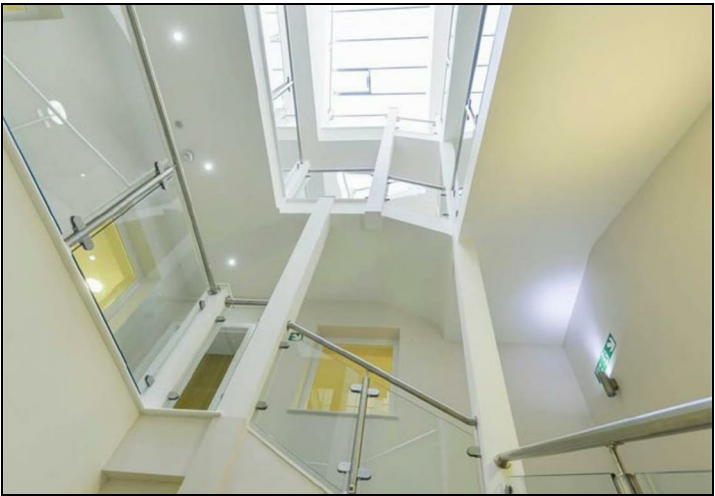
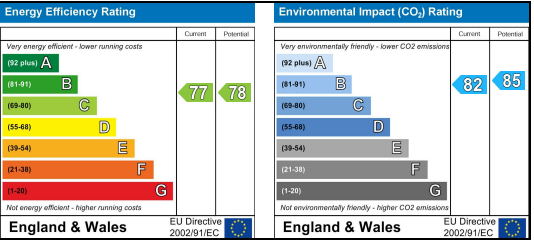
Floor Plan



Area Map



Energy Efficiency Graph



These particulars, whilst believed to be accurate are set out as a general outline only for guidance and do not constitute any part of an offer or contract. Intending purchasers should not rely on them as statements of representation of fact, but must satisfy themselves by inspection or otherwise as to their accuracy. No person in this firms employment has the authority to make or give any representation or warranty in respect of the property.