



## Cardinal Mansions

Carlisle Place, Victoria, SW1P 1EY

**£1,150 Per Week**

This Building Management ONLY permits family rental OR 2 sharers - so ideal for a Family or couple.

An extremely well presented, spacious raised ground floor apartment with welcoming entrance hall, three double bedrooms and three bathrooms (2 ensuite shower/WC, one family bath/WC.).

This fine mansion apartment is moments walk from Victoria and Wilton Street's ample shopping and cafe/restaurants. Not to mention excellent schools in the vicinity and with, Westminster Cathedral only a short walking distance, Flat's affording an impressive double reception room and benefits from large bay windows and high ceilings, there is also a good sized eat-in fitted kitchen with tiled floor with ample storage, large sash windows overlooking well of block. The property also benefits from having wooden flooring in principle rooms, own gas central heating and the Building has an on site caretaker. The flat is offered furnished or unfurnished and available NOW for long let.

- Double receptions
- Three Double Bedroom
- Three Bathrooms
- Two e/s bathrooms
- Fitted eat in kitchen
- Close to Station
- Huge High Ceilings

### Viewing

Please contact our Messila Residential Office on 020 7586 6699 if you wish to arrange a viewing appointment for this property or require further information.



3



3



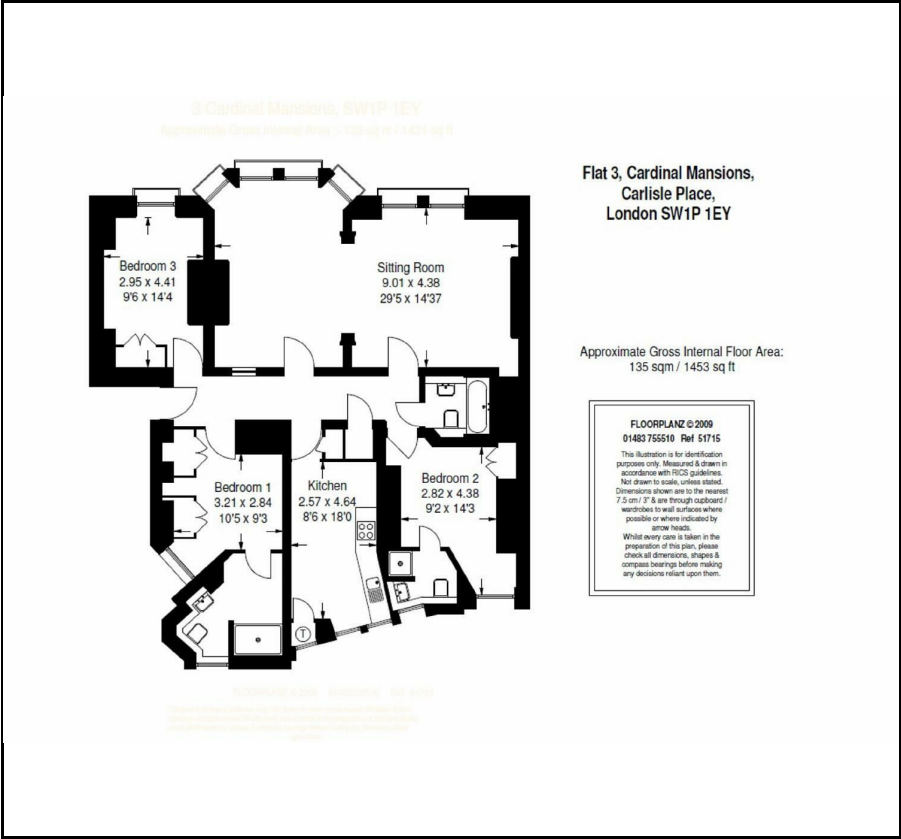
2



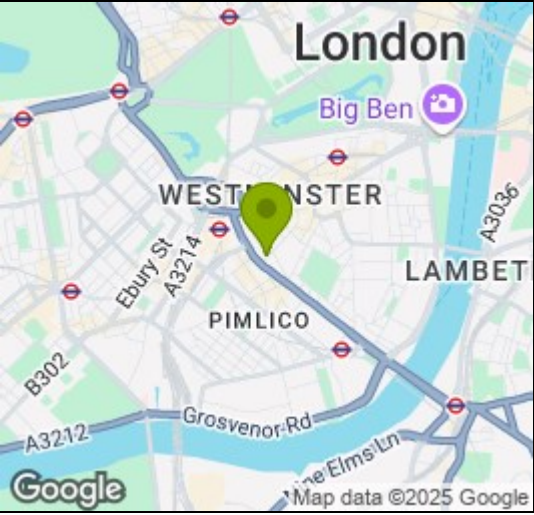
C



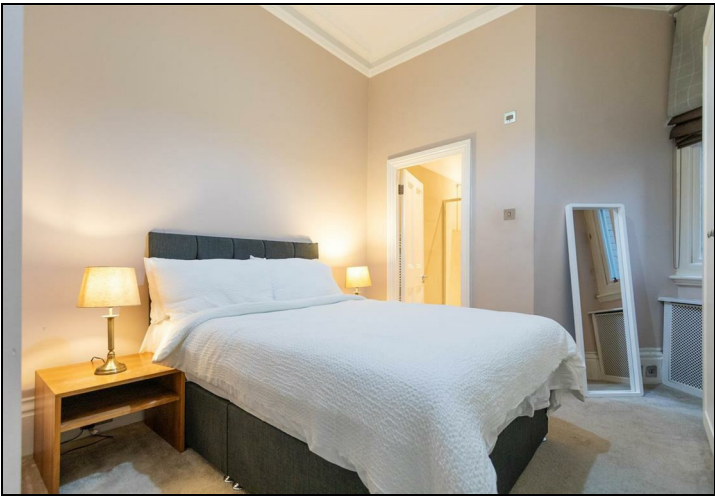
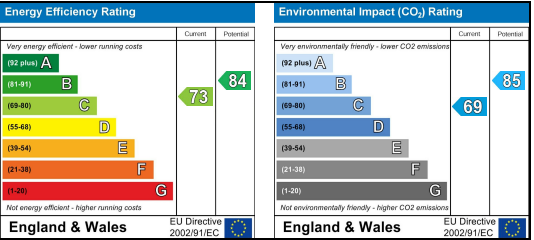
Floor Plan



Area Map



Energy Efficiency Graph



These particulars, whilst believed to be accurate are set out as a general outline only for guidance and do not constitute any part of an offer or contract. Intending purchasers should not rely on them as statements of representation of fact, but must satisfy themselves by inspection or otherwise as to their accuracy. No person in this firms employment has the authority to make or give any representation or warranty in respect of the property.