



## Battersea Park Road

, Battersea, SW11 4JP

£375 Per Week

This is a spacious, bright self contained studio apartment situated on TOP floor/ third floor (No lift) with few skylights, The building is located to the south side of Battersea Park, and is less than five minutes walk from Battersea Park and Queenstown Road overground stations, making it only 2 stops from Waterloo. This delightful studio benefits from having wooden flooring, large fitted wardrobe, comfortable double bed, open plan fitted kitchen including, full size oven and hob, washing/dryer machine, fridge and plenty of storage space. Ensuite shower cubicle/wc with window.

Tenant pays for own use of electric (card meter), Council tax, Thames water and Wifi/TV package.

The property is offered furnished and is available from Early July for one year term (with break option).

- Huge Studio Apartment
- Third Floor (walk up)
- Wooden Flooring
- Double Glazing
- 5 mins to station

### Viewing

Please contact our Messila Residential Office on 020 7586 6699 if you wish to arrange a viewing appointment for this property or require further information.



0



1

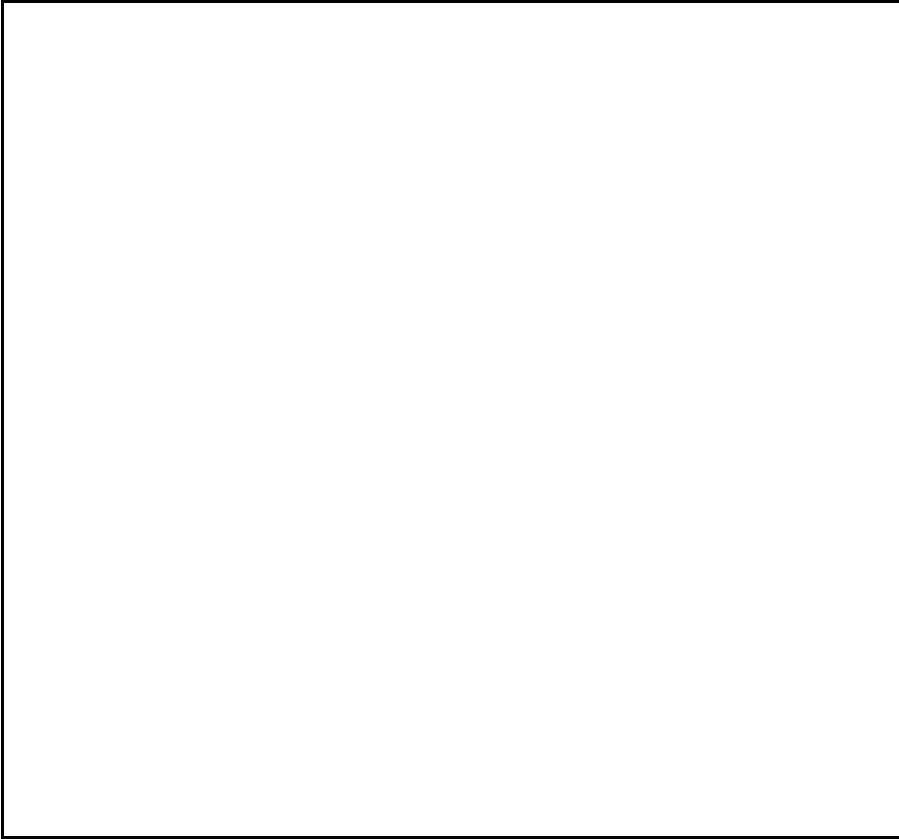


1

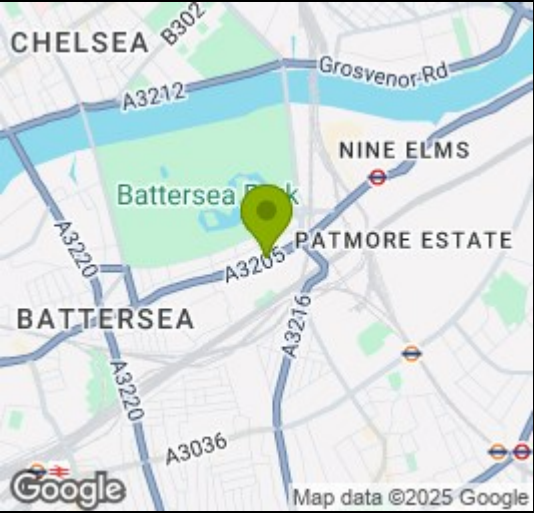


D

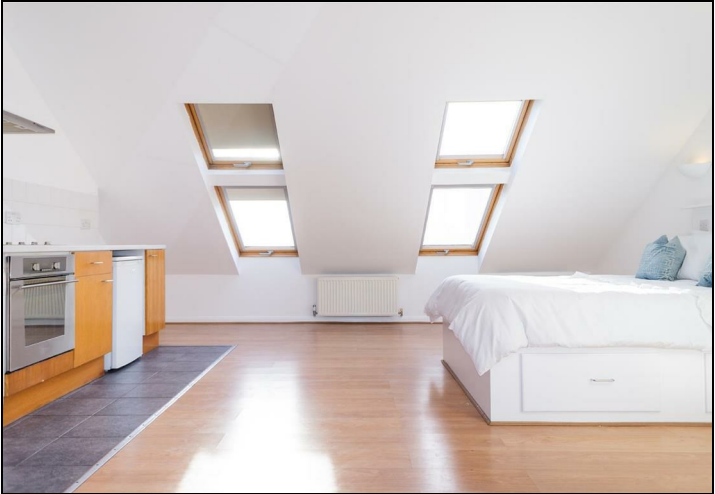
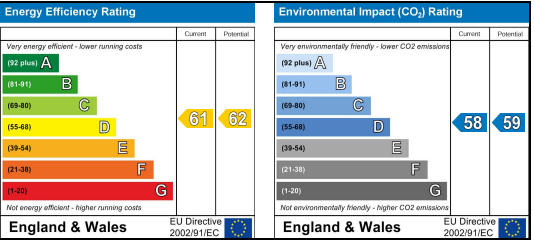
Floor Plan



Area Map



Energy Efficiency Graph



These particulars, whilst believed to be accurate are set out as a general outline only for guidance and do not constitute any part of an offer or contract. Intending purchasers should not rely on them as statements of representation of fact, but must satisfy themselves by inspection or otherwise as to their accuracy. No person in this firms employment has the authority to make or give any representation or warranty in respect of the property.