



Avenfield House

Park Lane, Mayfair, W1K 7AF

£800 Per Week

Spacious one bedroom (king size) apartment overlooking Park Lane and Hyde Park on the second floor of this sought after portered block in the heart of Mayfair.

The apartment overlooks Park Lane benefits from bright reception and semi open plan fitted kitchen, dual aspect e/s bathroom/wc, large double bedroom with ample wardrobe storage, communal heating and hot water included in rent.

Affording 24 hour porter and lifts. Only minutes' walk to Marble Arch station as well as Selfridges, Marks and Spencer; along the world renowned Oxford Street and Hyde Park Corner.

Offered Furnished. Available now for long let only..

Viewing

Please contact our Messila Residential Office on 020 7586 6699 if you wish to arrange a viewing appointment for this property or require further information.

- Double Bedroom with ample Wardrobes
- Second Floor with lifts
- Communal heating & HW.
- Portered Block
- Hyde Park/Marble Arch



1



1

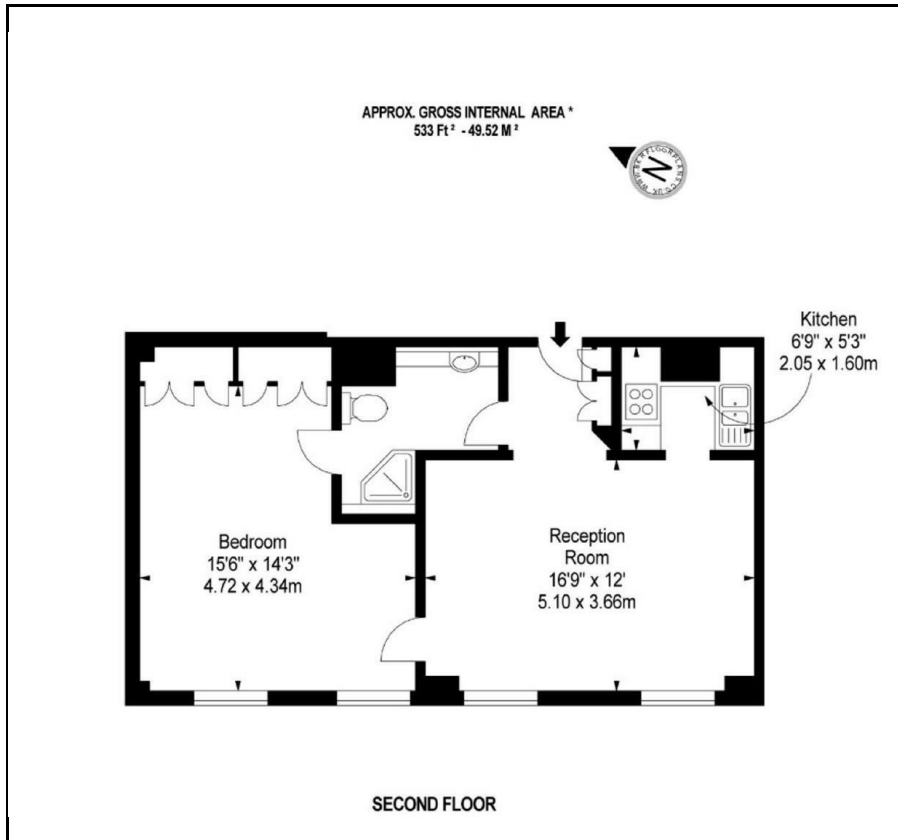


1



C

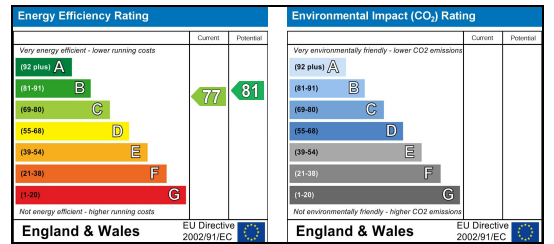
Floor Plan



Area Map



Energy Efficiency Graph



These particulars, whilst believed to be accurate are set out as a general outline only for guidance and do not constitute any part of an offer or contract. Intending purchasers should not rely on them as statements of representation of fact, but must satisfy themselves by inspection or otherwise as to their accuracy. No person in this firm's employment has the authority to make or give any representation or warranty in respect of the property.

Messila Residential

137 Park Road, London, NW8 7HT

T: 020 7586 6699 E regentspark@messilaresidential.com W: messilaresidential.com