



## Petty France , Victoria, SW1H 9ET

£745 Per Week

An excellent opportunity to rent out a very bright and spacious two double bedroom split level apartment with wonderful high ceilings situated on the first floor of this fine converted period Building.

The property is in a superb location, being 2 minutes walk to St James' Tube and 7-8 minutes walk to Victoria Station and all local amenities. The property comprises of bright and spacious living room with wood flooring and double glazing, open plan fitted kitchen and dining area, two double bedrooms, both with fitted wardrobes, and a recently fitted shower /WC. Independent Gas central heating .

This property is offered furnished will be available now for long letting.

- Two Double Bedrooms
- Fantastic Location
- Brand new furnishings
- High Ceilings
- Wooden Flooring
- Split Level

### Viewing

Please contact our Messila Residential Office on 020 7586 6699 if you wish to arrange a viewing appointment for this property or require further information.





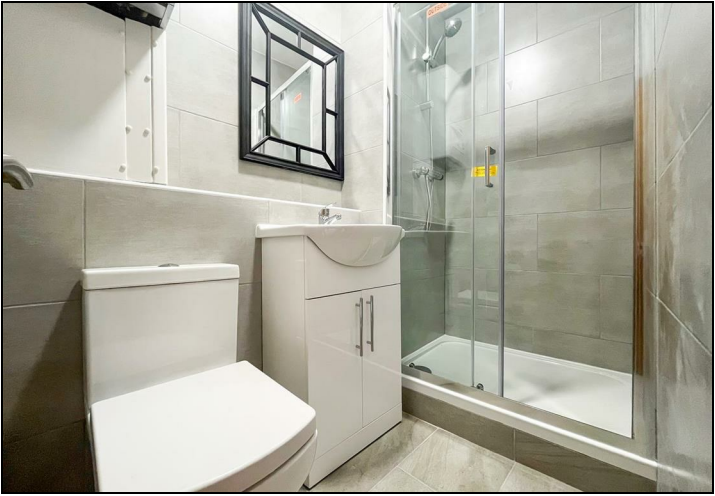
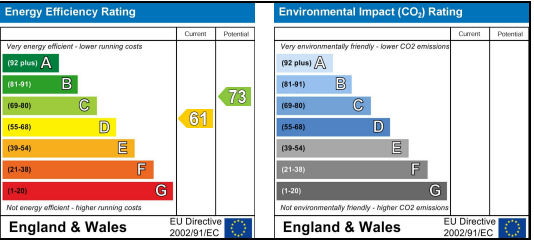
Floor Plan



Area Map



Energy Efficiency Graph



These particulars, whilst believed to be accurate are set out as a general outline only for guidance and do not constitute any part of an offer or contract. Intending purchasers should not rely on them as statements of representation of fact, but must satisfy themselves by inspection or otherwise as to their accuracy. No person in this firms employment has the authority to make or give any representation or warranty in respect of the property.