



## Goldhurst House

Fulham Reach, London, W6 9AN

£2,250 Per Week

An excellent three bedroom second floor apartment is located in the prestigious Goldhurst House, river facing position, it offers sensational south west facing views of the River Thames. Apartment comprises a spacious open plan reception/dining room and fully fitted state of the kitchen. A generous wrap around balcony surrounds the apartment and is accessed by all principle rooms. The apartment also comes with the added convenience of a parking space in the development's secure underground car park. Residence enjoy access to select private facilities including gymnasium, swimming pool, cinema screening room, wine storage and cinema screening room.

### Viewing

Please contact our Messila Residential Office on 020 7586 6699 if you wish to arrange a viewing appointment for this property or require further information.

- Three bedrooms
- Wrap around balcony
- 24 hour concierge
- Secure parking space
- Stunning river views
- Three Bathrooms



3



3

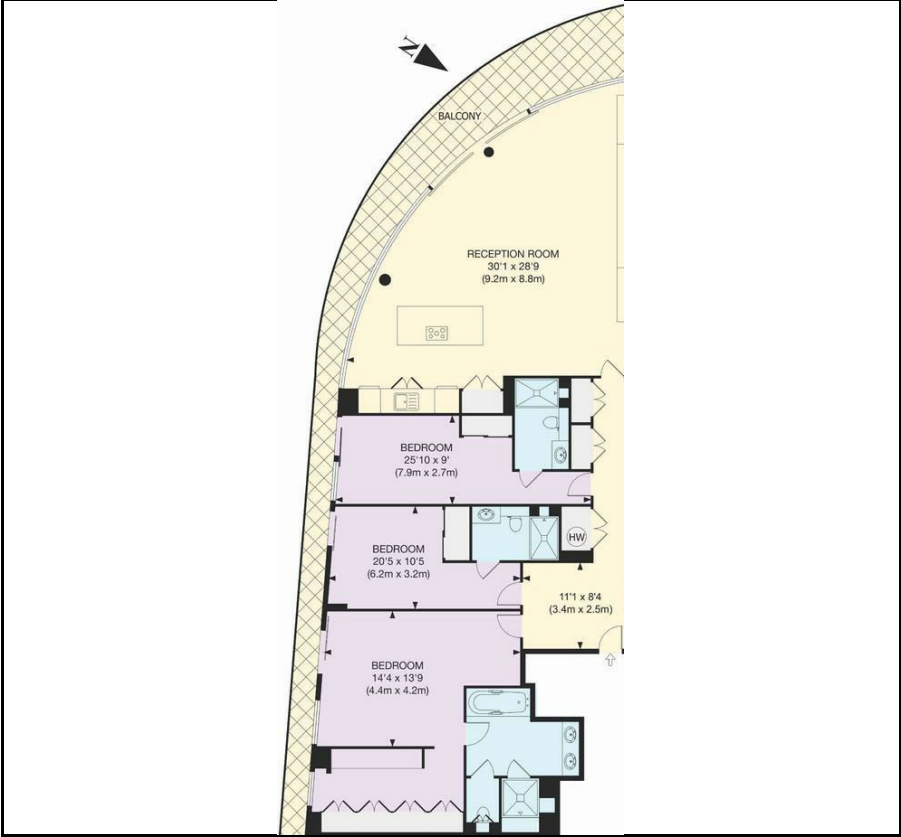


1



B

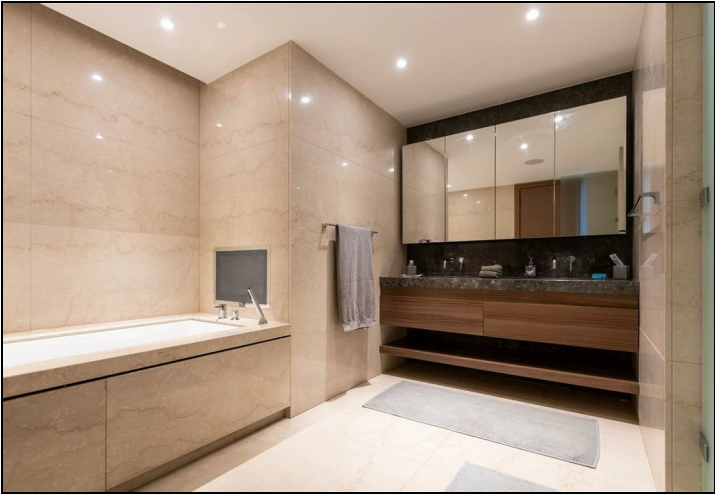
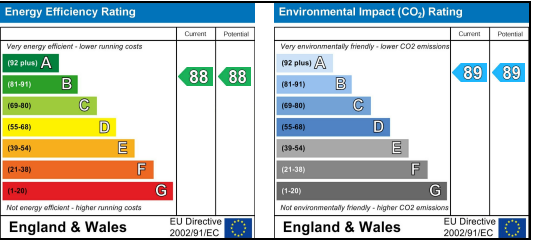
Floor Plan



Area Map



Energy Efficiency Graph



These particulars, whilst believed to be accurate are set out as a general outline only for guidance and do not constitute any part of an offer or contract. Intending purchasers should not rely on them as statements of representation of fact, but must satisfy themselves by inspection or otherwise as to their accuracy. No person in this firms employment has the authority to make or give any representation or warranty in respect of the property.