



Crown Passage

, Kingston Upon Thames, KT1 1JD

£425 Per Week

This is a stylish one double bedroom recently refurbished apartment situated in the heart of Kingston-upon-Thames. This fine property is located on the first floor with great views over the historic market square, affording charming fountains, ample high street and private stores, cafés/restaurants, With fine transport link and River Thames just a short walking distance.

The flat comprises of:- Bright and sunny reception room with two windows overlooking the square, open plan modern kitchen fitted with 'Bosch' appliances (DW and WM), bathroom/WC, double bedroom with windows and free standing wardrobe. The property also benefits from having modern furniture, wood flooring, secure video entry system, secondary glazing throughout.

The flat will be available from mid December for long letting and is offered furnished.

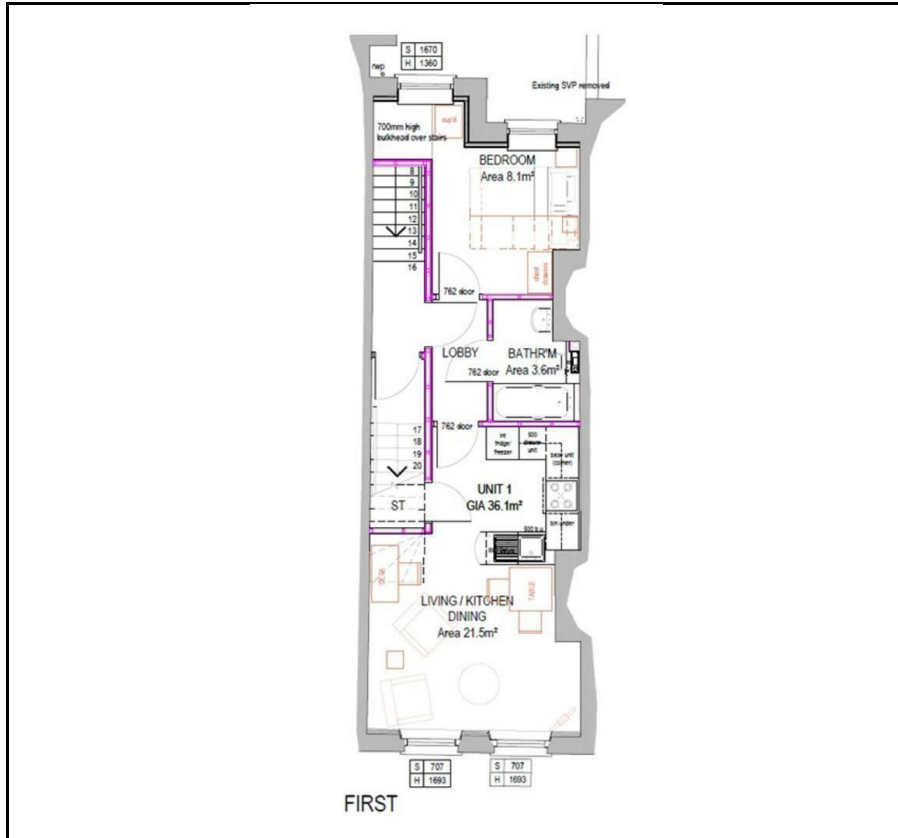
- Brand New Apartment
- One Double Bedroom
- First Floor
- In the town centre
- 5 minutes walk to station

Viewing

Please contact our Messila Residential Office on 020 7586 6699 if you wish to arrange a viewing appointment for this property or require further information.



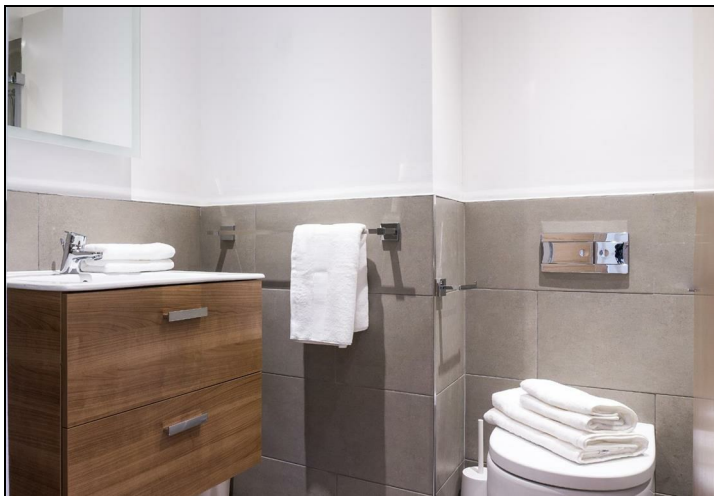
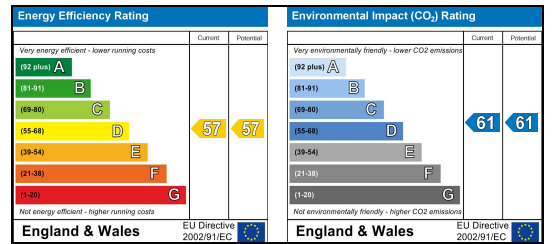
Floor Plan



Area Map



Energy Efficiency Graph



These particulars, whilst believed to be accurate are set out as a general outline only for guidance and do not constitute any part of an offer or contract. Intending purchasers should not rely on them as statements of representation of fact, but must satisfy themselves by inspection or otherwise as to their accuracy. No person in this firm's employment has the authority to make or give any representation or warranty in respect of the property.

Messila Residential

137 Park Road, London, NW8 7HT

T: 020 7586 6699 E: regentspark@messilaresidential.com W: messilaresidential.com