



Crown Passage

, Kingston Upon Thames, KT1 1JD

£425 Per Week

A stylish one double bedroom apartment situated in the heart of Kingston-upon-Thames Town Square.

This well presented property is located on the second floor (WALK UP) with beautiful views over the historic market square, with charming fountains, high street stores, green spaces and café's only a footstep away. This fine flat comprises of:- Entrance into a Bright and sunny reception room with large windows overlooking the square, open plan kitchen fitted with 'Bosch' appliances, small 'study area', fitted bathroom/WC, good sized double bedroom with wardrobes. The property also benefits from having modern furniture/furnishing, secure video entry system, wood flooring and secondary glazing throughout. This property will be available from early November, and is offered furnished.

Viewing

Please contact our Messila Residential Office on 020 7586 6699 if you wish to arrange a viewing appointment for this property or require further information.

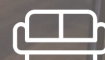
- One Double Bedroom
- Second Floor
- Views over the Square
- Close to the station,
- Video Entry



1



1

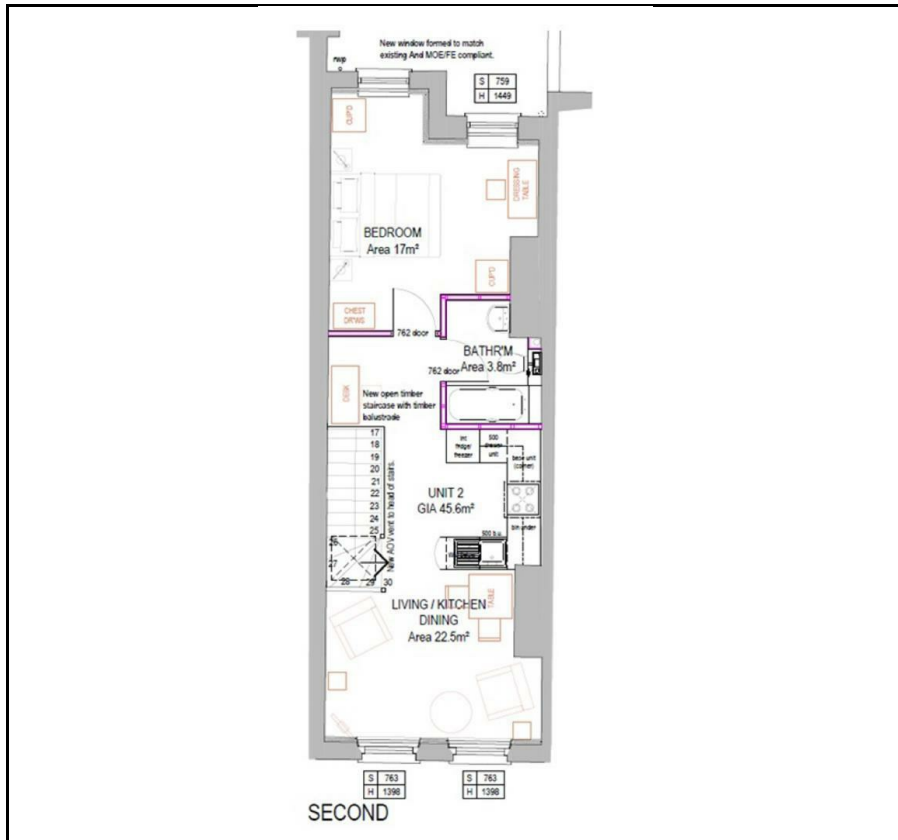


1



D

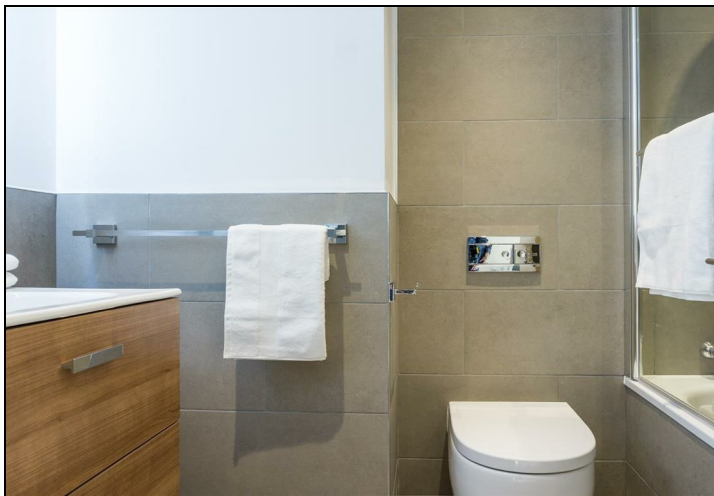
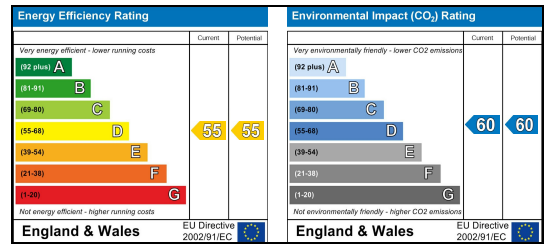
Floor Plan



Area Map



Energy Efficiency Graph



These particulars, whilst believed to be accurate are set out as a general outline only for guidance and do not constitute any part of an offer or contract. Intending purchasers should not rely on them as statements of representation of fact, but must satisfy themselves by inspection or otherwise as to their accuracy. No person in this firm's employment has the authority to make or give any representation or warranty in respect of the property.

Messila Residential

137 Park Road, London, NW8 7HT

T: 020 7586 6699 E regentspark@messilaresidential.com W: messilaresidential.com