



## Lyndhurst Court

St Johns Wood, NW8 6EU

£395 Per Week

An excellent studio apartment on the fourth floor (With Lift) of a secure portered block moments from St John's Wood and Swiss Cottage tube station.

The flat benefits from having large bright windows, tons of storage and is well furnished and decorated throughout. Affording, double bed, desk and chairs and full range of fitted wardrobe with open plan kitchen. fitted appliances and ample storage. RENT includes of communal heating and HW., plus Thames water bill.

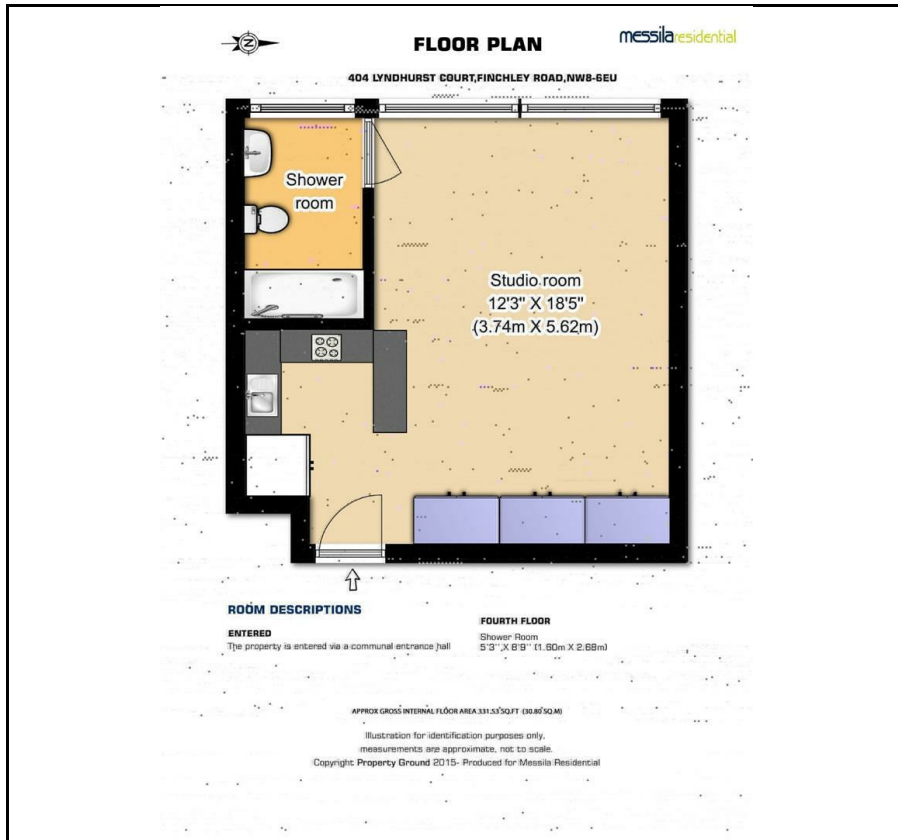
This property would work well for students, professionals. St John's Wood underground is just a short walking distance away. Offered furnished. Available now for 1 year (or longer) with option to break.

### Viewing

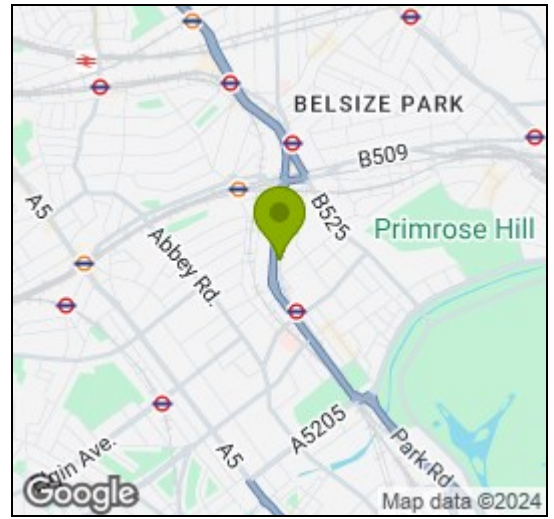
Please contact our Messila Residential Office on 020 7586 6699 if you wish to arrange a viewing appointment for this property or require further information.

- Studio Apartment
- Fourth Floor
- Large and Bright
- Bills including hot water and heating
- Porter
- Lift
- Furnished
- Portered
- Close to Both St Johns Wood/Swiss Cottage Station

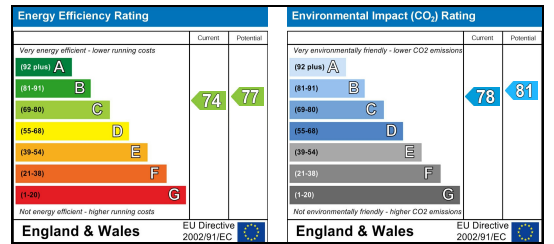
## Floor Plan



## Area Map



## Energy Efficiency Graph



These particulars, whilst believed to be accurate are set out as a general outline only for guidance and do not constitute any part of an offer or contract. Intending purchasers should not rely on them as statements of representation of fact, but must satisfy themselves by inspection or otherwise as to their accuracy. No person in this firm's employment has the authority to make or give any representation or warranty in respect of the property.

### Messila Residential

137 Park Road, London, NW8 7HT

T: 020 7586 6699 E: regentspark@messilaresidential.com W: messilaresidential.com