



## Lyndhurst Court

Finchley Road, London, NW8 6EX

£925 Per Week

ONLY suitable for family rental and or 2 sharers.

This bright and extremely spacious three bedroom family apartment affording smart wooden flooring throughout, fitted kitchen and bathroom and with newly installed contemporary, modern and stylish furnishings. This excellent eighth floor (with lift) property comprises of:- welcoming entrance hallway, guest WC and plenty of storage, large separate kitchen with fitted appliances, reception/dining room with stunning views over west London and the City leading onto private balcony. Two excellent sized double bedrooms, each with fitted wardrobes, third bedroom / study, family bathroom/Wc and guest WC. The property also benefits from having Communal heating and hot water; as well as Thames water bill; porter at reception (daytime), lift access, FCFS parking, within 5 mins walk to St John's Wood High Street and underground station, also easy reach to Fincheley Road's O2 shopping centre with Waitrose, Virgin active, Cinema and range of cafe & restaurants. The property is offered furnished and will be available NOW for Long Letting.

- Bright and Stylish
- Three Double Bedrooms
- Bathroom/WC
- Guest Wc
- Wooden Flooring
- Lifts
- Day Porter
- Communal Heating & Hotwater
- Private Balcony
- Minutes to Tube

### Viewing

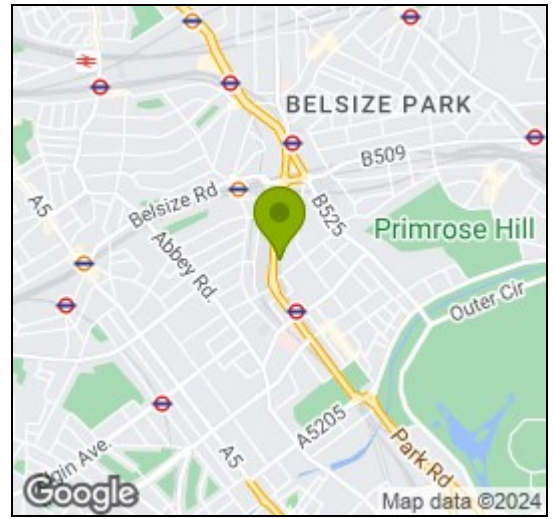
Please contact our Messila Residential Office on 020 7586 6699 if you wish to arrange a viewing appointment for this property or require further information.



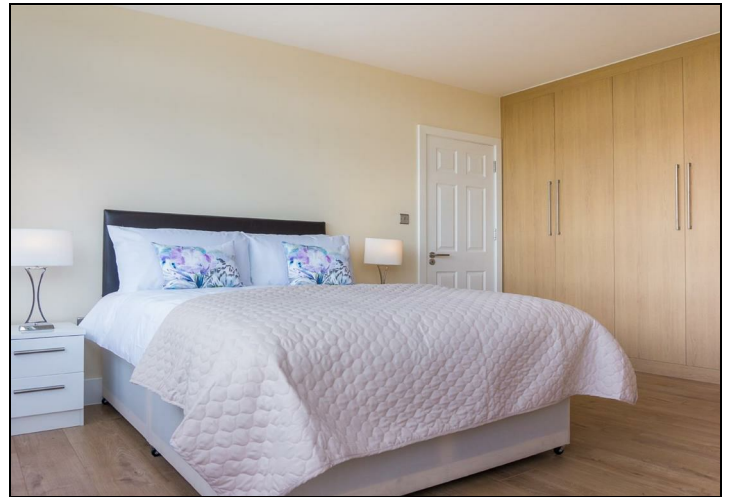
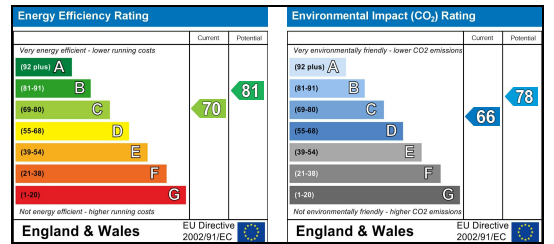
## Floor Plan



## Area Map



## Energy Efficiency Graph



These particulars, whilst believed to be accurate are set out as a general outline only for guidance and do not constitute any part of an offer or contract. Intending purchasers should not rely on them as statements of representation of fact, but must satisfy themselves by inspection or otherwise as to their accuracy. No person in this firm's employment has the authority to make or give any representation or warranty in respect of the property.

### Messila Residential

137 Park Road, London, NW8 7HT

T: 020 7586 6699 E regentspark@messilaresidential.com W: messilaresidential.com