



Fursecroft

George Street, Marylebone, W1H 5LG

£1,500 Per Week

A spacious four double bedroom, three bathroom apartment situated on the ninth (top) floor of this popular mansion block, with great view over London.

The property comprises of:- Welcoming entrance Hallway, separate fitted kitchen, study/dining room, bright reception room, four large double bedrooms with ample storage, three bathrooms/WC, guest cloakroom.

The Building benefits from having lift access, 24 hour porter, communal heating and hot water.

The property is well located being only 5 minutes walk to Oxford Street, Marble Arch, Hyde Park and easy walking distance to Marylebone High street and Regent's Park (Baker street).

Ideal family flat and great for sharing.

Available end of JULY for long let only.

- Four Bedrooms
- Three Bathrooms
- Ninth Floor
- 24 Hour Porter
- Lift and
- Communal heating and HW
- Wooden Floors

Viewing

Please contact our Messila Residential Office on 020 7586 6699 if you wish to arrange a viewing appointment for this property or require further information.



4



3

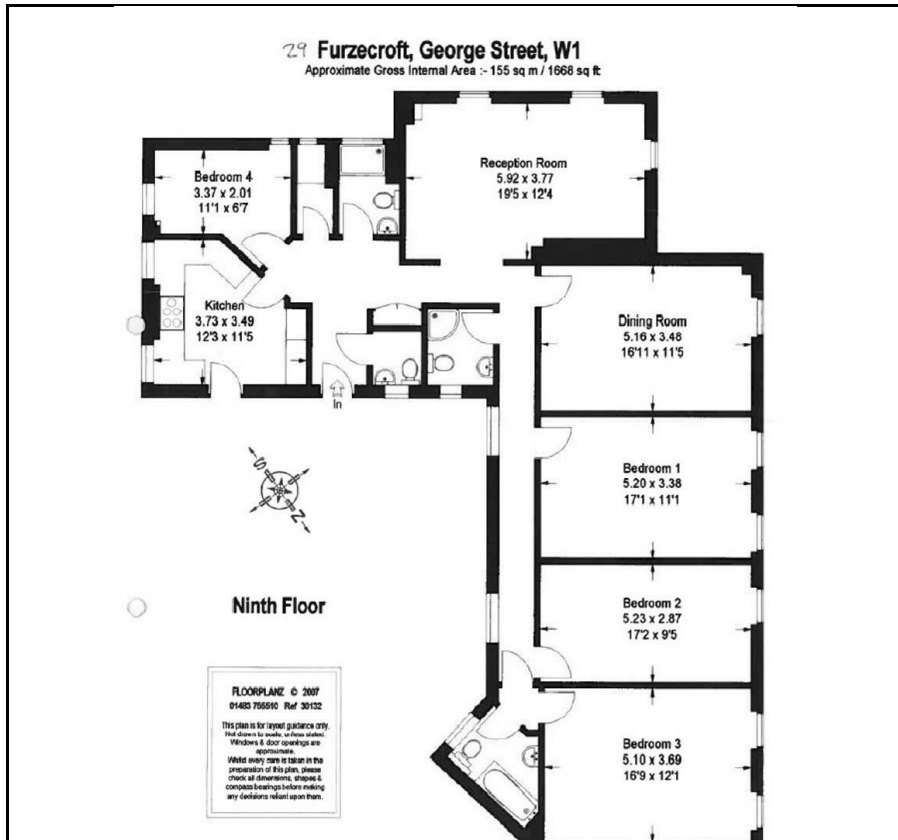


2



9

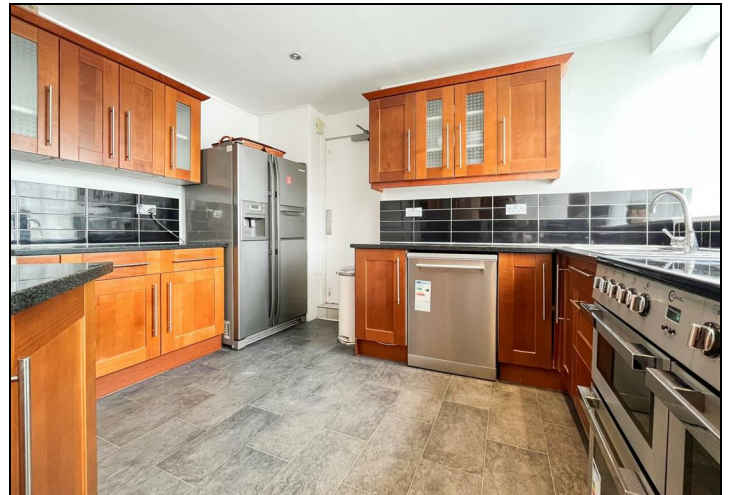
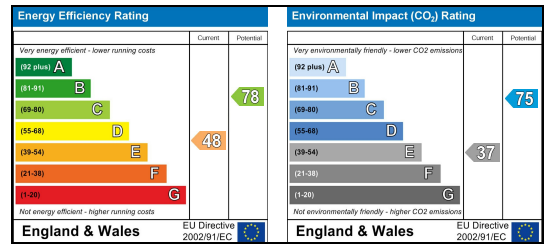
Floor Plan



Area Map



Energy Efficiency Graph



These particulars, whilst believed to be accurate are set out as a general outline only for guidance and do not constitute any part of an offer or contract. Intending purchasers should not rely on them as statements of representation of fact, but must satisfy themselves by inspection or otherwise as to their accuracy. No person in this firm's employment has the authority to make or give any representation or warranty in respect of the property.

Messila Residential

137 Park Road, London, NW8 7HT

T: 020 7586 6699 E: regentspark@messilaresidential.com W: messilaresidential.com