



## The Water Gardens

Burwood Place, Hyde Park, W2 2DJ

£650 Per Week

A bright two double bedroom spacious apartment on the fourth floor (with Lifts) of this well maintained portered gated block with views over the communal gardens. The property benefits from entrance hall, large sunny reception room, separate fitted kitchen, two double bedrooms, bathroom/WC, wooden flooring through out, 24 hour porter, lift and within close proximity to Paddington Station, Hyde Park /Marble Arch and Oxford Street.

The property is offered FURNISHED and is available NOW for long letting.

Ideal flat for a small family or two sharers

- Two doubles
- Wooden Flooring
- Lift
- Separate Kitchen
- Communal Gardens
- Close to Paddington

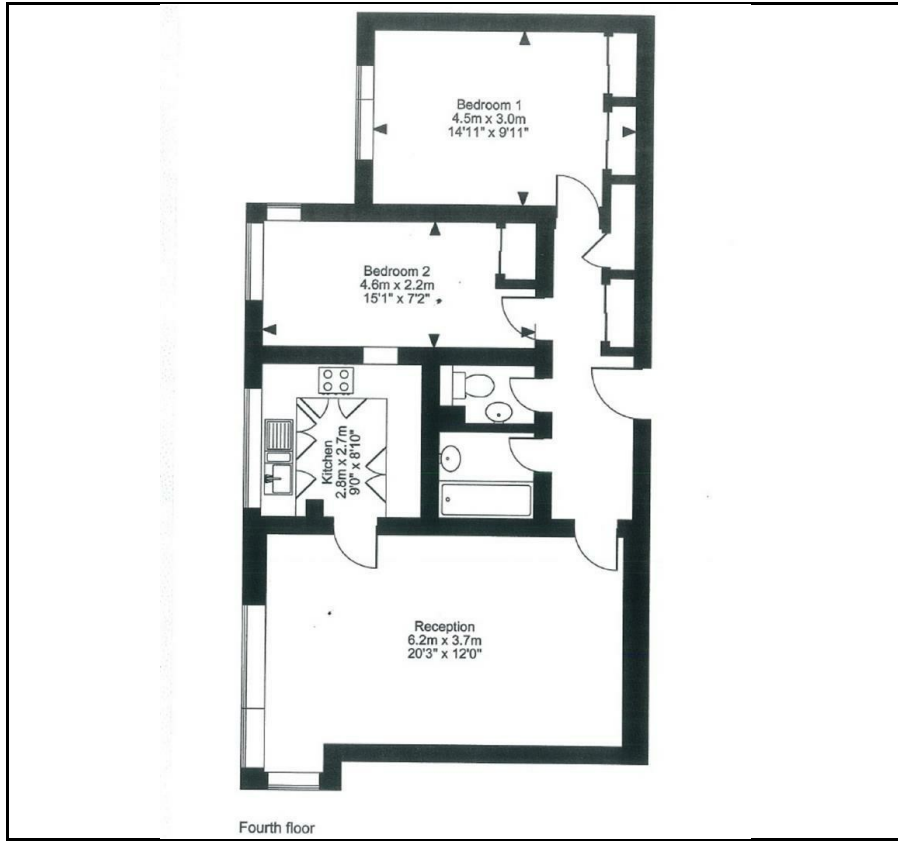
### Viewing

Please contact our Messila Residential Office on 020 7586 6699 if you wish to arrange a viewing appointment for this property or require further information.





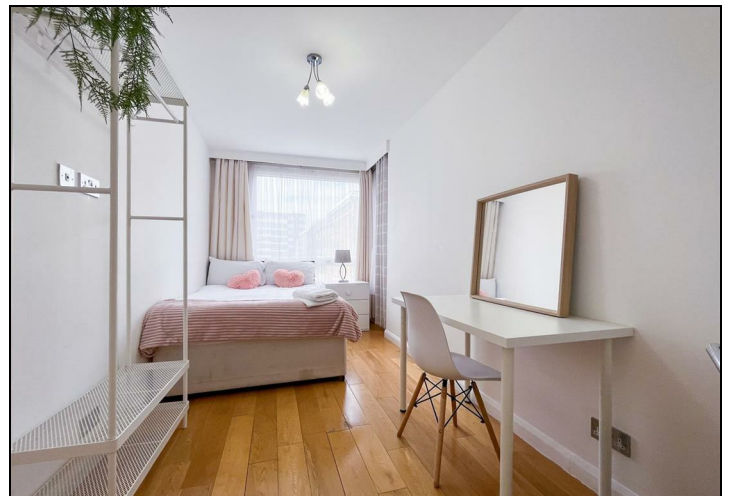
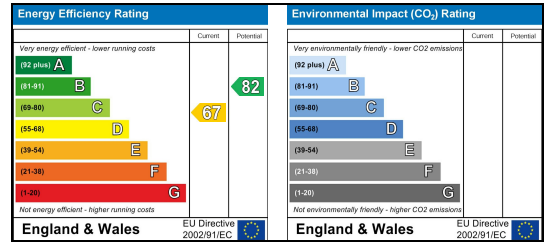
## Floor Plan



## Area Map



## Energy Efficiency Graph



These particulars, whilst believed to be accurate are set out as a general outline only for guidance and do not constitute any part of an offer or contract. Intending purchasers should not rely on them as statements of representation of fact, but must satisfy themselves by inspection or otherwise as to their accuracy. No person in this firm's employment has the authority to make or give any representation or warranty in respect of the property.

### Messila Residential

137 Park Road, London, NW8 7HT

T: 020 7586 6699 E regentspark@messilaresidential.com W: messilaresidential.com