



Stuart Tower

Maida Vale, W9 1UH

£525 Per Week

This is a bright and spacious one double bedroom apartment, that is situated on the twelfth floor of this popular smart refurbished portered building. The property comprises of:- Entrance hallway with plenty of storage, bright reception room with sliding patio doors leading out onto a private terrace, separate fitted kitchen, large double bedroom and bathroom/WC. This property is close to both Maida Vale Station and Warwick Avenue Station. Affording ample storage and wooden flooring throughout, with 24 hour porter and lifts access. The flat is available early August for long let and is offered Furnished,

- One Double Bedroom
- Reception
- 12th Floor
- 24 Hour Porter
- Lifts access
- Private Balcony
- Separate Kitchen
- Wood floor thru out

Viewing

Please contact our Messila Residential Office on 020 7586 6699 if you wish to arrange a viewing appointment for this property or require further information.



1



1

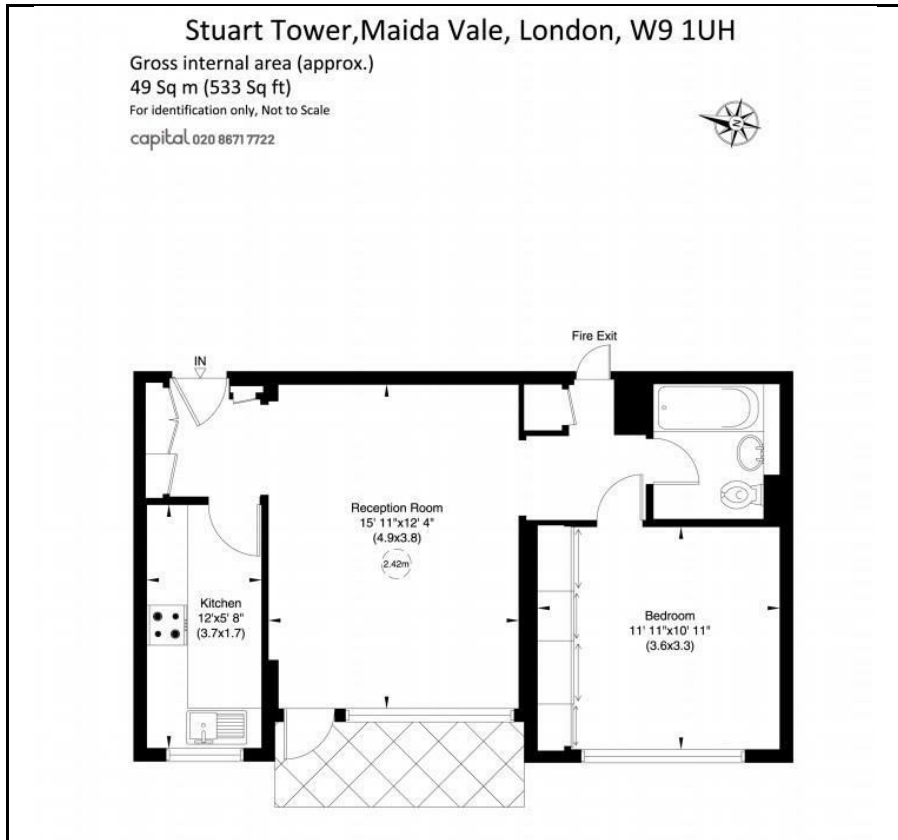


1



D

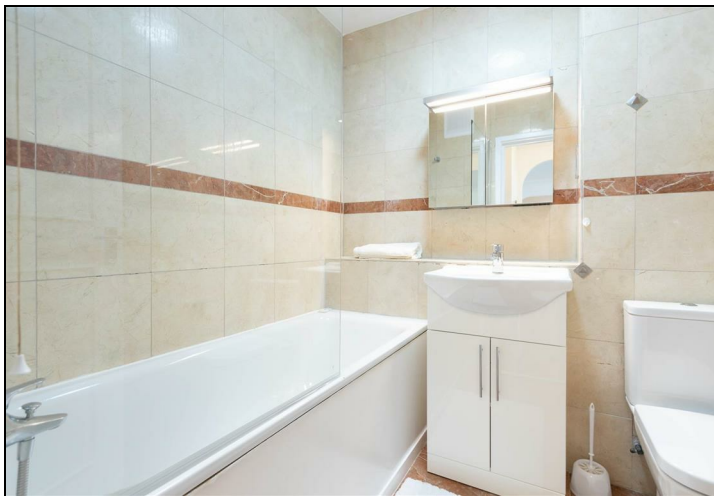
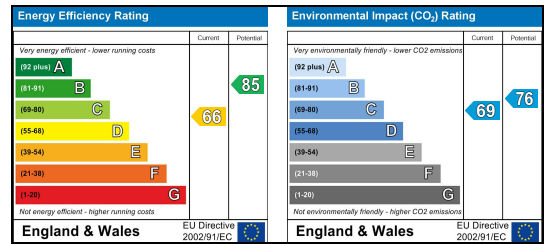
Floor Plan



Area Map



Energy Efficiency Graph



These particulars, whilst believed to be accurate are set out as a general outline only for guidance and do not constitute any part of an offer or contract. Intending purchasers should not rely on them as statements of representation of fact, but must satisfy themselves by inspection or otherwise as to their accuracy. No person in this firm's employment has the authority to make or give any representation or warranty in respect of the property.

Messila Residential

137 Park Road, London, NW8 7HT

T: 020 7586 6699 E: regentspark@messilaresidential.com W: messilaresidential.com