



Thames City

Carnation Way, Nine Elms, SW8 5GZ

£1,395 Per Week

A stunning three double bedroom apartment located within one of London's most luxurious new developments, with a host a fabulous amenities. The apartment is situated on the second floor with floor to ceiling windows in all rooms, the property comprises of, impressive entrance hall,, leading to a spacious open plan living space with a state of the art kitchen and luxury furnishings throughout, master bedroom with en-suite marble bathroom and separate shower area, two further double bedrooms and second bathroom. The property benefits form having air conditioning, real wooden flooring. Residents can also enjoy the wealth of amenities including, 30m indoor swimming pool, private spa and huge state of the art gym, sky gardens, bar and restaurant. This property is available now and is offered furnished.

- Three Double Bedrooms
- Two Bathrooms
- Fully Furnished
- Brand New Development
- 24 Hour Conceierge
- 30M Swimming Pool
- Excellent Transport links

Viewing

Please contact our Messila Residential Office on 020 7586 6699 if you wish to arrange a viewing appointment for this property or require further information.



3



2

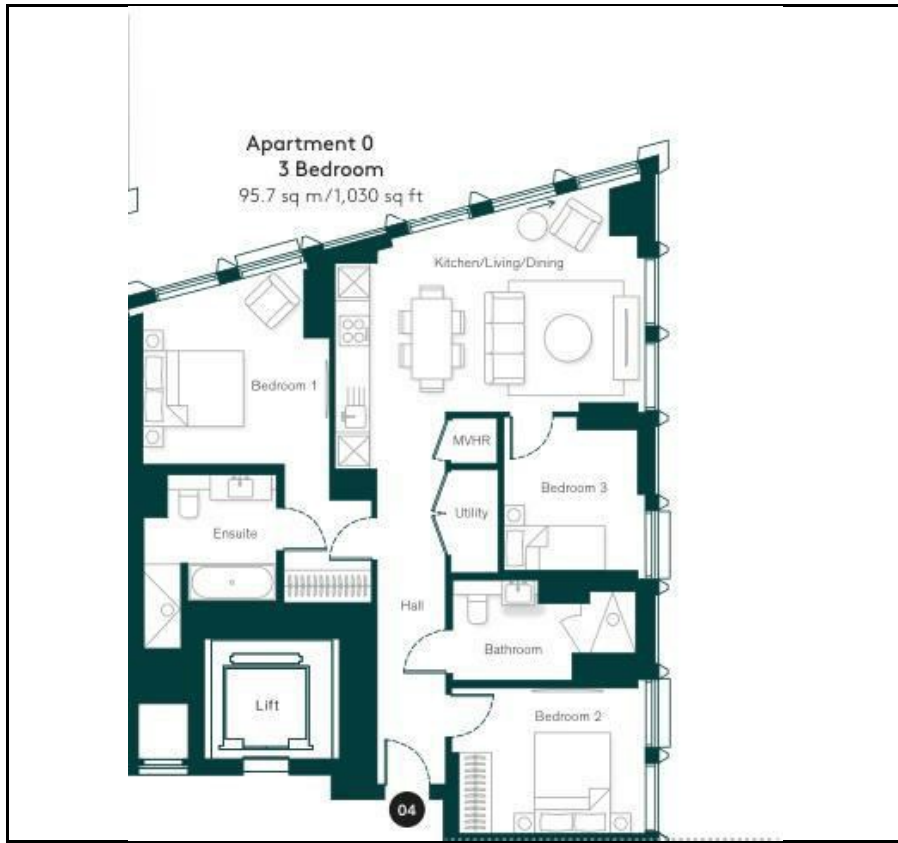


1

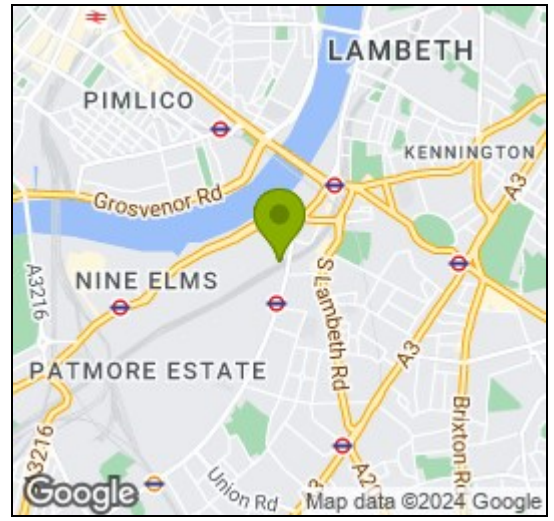


B

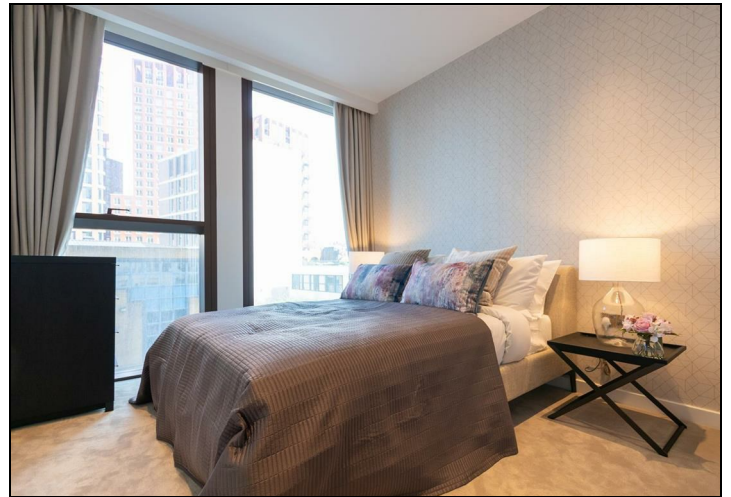
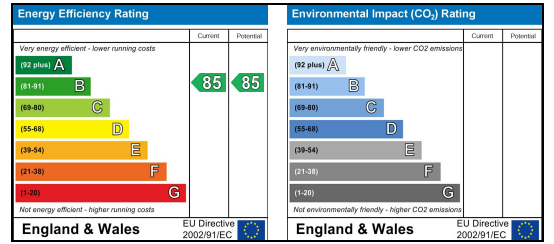
Floor Plan



Area Map



Energy Efficiency Graph



These particulars, whilst believed to be accurate are set out as a general outline only for guidance and do not constitute any part of an offer or contract. Intending purchasers should not rely on them as statements of representation of fact, but must satisfy themselves by inspection or otherwise as to their accuracy. No person in this firm's employment has the authority to make or give any representation or warranty in respect of the property.

Messila Residential

137 Park Road, London, NW8 7HT

T: 020 7586 6699 E: regentspark@messilaresidential.com W: messilaresidential.com