



Carrington House

Hertford Street, Mayfair, W1J 7RG

£575 Per Week

This is a great sized well presented one bedroom apartment on the RAISED GROUND FLOOR of a much sought after portered building in the heart of Mayfair close to all excellent central London has to offer.

This fine flat comprises of:- Entrance hallway, reception room, separate fitted kitchen, double bedroom with wardrobe, shower/WC. The property also benefits from having:- 24 hour porter, wooden flooring and rental includes the cost of communal heating and hot water.

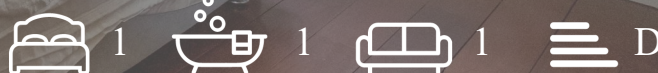
Located conveniently for Hyde Park, Park Lane, Curzon Street and Green Park.

Available NOW for long let only.

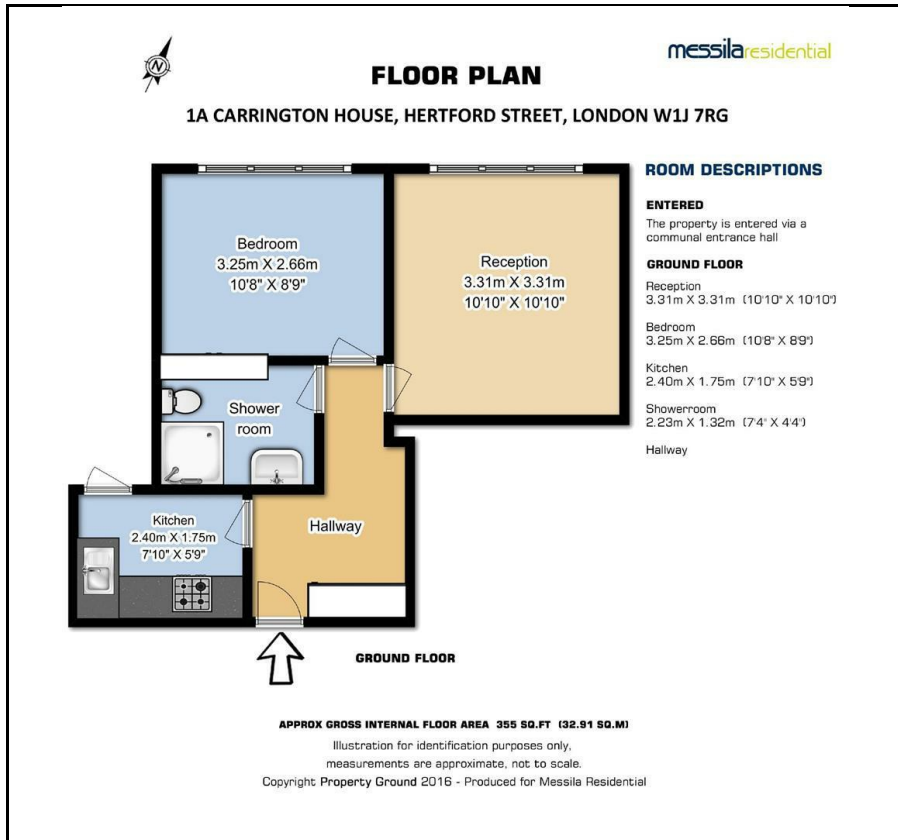
- One Double Bedroom Apt
- Raised Ground Floor
- Separate fitted Kitchen
- Wooden Flooring
- Includes Heating & Hot Water
- 24 hrs portorage
- Close to Hyde Park and
- Green Park tube nearby

Viewing

Please contact our Messila Residential Office on 020 7586 6699 if you wish to arrange a viewing appointment for this property or require further information.



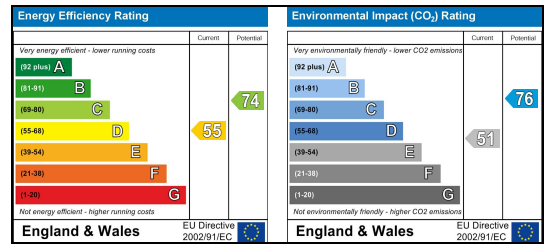
Floor Plan



Area Map



Energy Efficiency Graph



These particulars, whilst believed to be accurate are set out as a general outline only for guidance and do not constitute any part of an offer or contract. Intending purchasers should not rely on them as statements of representation of fact, but must satisfy themselves by inspection or otherwise as to their accuracy. No person in this firm's employment has the authority to make or give any representation or warranty in respect of the property.

Messila Residential

137 Park Road, London, NW8 7HT

T: 020 7586 6699 E: regentspark@messilaresidential.com W: messilaresidential.com