



## Langford Court

Abbey Road, St John's Wood, NW8 9DN

£485 Per Week

This is a bright and quiet apartment with double aspect (double glazing) windows, having a separate fitted kitchen and shower room with windows, The flat is situated on the Third floor (with LIFTS) of this popular residential portered (daytime only) building located right in the heart of St John's Wood close to the world renowned 'Abbey Road' crossing and easy walking distance to Maida Vale tube.

This fine apartment comprises of:- Entrance hallway with storage, separate fitted kitchen, living room bright outlook with 2 windows, shower/WC., double aspect large bedroom with fitted wardrobes. Wood flooring in principle rooms.

The flat is approximately 1 minute to American School in London and 6 minutes walk to St John's Wood underground station (Jubilee line).

Rent inclusive of Communal Heating and Hot water. Day time porter at reception.

Available Furnished from NOW for long letting.

- Double bedroom
- Brand new Shower/Wc
- Reception Room
- Modern separate Kitchen
- Wood flooring
- Day Porter
- Communal HTG & HW.

### Viewing

Please contact our Messila Residential Office on 020 7586 6699 if you wish to arrange a viewing appointment for this property or require further information.



1



1

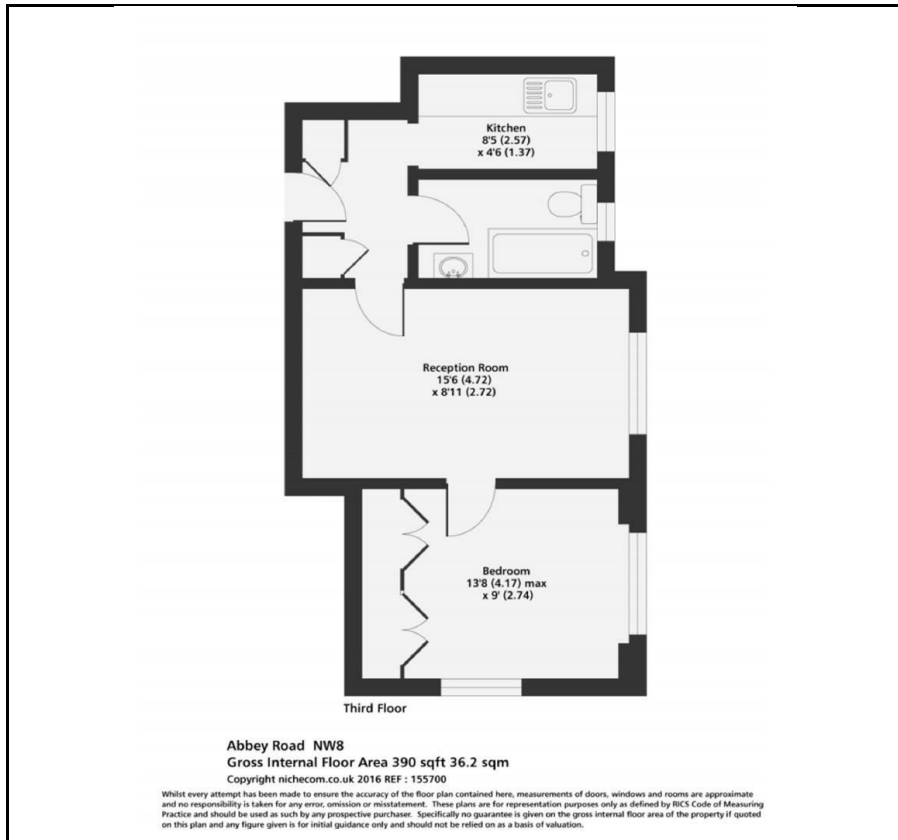


1

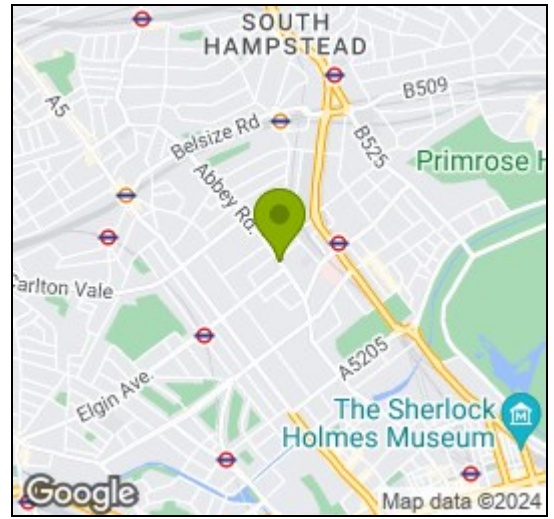


D

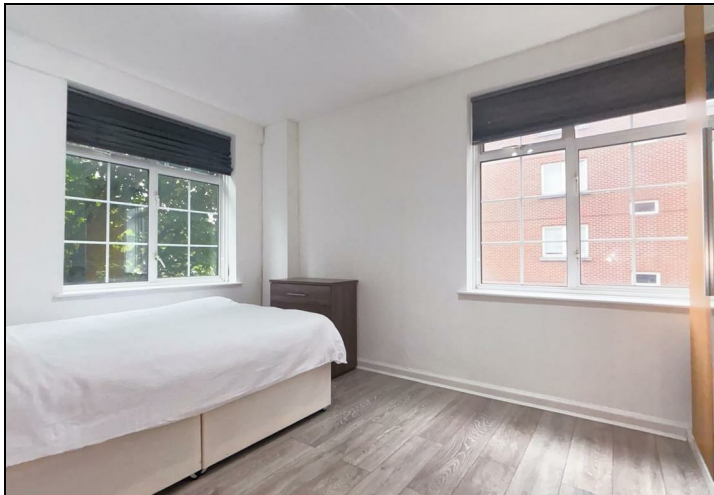
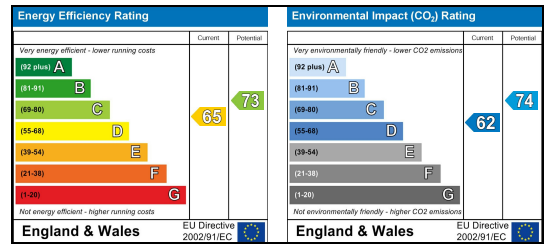
## Floor Plan



## Area Map



## Energy Efficiency Graph



These particulars, whilst believed to be accurate are set out as a general outline only for guidance and do not constitute any part of an offer or contract. Intending purchasers should not rely on them as statements of representation of fact, but must satisfy themselves by inspection or otherwise as to their accuracy. No person in this firm's employment has the authority to make or give any representation or warranty in respect of the property.

### Messila Residential

137 Park Road, London, NW8 7HT

T: 020 7586 6699 E regentspark@messilaresidential.com W: messilaresidential.com