



## Regent Court

1 North Bank, St John's Wood, NW8 8UW

£845 Per Week

KINDLY NOTE : Flat is ONLY for family rental and/OR TWO persons sharing - ideal for LBS sharers.

This is a well presented spacious TWO double bedroom modern home in a popular residential building.

This apartment is situated on the second floor of a private residential development that is located within 10 mins walk of both St John's Wood and Baker Street stations.

This fine flat comprises of:- Entrance hallway with plenty of storage, two good sized bedrooms (master with en-suite shower/WC.) and ample fitted wardrobes. Additional modern shower/WC, Stylish reception room with dining area benefitting from having sliding balcony doors leading out onto a south facing private balcony overlooking the communal gardens, semi-open plan fitted kitchen with large window. The property also benefits from having as large TV /Study room, stone/wooden flooring throughout, gas heating, a secure allocated parking space, 24 hour porter, on-site gymnasium.

The flat is offered furnished and is available from NOW for long letting.

Very close to Regents Park, London Business school and great flat for 2 sharers OR 3 related renters.

- Two Double Bedrooms
- Two Bathrooms
- Second Floor with lifts
- Private balcony
- Secure Parking Space
- 24 Hours Porter

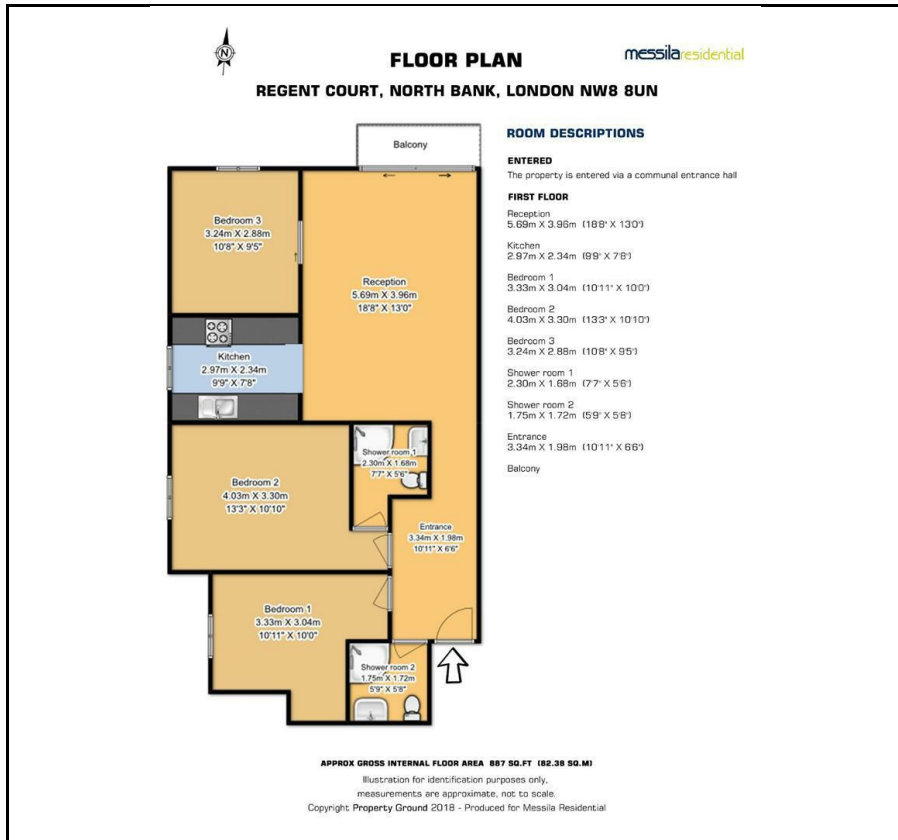
### Viewing

Please contact our Messila Residential Office on 020 7586 6699 if you wish to arrange a viewing appointment for this property or require further information.





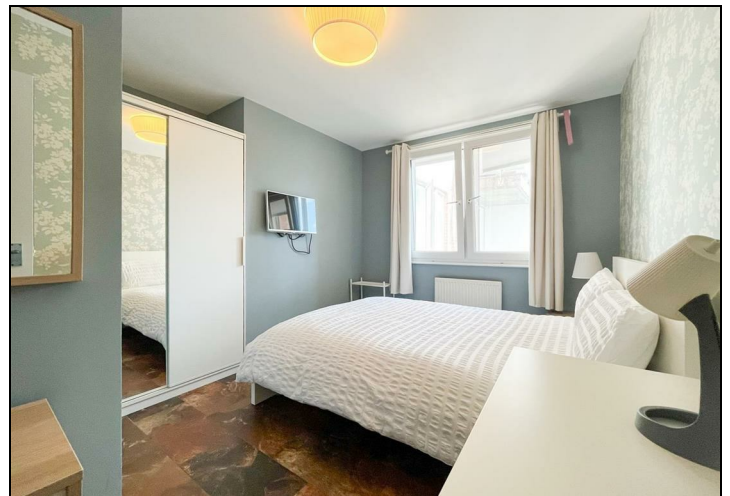
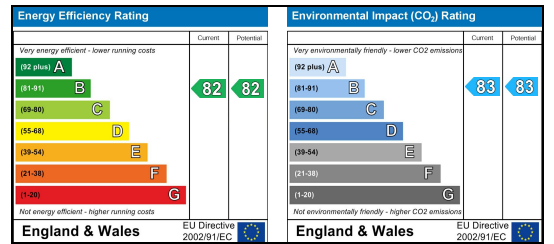
# Floor Plan



# Area Map



# Energy Efficiency Graph



These particulars, whilst believed to be accurate are set out as a general outline only for guidance and do not constitute any part of an offer or contract. Intending purchasers should not rely on them as statements of representation of fact, but must satisfy themselves by inspection or otherwise as to their accuracy. No person in this firm's employment has the authority to make or give any representation or warranty in respect of the property.

**Messila Residential**

137 Park Road, London, NW8 7HT

T: 020 7586 6699 E: regentspark@messilaresidential.com W: messilaresidential.com