



## Regent Court

North bank, St John's Wood, NW8 8UW

£925 Per Week

A bright and spacious refurbished three double bedroom apartment offering excellent living space.

The property is situated on the FOURTH floor (with lifts) of this 24 hour portered residential building with secure allocated parking and in house Gym. Within easy walking distance to/from St John's Wood and Baker Street underground station, as well as local bus routes on Park Road (east side of Regent's Park). The world renowned Lords Cricket Ground is just a stone's throw away.

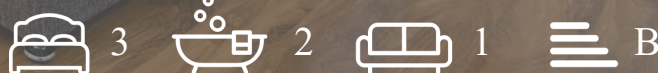
This fine property comprises of:- large entrance Hallway with ample storage cupboards, lovely lounge with semi open plan fitted kitchen with large patio doors leading out onto private south facing balcony, three double bedrooms, ensuite shower/WC., second shower/WC.

The property is offered furnished ideal for FAMILY and/or 3 PERSONS sharing, will be available from mid/end of JUNE for long let only (with break option).

- Three Double Bedrooms
- Two Bathrooms
- Fourth Floor
- Secure Parking
- Lift
- 24 Hour Porter
- Gym
- Balcony

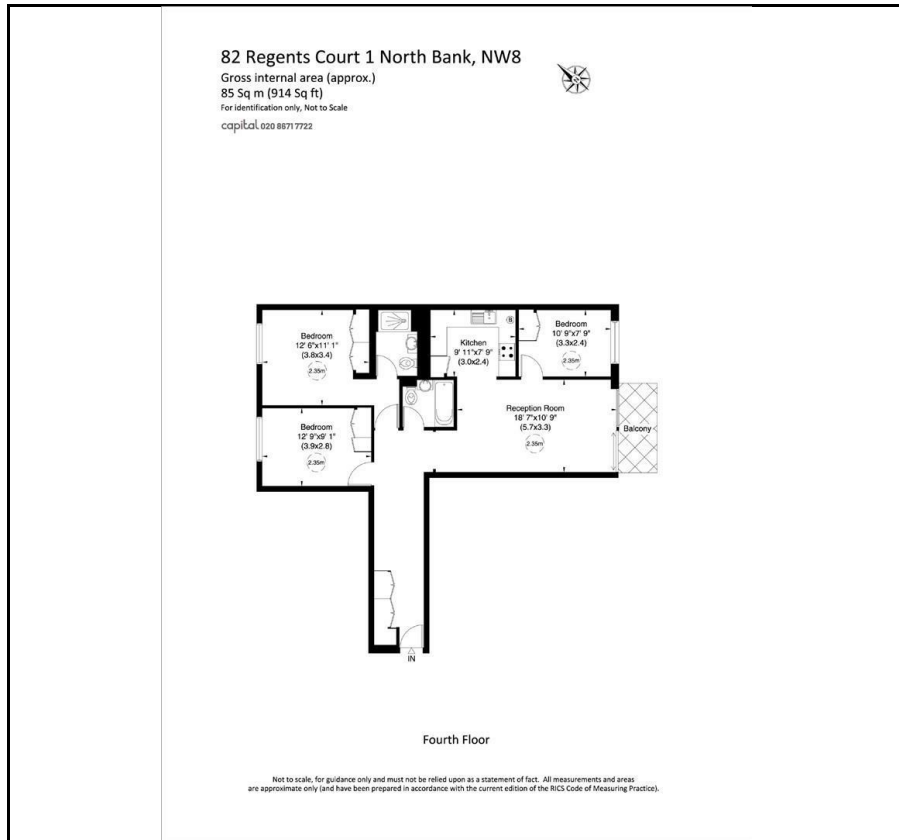
### Viewing

Please contact our Messila Residential Office on 020 7586 6699 if you wish to arrange a viewing appointment for this property or require further information.

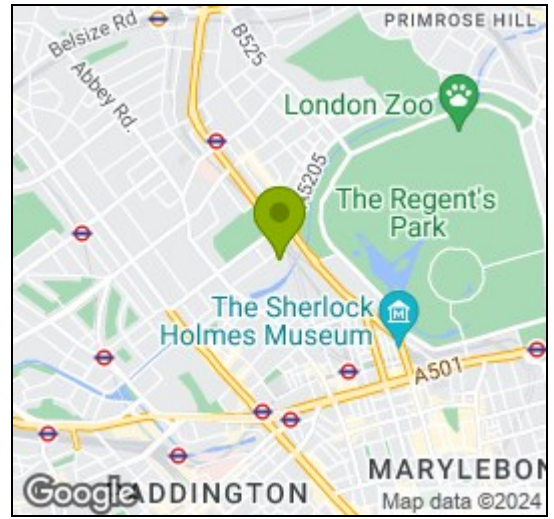




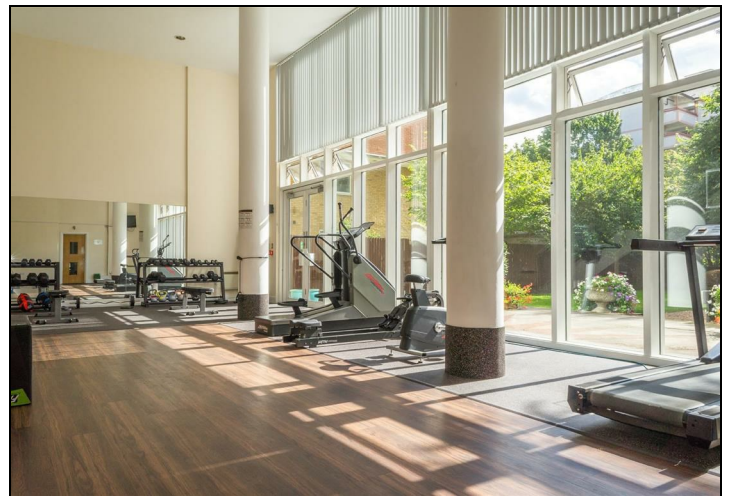
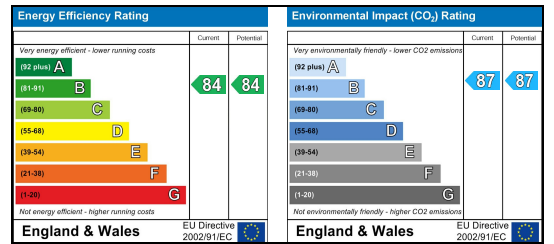
## Floor Plan



## Area Map



## Energy Efficiency Graph



These particulars, whilst believed to be accurate are set out as a general outline only for guidance and do not constitute any part of an offer or contract. Intending purchasers should not rely on them as statements of representation of fact, but must satisfy themselves by inspection or otherwise as to their accuracy. No person in this firm's employment has the authority to make or give any representation or warranty in respect of the property.

### Messila Residential

137 Park Road, London, NW8 7HT

T: 020 7586 6699 E: regentspark@messilaresidential.com W: messilaresidential.com