



## Hamilton House

, St John's Wood, NW8 9PN

£810 Per Week

Situated on the first floor of this desirable modern purpose built block affording 24 hrs portorage, communal heating and hot water, as well as a delightful common garden; within easy reach of St Johns wood high street and underground station. The property provides spacious reception/dining room with large doors onto a delightful terrace can have a table for 6 for alfresco dining, gallery fitted kitchen, two excellent sized double bedrooms (master with en-suite) second bathroom room and guest wc.

Property is offered unfurnished and is available now for long letting.

- First Floor
- Two Double Bedrooms
- Two Bathrooms
- 24 Hour Concierge
- Communal Gardens
- Wooden Flooring

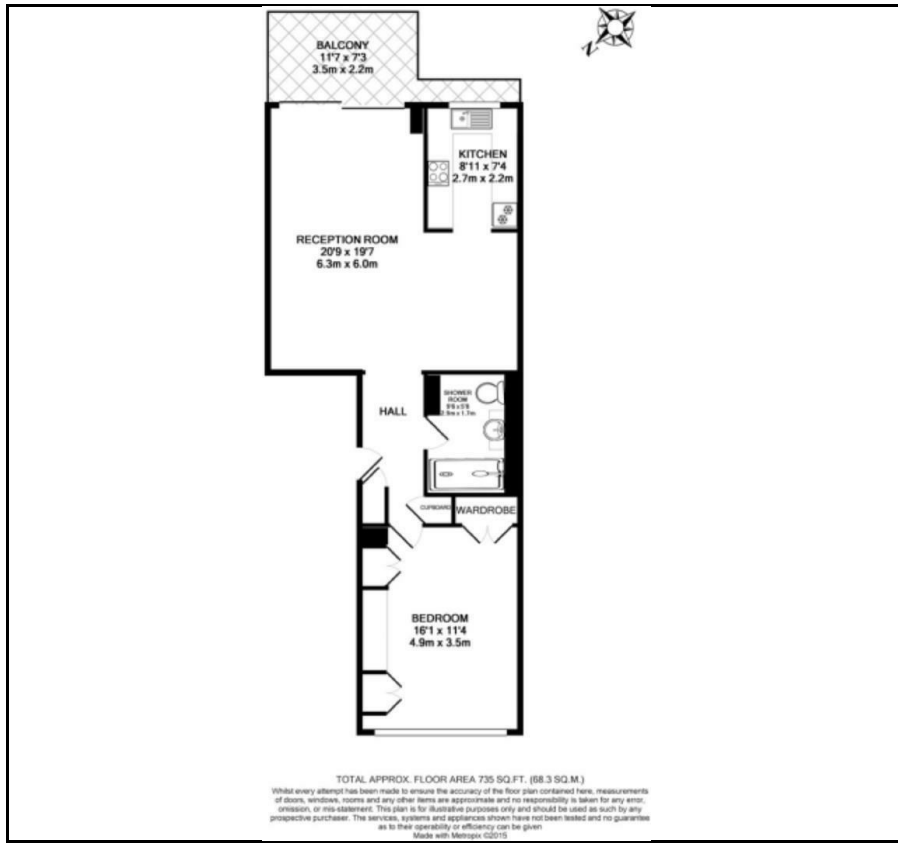
### Viewing

Please contact our Messila Residential Office on 020 7586 6699 if you wish to arrange a viewing appointment for this property or require further information.





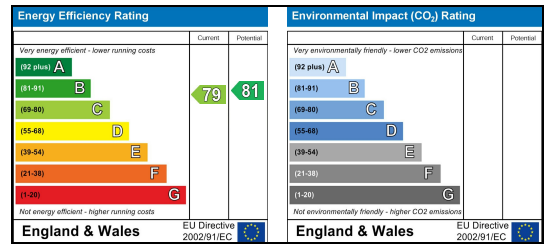
## Floor Plan



## Area Map



## Energy Efficiency Graph



These particulars, whilst believed to be accurate are set out as a general outline only for guidance and do not constitute any part of an offer or contract. Intending purchasers should not rely on them as statements of representation of fact, but must satisfy themselves by inspection or otherwise as to their accuracy. No person in this firm's employment has the authority to make or give any representation or warranty in respect of the property.

**Messila Residential**

137 Park Road, London, NW8 7HT

T: 020 7586 6699 E regentspark@messilaresidential.com W: messilaresidential.com