



Oswald Building

Chelsea Bridge Wharf, Battersea, SW8 4NU

£1,000 Per Week

A stunning duplex penthouse apartment located on the eighth and ninth floors of this prestigious riverside development, benefitting from direct river views from all major rooms, and a secure underground parking space.

This fine flat comprises of:- Entrance hallway with guest WC and plenty of storage space, spacious reception/dining area with floor to ceiling windows and access to private terrace overlooking Battersea Park and the river Thames. Curved feature staircase leads up to two double bedroom suites, (each with en-suite bathroom) with the master having a walk-in wardrobe and mood lighting.

The property also benefits from having wooden flooring, lift access, 24 hour concierge and a secure underground parking space. The property is offered UNFURNISHED and is available from early June.

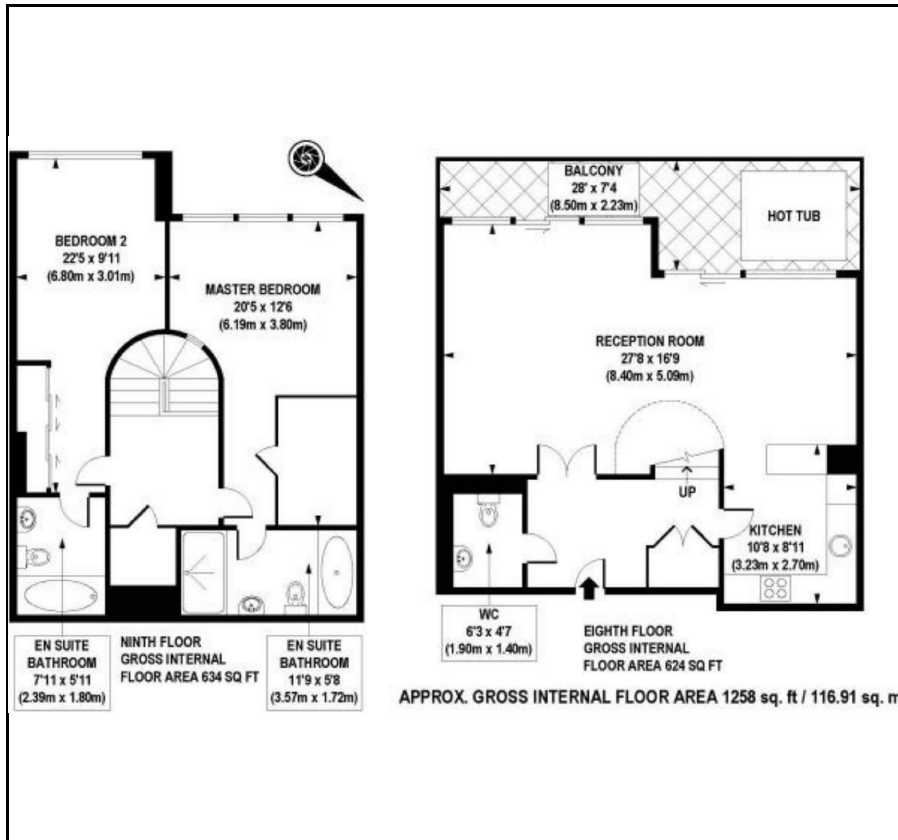
Viewing

Please contact our Messila Residential Office on 020 7586 6699 if you wish to arrange a viewing appointment for this property or require further information.

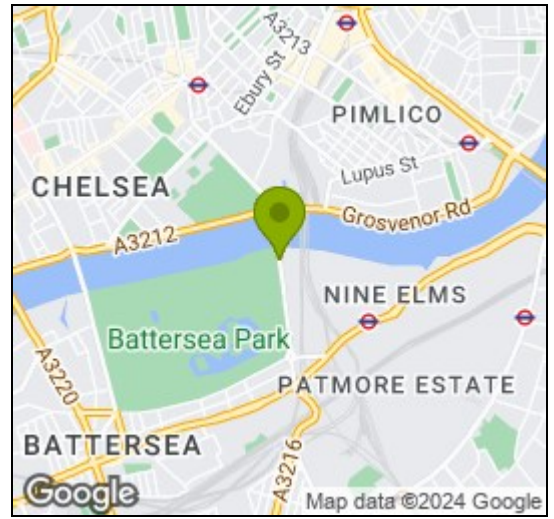
- Duplex Penthouse
- Two double bedrooms
- Two Ensuite Bathrooms
- Modern open plan kitchen
- Large entrance hall
- Guest cloakroom
- Private Terrace with view
- Reception/dining room
- Gated Underground Parking for one car



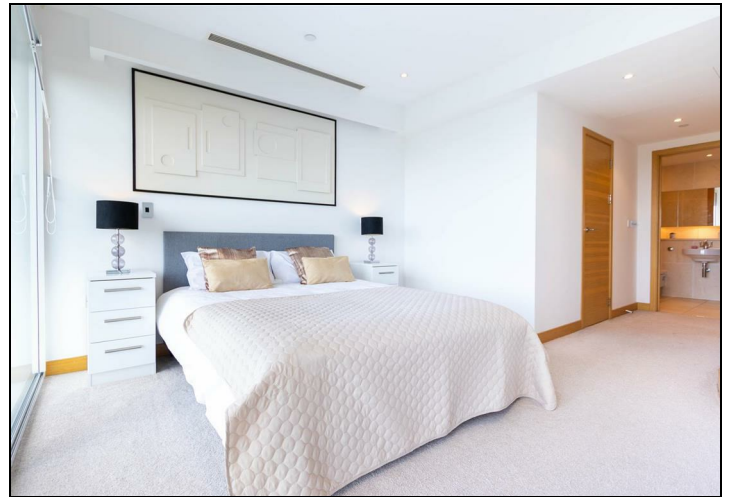
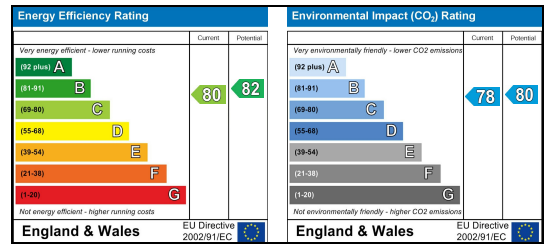
Floor Plan



Area Map



Energy Efficiency Graph



These particulars, whilst believed to be accurate are set out as a general outline only for guidance and do not constitute any part of an offer or contract. Intending purchasers should not rely on them as statements of representation of fact, but must satisfy themselves by inspection or otherwise as to their accuracy. No person in this firm's employment has the authority to make or give any representation or warranty in respect of the property.

Messila Residential

137 Park Road, London, NW8 7HT

T: 020 7586 6699 E: regentspark@messilaresidential.com W: messilaresidential.com