



## Hanover Gate Mansions

Park Road, Regents Park, NW1 4SN

£975 Per Week

\*\* This property is NOT suitable for students with the exception of London Business School \*\*\*

This is a well proportioned three double bedroom raised ground floor apartment located in a much sought after residential mansion building directly opposite Regent's Park and London Business School. The property has recently been redecorated throughout and benefits from having contemporary furnishings. The property comprises of:- Entrance hallway with plenty of storage, spacious reception room, separate kitchen, three double bedrooms (master with en-suite), second family bathroom. The property also benefits from having wooden flooring, porter, secure entry, high ceilings, within 10 mins walk of both Baker Street and St John's Wood Underground stations. The property is offered furnished and is available MID JUNE for long letting only. - suitable for 3 Sharers or a family - fully employed or LBS students and or family rental. NO PETS policy applicable.

### Viewing

Please contact our Messila Residential Office on 020 7586 6699 if you wish to arrange a viewing appointment for this property or require further information.

- Three Double Bedrooms
- Large reception room
- Two Bathrooms (1 E/s)
- Separate kitchen
- Raised Ground Floor
- Wooden Floor in principle rooms (carpets in bedrooms)
- Independent Gas heating
- Moments to Regents Park
- Baker Street tube nearby



3



2



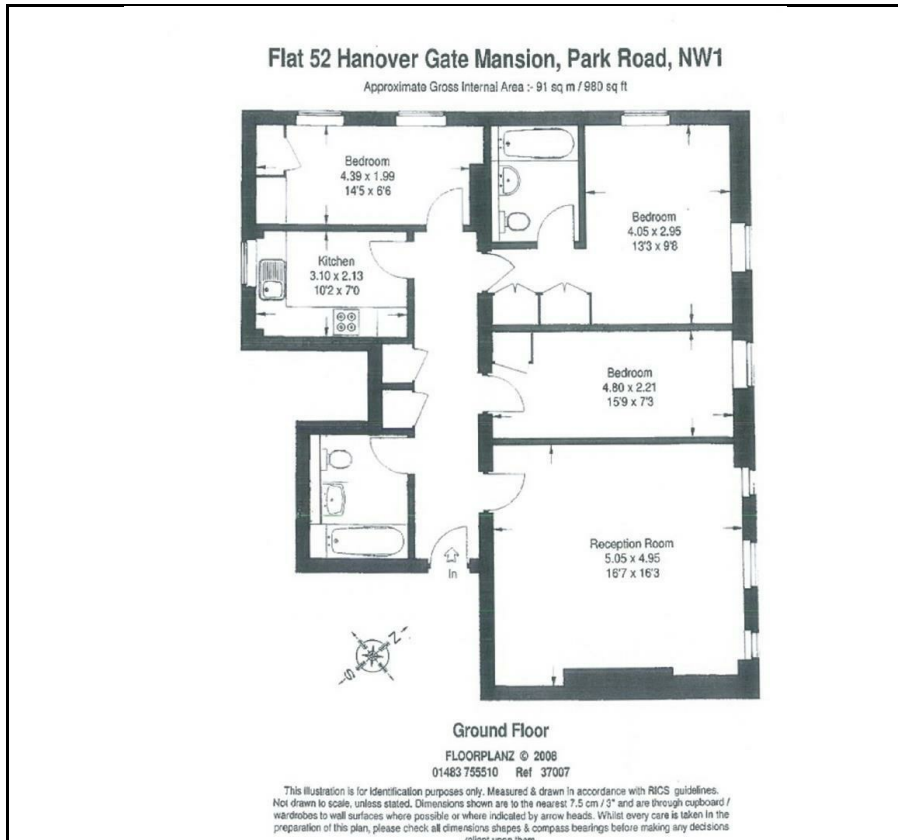
1



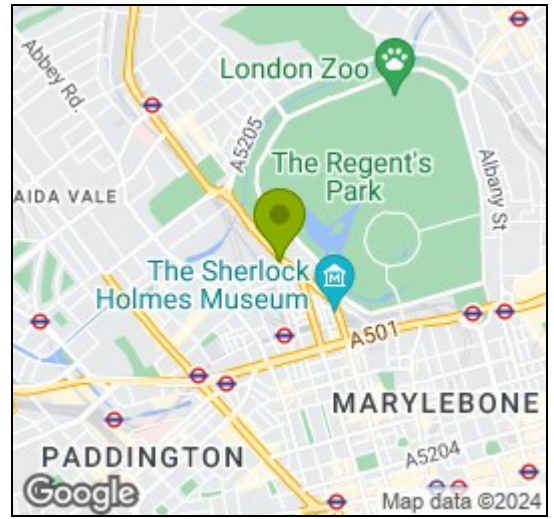
D



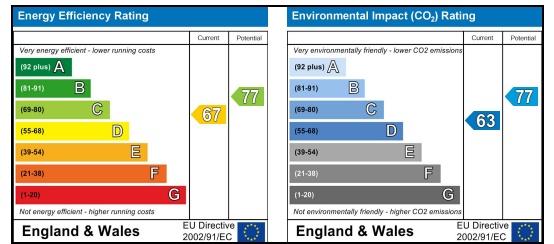
## Floor Plan



## Area Map



## Energy Efficiency Graph



These particulars, whilst believed to be accurate are set out as a general outline only for guidance and do not constitute any part of an offer or contract. Intending purchasers should not rely on them as statements of representation of fact, but must satisfy themselves by inspection or otherwise as to their accuracy. No person in this firm's employment has the authority to make or give any representation or warranty in respect of the property.

### Messila Residential

137 Park Road, London, NW8 7HT

T: 020 7586 6699 E: regentspark@messilaresidential.com W: messilaresidential.com