



Carlisle Mansions

Carlisle Place, London, SW1P 1HZ

£1,400 Per Week

A superb three Double bedroom apartment in a much sought after portered building, on a quiet residential street, minutes walk from Victoria Station.

This wonderfully spacious Raised Ground floor apartment comprises of:- Entrance Hallway with ample fitted storage space, beautiful double sized reception and dining room, separate breakfast kitchen, three large double bedrooms, master with en-suite bathroom/WC., second family shower/WC and additional guest WC. Walk-in large storage room.

This flat benefits from having extremely high ceilings throughout, gas central heating, secure video entry, daytime porter. This property was redecorated throughout and is offered unfurnished and available NOW for long let only (with break option).

- Three huge Double Bedrooms
- High Ceilings
- Unfurnished
- Newly redecorated
- Raised Ground Floor
- Daytime porter

Viewing

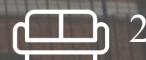
Please contact our Messila Residential Office on 020 7586 6699 if you wish to arrange a viewing appointment for this property or require further information.



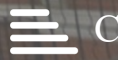
3



2

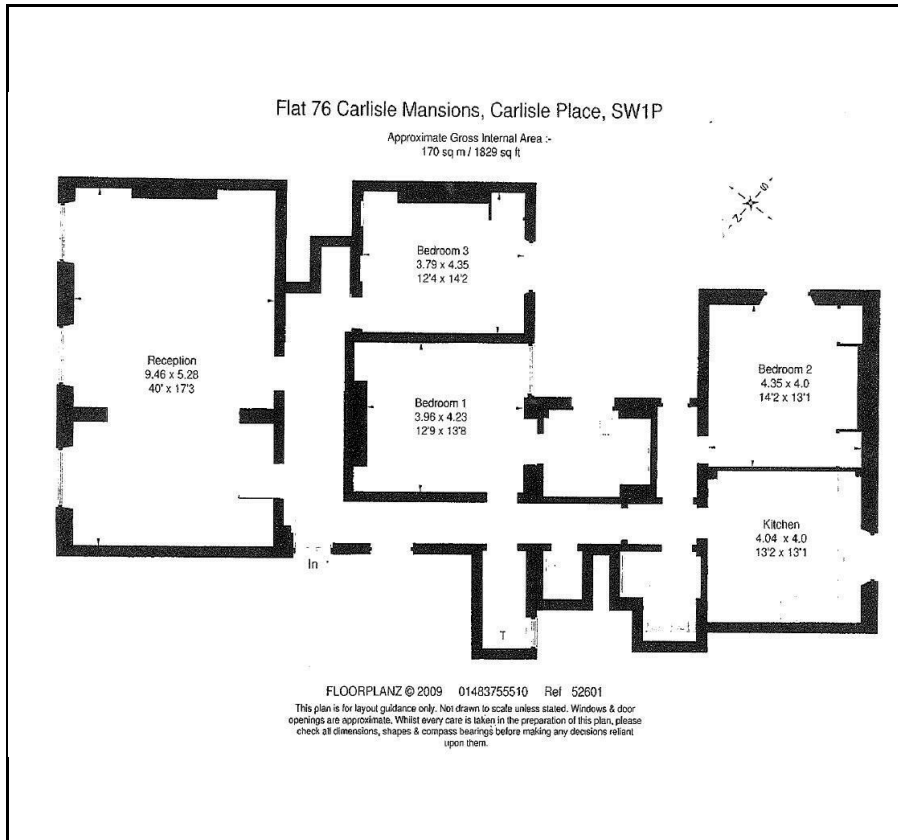


2



C

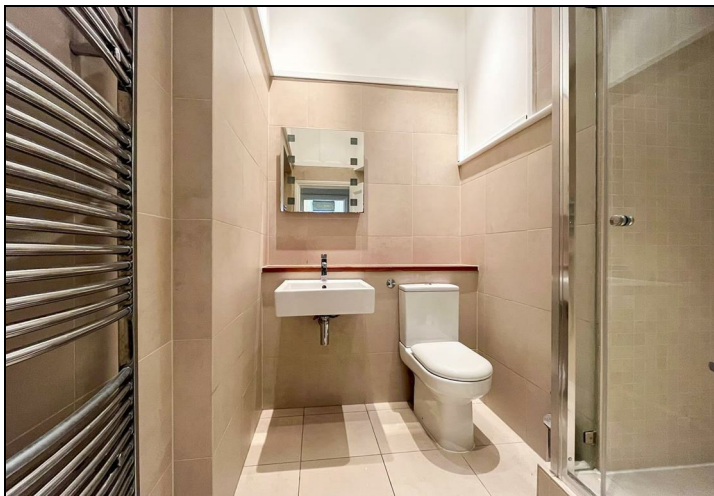
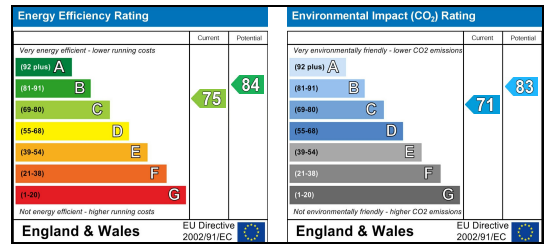
Floor Plan



Area Map



Energy Efficiency Graph



These particulars, whilst believed to be accurate are set out as a general outline only for guidance and do not constitute any part of an offer or contract. Intending purchasers should not rely on them as statements of representation of fact, but must satisfy themselves by inspection or otherwise as to their accuracy. No person in this firm's employment has the authority to make or give any representation or warranty in respect of the property.

Messila Residential

137 Park Road, London, NW8 7HT

T: 020 7586 6699 E: regentspark@messilaresidential.com W: messilaresidential.com