



Regent Court

North Bank, St John's Wood, NW8 8UN

£500 Per Week

A bright and spacious one double bedroom apartment on the first floor (with lift) of this popular residential building with 24 hours portorage.

The flat has a well fitted kitchen and tiled flooring throughout. The property comprises of:- Good sized reception room with open plan kitchen and large double door to balcony, fitted shower/WC, large bedroom with plenty of fitted wardrobes. Affording a private balcony, plenty of storage space and private allocated parking. Also use of a recently updated communal gym, cosy communal gardens. The property will be available from NOW for long let and is offered furnished.

An ideal flat for LBS student or young professional/couple.

- One Double Bedroom
- First Floor
- Balcony
- 24 Hour Porter
- Parking Included
- Communal gym and garden

Viewing

Please contact our Messila Residential Office on 020 7586 6699 if you wish to arrange a viewing appointment for this property or require further information.



1



1

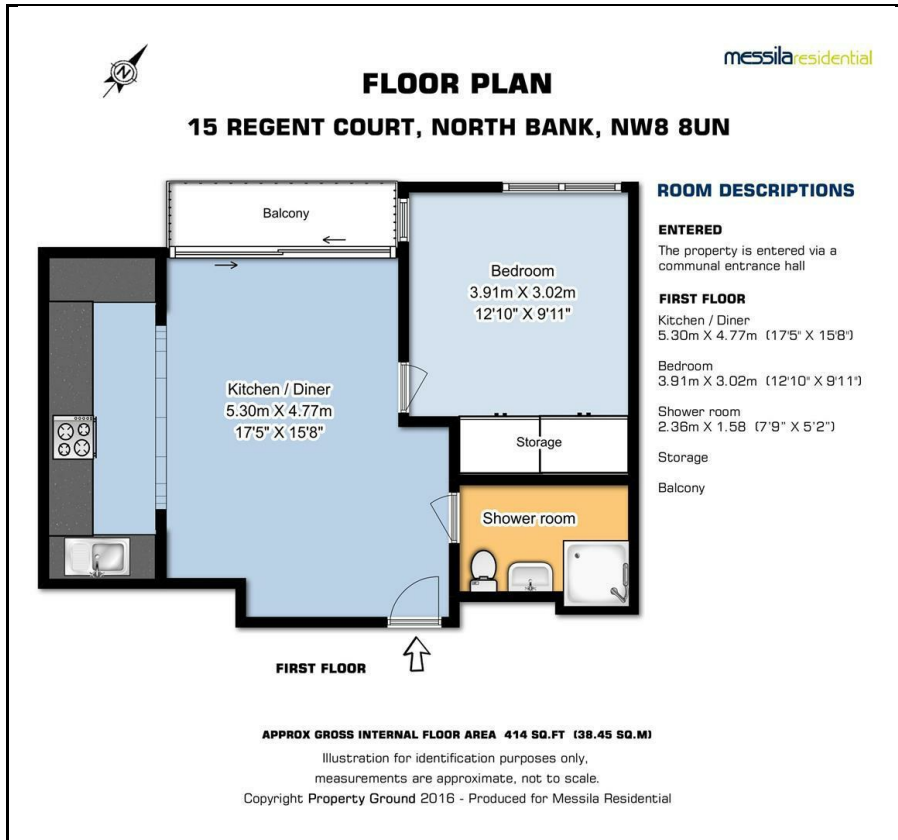


1

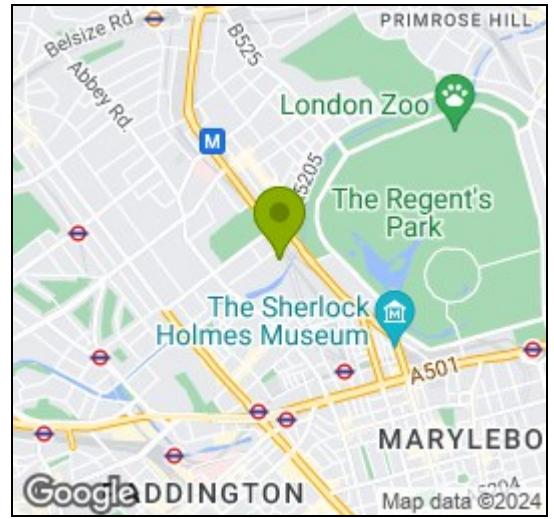


B

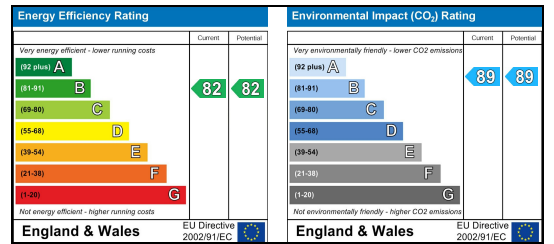
Floor Plan



Area Map



Energy Efficiency Graph



These particulars, whilst believed to be accurate are set out as a general outline only for guidance and do not constitute any part of an offer or contract. Intending purchasers should not rely on them as statements of representation of fact, but must satisfy themselves by inspection or otherwise as to their accuracy. No person in this firm's employment has the authority to make or give any representation or warranty in respect of the property.

Messila Residential

137 Park Road, London, NW8 7HT

T: 020 7586 6699 E: regentspark@messilaresidential.com W: messilaresidential.com