



Park Mansions

Knightsbridge, SW1X 7QT

£1,200 Per Week

A well presented bright three bedroom, two bathroom apartment on the fifth floor (with Lift) of a 24 hour portered residential block in the heart of Knightsbridge, moments from Harrods, Harvey Nichols and Sloane Street, with an array of wonderful shops at the door step.

This fine apartment has south and west facing windows with good natural light. Comprising: entrance hall with cupboards, reception room with bay window, dining area with bay window. Separate fitted kitchen, spacious master bedroom with ensuite bathroom/WC, two further double bedrooms and family shower/WC. Ample storage and wood flooring in all rooms. Affording brand new sitting and dining room furniture.

Both Hyde Park and Knightsbridge underground stations are just an easy walk away.

Offered Furnished and available NOW for 1 YEAR or longer (with break option).

- Three Double Bedrooms
- Two Bathrooms (1e/s)
- Separate Kitchen
- Communal heating & HW
- Heart of Knightsbridge
- Fifth Floor
- Lift & Porters

Viewing

Please contact our Messila Residential Office on 020 7586 6699 if you wish to arrange a viewing appointment for this property or require further information.



3



2

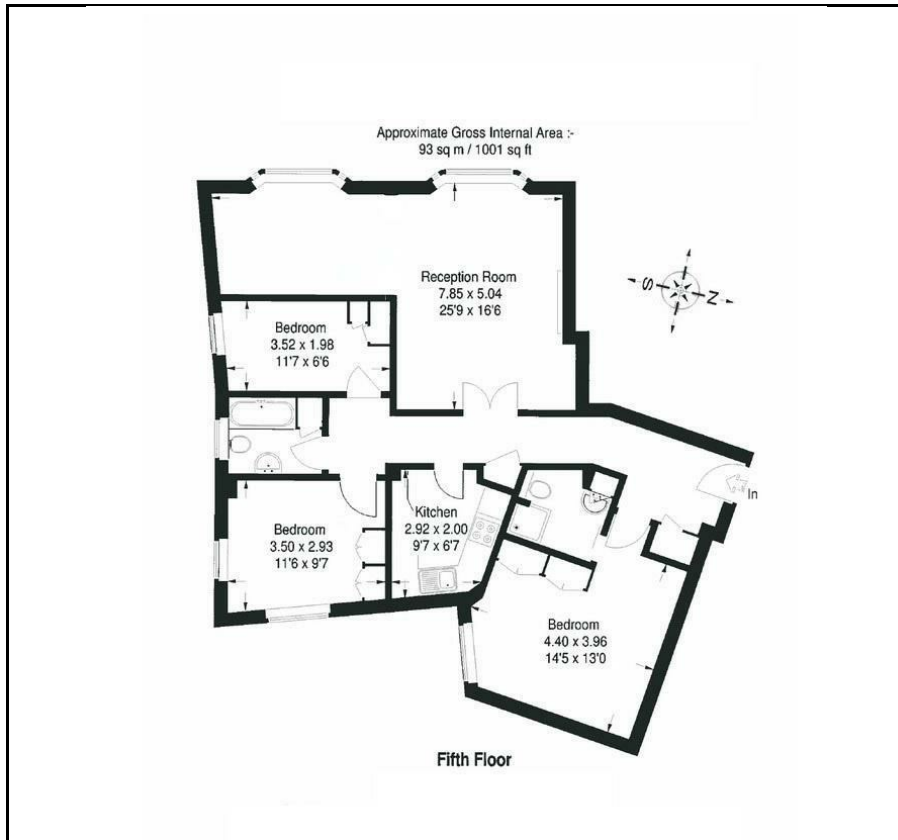


2



C

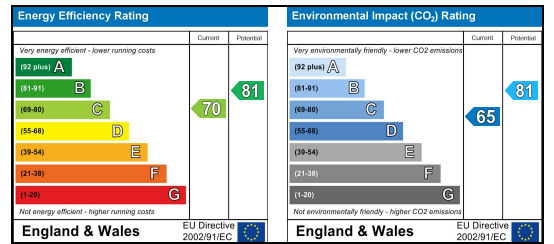
Floor Plan



Area Map



Energy Efficiency Graph



These particulars, whilst believed to be accurate are set out as a general outline only for guidance and do not constitute any part of an offer or contract. Intending purchasers should not rely on them as statements of representation of fact, but must satisfy themselves by inspection or otherwise as to their accuracy. No person in this firm's employment has the authority to make or give any representation or warranty in respect of the property.

Messila Residential

137 Park Road, London, NW8 7HT

T: 020 7586 6699 E: regentspark@messilaresidential.com W: messilaresidential.com