



## Capital Building

New Union Square, Nine Elms, SW11 7AE

£900 Per Week

A superb two double bedroom apartment located on the seventh floor of the 'Capital Building' which is situated within the famous 'Embassy Gardens' moments from the river Thames and the newly developed 'Battersea Power Station'.

The property comprises of: entrance hallway leading into a spacious open plan living room, with open plan integrated kitchen with breakfast/dining bar. Two wonderful double bedrooms, master having a large en-suite bathroom/WC, second shower/WC. The property also benefits from having comfort cooling throughout, wooden flooring, 24 hour concierge service, residents gym, stunning indoor/outdoor pool, The apartment is available end of MAY and is offered furnished for one year (with break option).

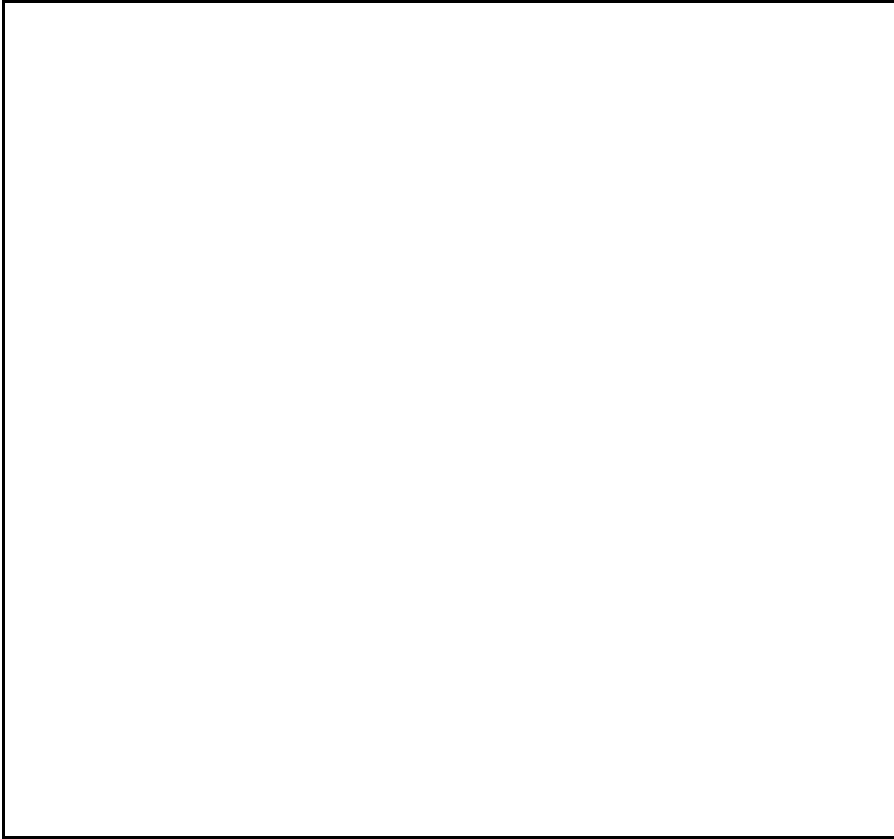
- Two Double Bedroom
- Two Bathrooms
- Seventh Floor
- Wooden Flooring
- Comfort Cooling
- Gym
- Indoor/outdoor Pool
- 24 Hour Concierge

### Viewing

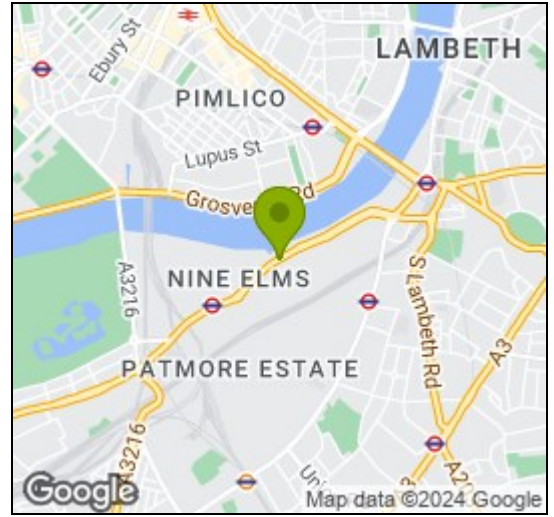
Please contact our Messila Residential Office on 020 7586 6699 if you wish to arrange a viewing appointment for this property or require further information.



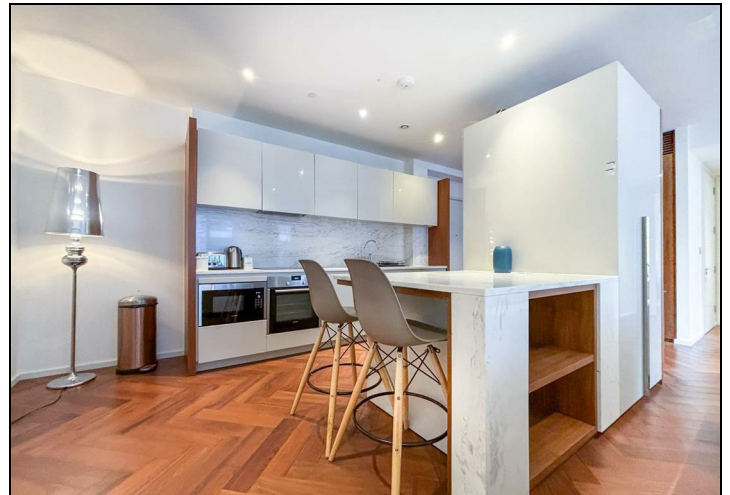
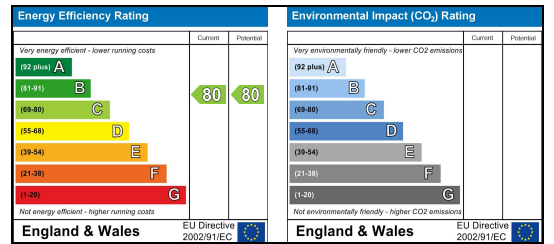
## Floor Plan



## Area Map



## Energy Efficiency Graph



These particulars, whilst believed to be accurate are set out as a general outline only for guidance and do not constitute any part of an offer or contract. Intending purchasers should not rely on them as statements of representation of fact, but must satisfy themselves by inspection or otherwise as to their accuracy. No person in this firm's employment has the authority to make or give any representation or warranty in respect of the property.

### Messila Residential

137 Park Road, London, NW8 7HT

T: 020 7586 6699 E: regentspark@messilaresidential.com W: messilaresidential.com