



## Tower Cottages

Portsmouth Road, Esher, KT10 9JH

£320 Per Week

A charming two bedroom cottage (BUNGALOW) with on site parking, set within the impressive grounds of 'Upper Court' on the edge of Esher in Surrey, with marvellous shops and restaurant/café's along the High Street as well as, Waitrose, which is just a short drive away.

The property comprises of:- Bright reception room with semi-open plan fitted kitchen, one double bedroom with second single bedroom / study, bathroom/WC with shower. Extensive communal grounds and FCFS parking. The property is offered unfurnished.

Available NOW for long let. Small pet may be considered.

- Newly furnished
- Charming Cottage
- Two Bedrooms
- Reception
- Kitchen
- Parking
- Use of Gardens

### Viewing

Please contact our Messila Residential Office on 020 7586 6699 if you wish to arrange a viewing appointment for this property or require further information.



2



1



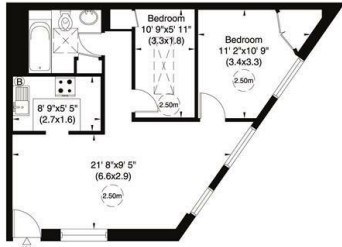
1



D

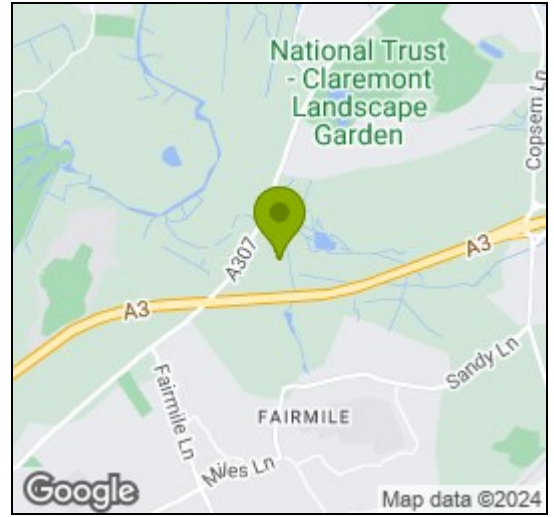
## Floor Plan

7 Tower Cottage Portsmouth Road, Esher Surrey, KT10 9JD  
 Gross internal area (approx.)  
 48 Sq m (515 Sq ft)  
 For identification only, Not to Scale  
 capital.020 8871 7722

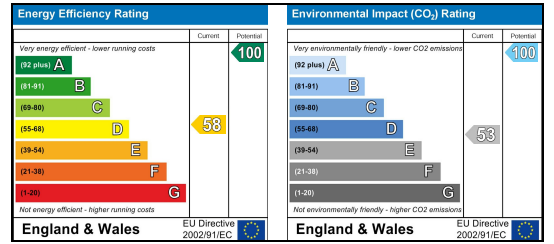


Ground Floor

## Area Map



## Energy Efficiency Graph



These particulars, whilst believed to be accurate are set out as a general outline only for guidance and do not constitute any part of an offer or contract. Intending purchasers should not rely on them as statements of representation of fact, but must satisfy themselves by inspection or otherwise as to their accuracy. No person in this firm's employment has the authority to make or give any representation or warranty in respect of the property.

### Messila Residential

137 Park Road, London, NW8 7HT

T: 020 7586 6699 E regentspark@messilaresidential.com W: messilaresidential.com