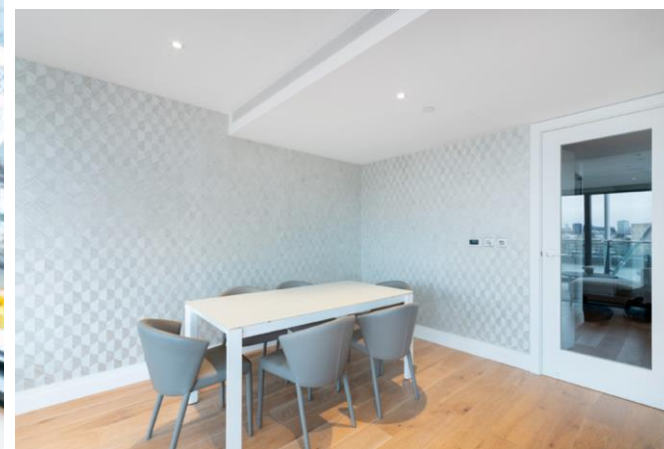




To Let
5 Riverlight Quay
London, SW11 8DX

PROPERTY SUMMARY

A three bedroom apartment in the prestigious Riverlight development with direct river views and a westerly aspect. On-site residents facilities include benefit a gymnasium, swimming pool and holistic spa, library, virtual golf and a private cinema.

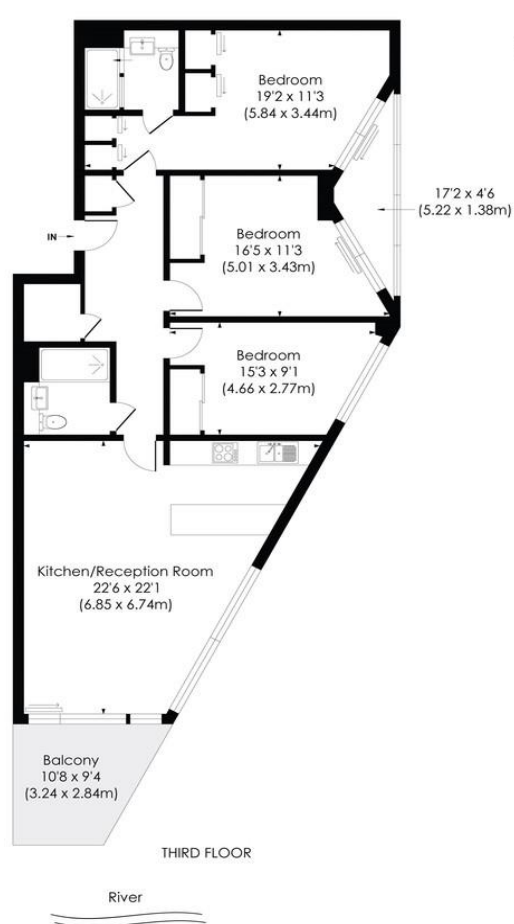




KIRTLING STREET, SW11

Approx. Gross Internal Floor Area

1156 Sq. ft/107.37 Sq. m



© Pixangle Property Marketing Ltd. info@pixangle.com Tel: 0208 870 2118

pixangle
PROPERTY MARKETING

This floor plan has been prepared for the purpose of illustration only in accordance with the latest RICS code of measuring practice and is not to scale. All measurements and areas are approximate and whilst every effort has been made to ensure the accuracy of the plan contained here, no responsibility is taken for any error, omission or misstatement.

LOCAL AUTHORITY

Wandsworth Borough Council

COUNCIL TAX BAND

Band G

VIEWINGS

By prior appointment only

| 10/12/2020 | | Energy performance of buildings register | |
|------------|---------------|--|-----------|
| Score | Energy rating | Current | Potential |
| 92+ | A | | |
| 81-91 | B | 87 B | 87 B |
| 69-80 | C | | |
| 55-68 | D | | |
| 39-54 | E | | |
| 21-38 | F | | |
| 1-20 | G | | |

Agents Note: Whilst every care has been taken to prepare these particulars, they are for guidance purposes only. All measurements are approximate and are for general guidance purposes only and whilst every care has been taken to ensure their accuracy, they should not be relied upon and potential buyers/tenants are advised to recheck the measurements



4 Vicentia Court
Bridges Wharf
London
SW11 3GY

02073522455
info@hgproperty.co.uk
www.hgproperty.co.uk