

H  
G

## Liberty House, Juniper Drive

London, SW18 1QZ



## PROPERTY SUMMARY

Discover luxury riverside living with this stylish one-bedroom apartment in Liberty House, part of the prestigious Battersea Reach development. This beautifully presented home features a bright and spacious open-plan living area with floor-to-ceiling windows, offering plenty of natural light and stunning views. The sleek, fully fitted kitchen boasts high-end appliances, while the generously sized bedroom for ample storage. A contemporary bathroom completes the elegant interior.

1



1

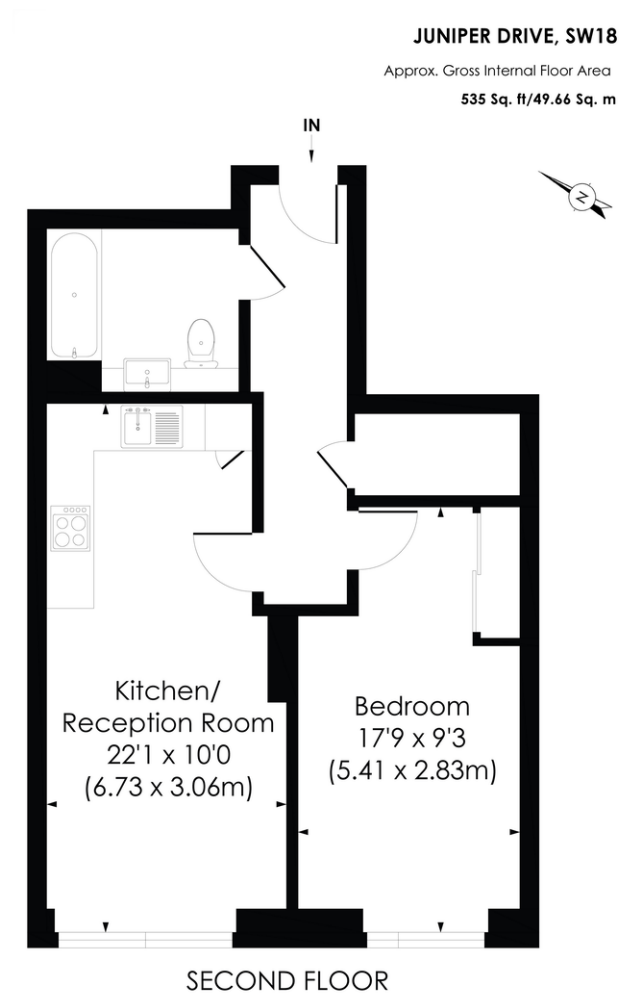


1









**LOCAL AUTHORITY**  
 Wandsworth Borough Council

**TENURE**  
 Leasehold

**COUNCIL TAX BAND**  
 Band E

**VIEWINGS**  
 By prior appointment only

Score	Energy rating	Current	Potential
92+	A		
81-91	B	85 B	85 B
69-80	C		
55-68	D		
39-54	E		
21-38	F		
1-20	G		

Agents Note: Whilst every care has been taken to prepare these particulars, they are for guidance purposes only. All measurements are approximate and are for general guidance purposes only and whilst every care has been taken to ensure their accuracy, they should not be relied upon and potential buyers/tenants are advised to recheck the measurements

© Pixangle Property Marketing Ltd. Info@pixangle.com Tel: 0208 870 2118  
 This floor plan has been prepared for the purpose of illustration only in accordance with the latest RICS code of measuring practice and is not to scale. All measurements and areas are approximate and whilst every effort has been made to ensure the accuracy of the plan contained here, no responsibility is taken for any error, omission or misstatement.



4 Vicentia Court  
 Bridges Wharf  
 London  
 SW11 3GY

02073522455  
 info@hgproperty.co.uk  
 www.hgproperty.co.uk